

# CONTRACT 5009 WATER TREATMENT PLANT GENIUS BUS REPLACEMENT PROJECT

## ADDENDUM NO. 2

**ALL PROSPECTIVE BIDDERS** are hereby notified that changes to the bidding documents for Contract 5009; WATER TREATMENT PLANT GENIUS BUS REPLACEMENT PROJECT are to be made to the Contract Documents. The additions and/or deletions contained in this Addendum shall be made part of the plans and specifications, Special Provisions, and contract documents for the above-described project, and shall be subject to all applicable requirements thereunder, as if originally shown and/or specified. The changes and clarifications (additions shown in underline, removals shown in strikeout) are as follows:

### 1. QUESTIONS

- a. The City has received the following questions and responses are below:
  - a. Is there a bid sheet and scope of work for this project?
    - i. *Response: Contractor shall review the bidding documents that have been issued including Addendum1. The bidding documents can be found at <https://www.pittsburgca.gov/business/current-bidding-opportunities>.*
  - b. What size and quantity of conduits are required for the underground build?
    - i. *Response: 2-2 inch conduits for the Fiber runs and 1-2 inch conduit for the ethernet cable runs.*
  - c. Do you want pricing for all 4 options shown on the 'Boring Option' PDF?
    - i. *Response: No, Contractor shall price out for Option 1 only.*
  - d. Will any new vaults/handholes be required? If yes, please specify size, quantity and location.
    - i. *Response: Contractor shall assume 2 – 3'x4' precast communications vault. Approximate Locations shown on the attached documents*
  - e. Does the scope of work include repairing existing damaged conduit?
    - i. *Response: Contractor shall assume 50% of existing conduit is damaged. However, in lieu of repairing the contractor can choose to install new for constructability at no additional cost to the project.*
  - f. What's the required length for the 12F multimode fiber? And do you have a recommended manufacturer spec or part no. for the fiber?

i. Response: Lengths shall be as shown on the bid schedule and plans. No recommendations for the type of fiber cable.

g. Does the scope of work include any splicing or testing?

i. Response: Yes the scope shall include splicing and testing of the installation.

**2. BID DEADLINE**

a. Bids are due to the City Clerks office on Friday September 1<sup>st</sup> at 2:00 p.m.

**3. PLANS/SPECIFICATIONS**


a. Please be advised of the following addition to the contract documents:

- i. Boring Option 5009
- ii. Fiber optic Cables 5009
- iii. Option 1 Drawing From Staff 5009
- iv. Project 5009 Memo to Contractors 5009
- v. SCHEDULE OF BID PRICES 5009
- vi. Schematic Of Utilities 5009

**BIDDERS MUST SIGN AND ATTACH** one (1) copy of this addendum document to the proposal as acknowledgment of receipt of these instructions and that said addendum was properly evaluated in the proposal.

**ANY PROPOSAL NOT IN COMPLIANCE WITH THIS ADDENDUM MAY BE REJECTED.**

Issued: 8/30/23

  
\_\_\_\_\_  
Dayne Johnson, P.E.  
Assistant City Engineer

Addendum No. 1, Contract 5009; WATER TREATMENT PLANT GENIUS BUS REPLACEMENT PROJECT is hereby acknowledged and was considered in this Contract Proposal.

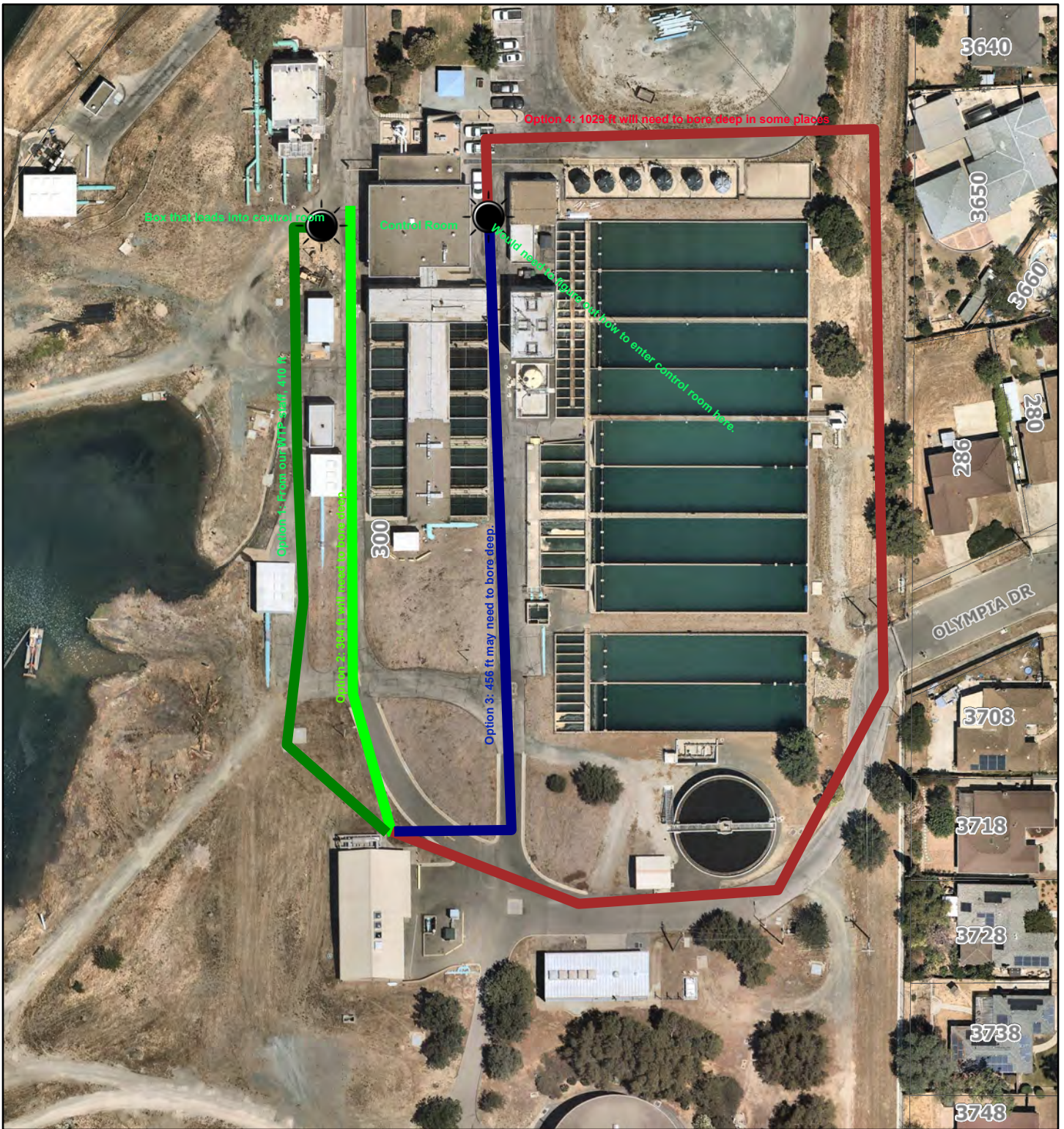
\_\_\_\_\_  
Bidder's Signature

\_\_\_\_\_  
Date

\_\_\_\_\_  
Firm Name

\_\_\_\_\_  
Mailing Address

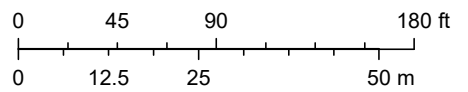
# Boring Options



7/28/2023, 2:41:04 PM

1:1,328

- City Limits
- Parcel



Copyright nearmap 2015, Esri, HERE, Garmin, IPC, Maxar

Disclaimer: All reasonable effort has been made to assure the accuracy of the maps for its intended purpose.



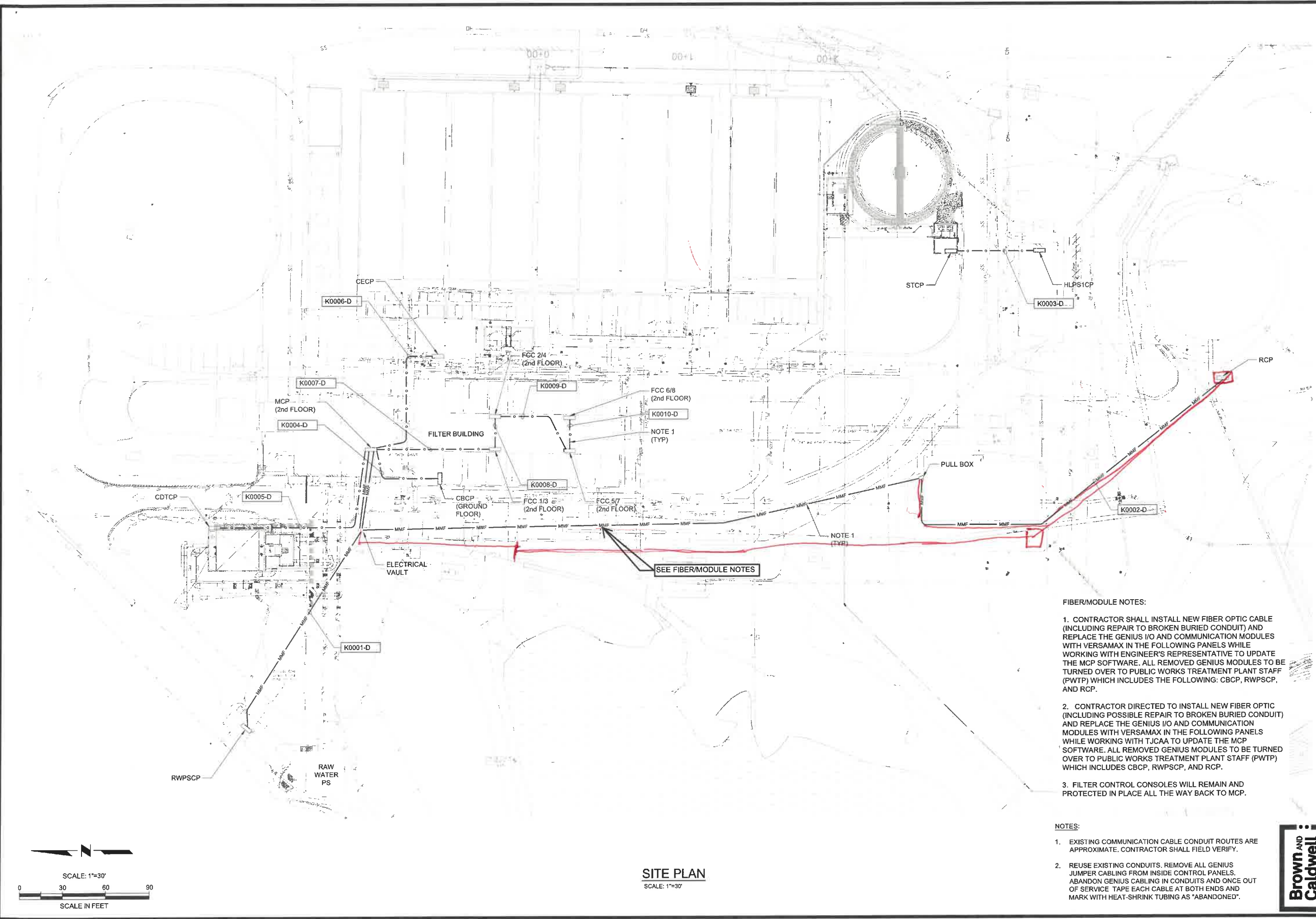
THIS BAR SCALES EXACTLY ONE INCH AT FULL SCALE

PITTSBURGH WATER TREATMENT PLANT  
 GENIUS BUS REPLACEMENT PROJECT  
**ELECTRICAL  
 SITE PLAN**

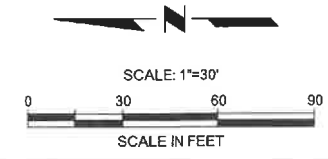
DESIGNED BY: ADR  
 DRAWN BY: BY  
 CHECKED BY: MJE  
 SCALE: 1"=30'  
 DATE: JAN 2023



REV.	DATE	BY	COMMENT



**SITE PLAN**  
 SCALE: 1"=30'



- FIBER/MODULE NOTES:**
1. CONTRACTOR SHALL INSTALL NEW FIBER OPTIC CABLE (INCLUDING REPAIR TO BROKEN BURIED CONDUIT) AND REPLACE THE GENIUS I/O AND COMMUNICATION MODULES WITH VERSAMAX IN THE FOLLOWING PANELS WHILE WORKING WITH ENGINEER'S REPRESENTATIVE TO UPDATE THE MCP SOFTWARE. ALL REMOVED GENIUS MODULES TO BE TURNED OVER TO PUBLIC WORKS TREATMENT PLANT STAFF (PWTP) WHICH INCLUDES THE FOLLOWING: CBCP, RWSPCP, AND RCP.
  2. CONTRACTOR DIRECTED TO INSTALL NEW FIBER OPTIC (INCLUDING POSSIBLE REPAIR TO BROKEN BURIED CONDUIT) AND REPLACE THE GENIUS I/O AND COMMUNICATION MODULES WITH VERSAMAX IN THE FOLLOWING PANELS WHILE WORKING WITH TJCAA TO UPDATE THE MCP SOFTWARE. ALL REMOVED GENIUS MODULES TO BE TURNED OVER TO PUBLIC WORKS TREATMENT PLANT STAFF (PWTP) WHICH INCLUDES CBCP, RWSPCP, AND RCP.
  3. FILTER CONTROL CONSOLES WILL REMAIN AND PROTECTED IN PLACE ALL THE WAY BACK TO MCP.

- NOTES:**
1. EXISTING COMMUNICATION CABLE CONDUIT ROUTES ARE APPROXIMATE. CONTRACTOR SHALL FIELD VERIFY.
  2. REUSE EXISTING CONDUITS. REMOVE ALL GENIUS JUMPER CABLING FROM INSIDE CONTROL PANELS. ABANDON GENIUS CABLING IN CONDUITS AND ONCE OUT OF SERVICE TAPE EACH CABLE AT BOTH ENDS AND MARK WITH HEAT-SHRINK TUBING AS 'ABANDONED'.





# City of Pittsburg

Public Works Department

Engineering Division

65 Civic Avenue

Pittsburg, CA 94565-3814

Phone: (925) 252-4930 Fax: (925) 252-4814

Hello,

The City of Pittsburg is requesting quotes for the base bid (the optic fiber work only) and on the bid add alternates for the remaining work that was removed from the original scope of this project. We will accept bids on just the base bid or bids for both the base bid plus the bid add alternates. The bids will be evaluated and the best option for the City will be chosen.

Thank you,

Andrew Peters, Assistant Engineer

## SCHEDULE OF BID PRICES

All bid items; including lump sums, unit prices, and deductive alternates must be filled in completely in numerals.

### BASE BID

BID ITEM NO.	ITEM DESCRIPTION	EST. QTY.	UNIT	UNIT COST	EXTENDED TOTAL AMOUNT
1	Fiber Optic Cabling	1000	LF	\$	\$
2	Fiber Optic Terminations	32	EA	\$	\$

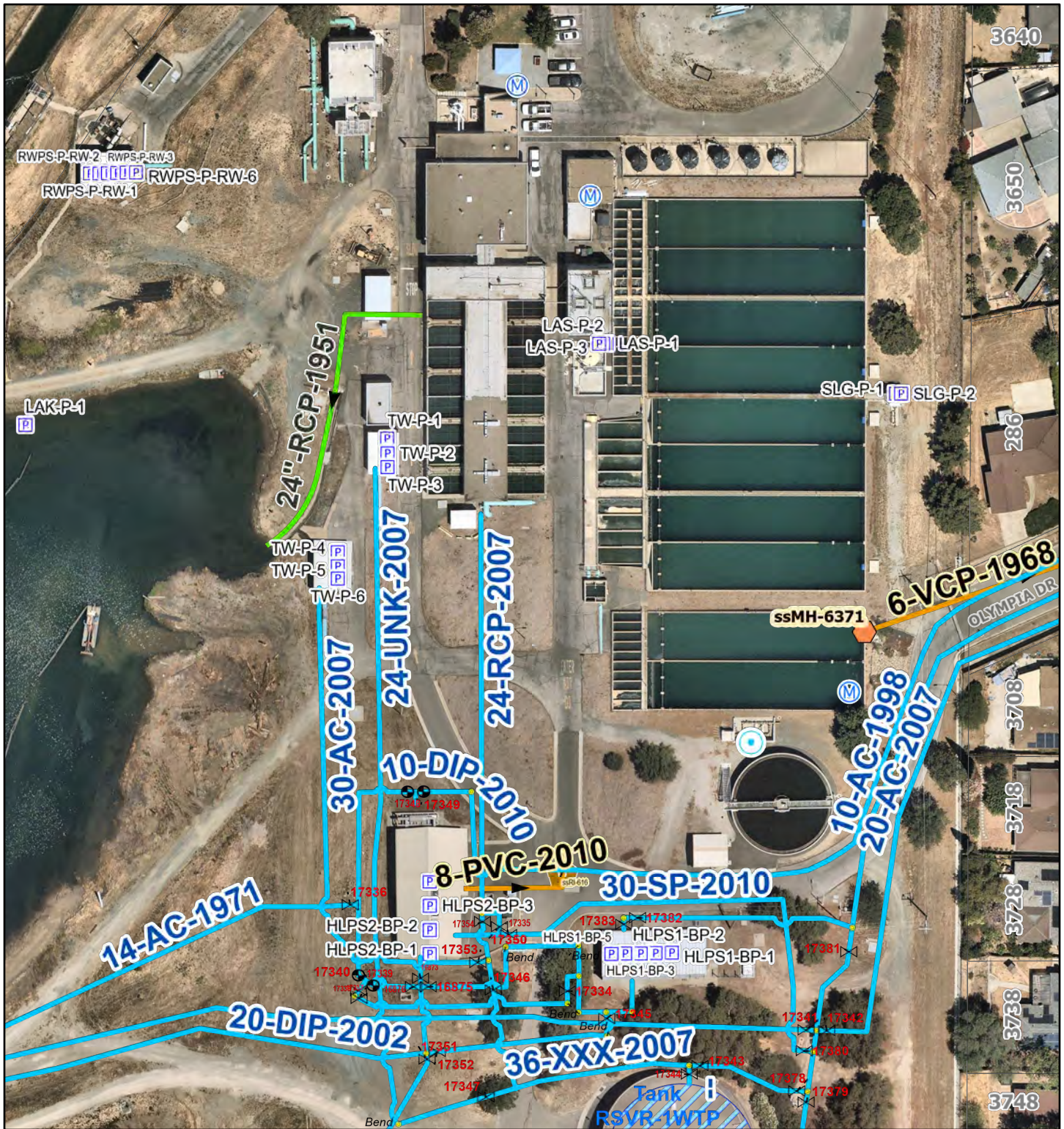
### BID ADD ALTERNATE

BID ITEM NO.	ITEM DESCRIPTION	EST. QTY.	UNIT	UNIT COST	EXTENDED TOTAL AMOUNT
1	Submittals & Coordination	1	LS	\$	\$
2	Ethernet Cabling	2000	LF	\$	\$
3	Panel Enclosures/Components	1	LS	\$	\$
4	Control Panel Sub-Assembly	1	LS	\$	\$
5	On Site Panel Modifications	1	LS	\$	\$
6	Spare Parts	1	LS	\$	\$
7	Conduit Repair	500	LF	\$	\$
8	Ethernet Cable Terminations	20	EA	\$	\$

Bidder Name:

---

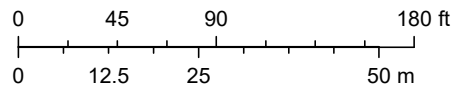
# Schematic Of Utilities (Not all utilities are show)



7/28/2023, 1:52:21 PM

1:1,328

- |                   |                      |                   |
|-------------------|----------------------|-------------------|
| Storm Mains       | Catch Basin Labels   | Sewer Main Labels |
| Storm Main Labels | Sewer Manholes       | Sewer MH Labels   |
| Manholes          | Rodding Inlets       | Pumps             |
| Manhole Labels    | Rodding Inlet        | Tanks             |
| Catch Basins      | Rodding Inlet Labels | Monitoring Wells  |
|                   | Sewer Mains          |                   |



Copyright nearmap 2015, PW and Engineering, Esri, HERE, Garmin, iPC, Maxar

Disclaimer: All reasonable effort has been made to assure the accuracy of the maps for its intended purpose.