

**“PROJECT NO. 2241
EAST LELAND ROAD PAVEMENT MAINTENANCE**

ADDENDUM NO. 1

This addendum consists of twenty (20) pages, amending the Contract Documents. All prospective bidders for the above-referenced project are to be aware that the following changes, additions and/or clarifications shall be included as an integral part of the Contract Documents for the above-referenced project, and that they are bounded by all conditions set forth therein.

ALL PROSPECTIVE BIDDERS are hereby notified that changes to the bidding documents for PROJECT NO. 2241; EAST LELAND ROAD PAVEMENT MAINTENANCE are to be made as described hereinafter:

ITEM 1 – ADDITIONAL BID ITEMS

- Bid Item 24 “18” (inch) RCP Replacement”. See attached updated Bid Schedule, Section 01 22 00 Unit Prices, and Exhibit 1 - 18” (inch) RCP Replacement, replacement of the existing catch basin, steel frame and grate, and removal and replacement of the existing storm drain manhole cover”.
- Bid Item 25 “Concrete Curb and Gutter”.
See attached updated Bid Schedule and Section 01 22 00 Unit Prices.
- Bid Item 26 “Concrete Sidewalk Replacement”.
See attached updated Bid Schedule and Section 01 22 00 Unit Prices.
- Bid Item 27 “Asphalt Plug”.
See attached updated Bid Schedule and Section 01 22 00 Unit Prices.

ITEM 2 – BID ITEM ADJUSTMENT

- Bid Item 23 “ADA Curb Ramp” (Each) in Specification Section 01 22 00, includes work associated with the ramp, level landing, truncated domes, curb, gutter and flares according to the details referenced in the plans. The contractor is to assume the approximate square footage per each ramp is 100 SF.

ITEM 3 – BID ITEM ADJUSTMENT

- Bid Item 7 ‘Base Repair (Revokable)’ on Section 01 22 00 – 4, no. 3, of the ‘Unit Prices’ specifications. The following has been revised as stated: “Base Repair shall be to the depth of two (2) inches after the two (2) inch

mill has been performed. Pavement fabric/mat shall be Tensar Glaspave 50 (GP-50) as shown in the attached cut sheet. Pavement fabric/mat shall be placed between the existing asphalt surface and new HMA. HMA shall be placed in lifts not to exceed three (3) inches.” See attached updated Specification Section 01 22 00 ‘Unit Prices.’

ITEM 4 – SPECIFICATIONS SECTION 32 12 16 - ASPHALT PAVING

- Section 32 12 16 – 6, 2.1, addition to ‘Aggregate Materials’. The revision states as follows: The aggregate used for micro-surfacing shall be Type II. The aggregate shall be 100% crushed with no rounded particles, volcanic in origin and black in color (Black Rock Only). The use of gray or light-colored aggregate shall not be allowed. The Contractor shall specify in the bid proposal the name and location of the black rock aggregate quarry and shall provide certification at the preconstruction conference that the rock was crushed a minimum of 90 days prior. The Contractor shall submit samples of the black rock aggregate to the Engineer for review and acceptance. Aggregate, prior to the addition of Micro Surfacing Emulsion, shall conform to the provisions and these Technical Specifications.

ITEM 5 – DRAWING REVISION: SHEETS I-3, EXH-1, EXH-2

- See attached revised sheet I-3 and Exhibit 1 - “18” (inch) RCP Replacement”.

ITEM 6 – CLARIFICATIONS

- Clarification to provide additional information for Bid Item 19 ‘Adjust Existing Facilities to Grade’ on page 11 of the Project Specifications. Specific type of facility and numbers of each are as follows: seventeen (17) manholes, thirty-six (36) water valves, three (3) monuments, two (2) PG&E vaults, one (1) PG&E box.

ITEM 7 – BID OPENING

- The bid opening date has been changed to August 4, 2023, at 1:00 PM

BIDDERS MUST SIGN AND ATTACH one (1) copy of this addendum document to the bid proposal as acknowledgment of receipt of these instructions and that said addendum was properly evaluated in the proposal.

ANY PROPOSAL NOT IN COMPLIANCE WITH THIS ADDENDUM MAY BE REJECTED.

Issued: 7/27/23

Dayle Johnson ACE for John Samuelson.
John Samuelson, City Engineer

Addendum No. 1, Contract No. 2241; City Council Chambers Upgrade is hereby acknowledged and was considered in this Contract Proposal.

Bidder's Signature

Date

Firm Name

Mailing Address

City/State/Zip+4

Bid Schedule

This Bid Schedule must be completed in ink and included with the sealed Bid Proposal. Pricing must be provided for each Bid Item as indicated. Items marked "(SW)" are Specialty Work that must be performed by a qualified Subcontractor. The lump sum or unit cost for each item must be inclusive of all costs, whether direct or indirect, including profit and overhead. The sum of all amounts entered in the "Extended Total Amount" column must be identical to the Base Bid price entered in Section 1 of the Bid Proposal form.

AL = Allowance CF = Cubic Feet SY = Square Yard EA = Each LB = Pounds
 LF = Linear Foot LS = Lump Sum SF = Square Feet TON = Ton (2000 lbs)

BID ITEM NO.	ITEM DESCRIPTION	EST. QTY.	UNIT	UNIT COST	EXTENDED TOTAL AMOUNT
1	Mobilization	1	LS	\$	\$
2	Traffic Control	1	LS	\$	\$
3	Construction Area Signage	8	EA	\$	\$
4	Sediment & Erosion Control	1	LS	\$	\$
5	2" Mill	399,800	SF	\$	\$
6	2" HMA Overlay	4,998	TON	\$	\$
7	Base Repair (Revokable)	9,000	SF	\$	\$
8	Micro-surfacing	340,280	SF	\$	\$
9	Traffic Striping Detail 9	20,803	LF	\$	\$
10	Traffic Striping Detail 25A	386	LF	\$	\$
11	Traffic Striping Detail 26	18,444	LF	\$	\$
12	Traffic Striping Detail 38	4,022	LF	\$	\$
13	Traffic Striping Detail 39	18,292	LF	\$	\$
14	Traffic Striping Detail 39A	2,682	LF	\$	\$
15	Thermoplastic 12" White (Limit Lines/Crosswalks)	2,309	LF	\$	\$
16	Thermoplastic 12" Yellow (Limit Lines/Crosswalks)	780	LF	\$	\$
17	Pavement Markings	1,652	SF	\$	\$
18	Blue Fire Hydrant Markers	24	EA	\$	\$
19	Adjust Existing Facilities to Grade	59	EA	\$	\$
20	Traffic Signal Loop Detectors	159	EA	\$	\$
21	Median Demo	1	LS	\$	\$
22	Concrete Curb	11	LF	\$	\$
23	ADA Curb Ramps	28	EA	\$	\$
24	18" RCP	1	LS	\$	\$

BID ITEM NO.	ITEM DESCRIPTION	EST. QTY.	UNIT	UNIT COST	EXTENDED TOTAL AMOUNT
25	Concrete Curb and Gutter	580	LF	\$	\$
26	Concrete Sidewalk Replacement	3660	SF	\$	\$
27	Asphalt Plug	2100	SF	\$	\$

* Final Pay Quantity

TOTAL BASE BID: Items 1 through _____ inclusive: \$ _____

Note: The amount entered as the "Total Base Bid" should be identical to the Base Bid amount entered in Section 1 of the Bid Proposal form.

BIDDER NAME: _____

END OF BID SCHEDULE

SECTION 01 22 00 –UNIT PRICES

GENERAL

1.1 SUMMARY

- A. This Section specifies procedures and requirements for measurement and payment for unit price items listed on the Bid Form for each unit of work described herein.
- B. Refer to the Instruction to Bidders and Division 00 General Conditions and Division 00 Article 8 – Payment for related requirements pertaining to change orders, payments and unit prices.
- C. Prices:
 - 1. In addition to Base Bid, Bidder shall quote unit prices, in appropriate spaces on Bid Form for each unit of work as described herein. Change Orders will be based on unit prices quoted on Bid Form for applicable work.
 - 2. In event any unit price quoted appears to compare unfavorably with currently established prices for type of work, City reserves the right to require quoted price to be substantiated or adjusted prior to execution of contract.
 - 3. Unit prices listed on the Bid Form for the following items shall constitute full and complete compensation for each unit, and shall include cost of temporary and administrative work, permits, bonds, insurance, sales taxes, overhead, profit and every other expense, direct or indirect, incident to accomplishment of work under each item.

PRODUCTS

NOT USED

EXECUTION

1.2 MEASUREMENT

- A. Measurement of quantities for payment will be made or determined by City's Inspector.
 - 1. Volume of any material shall be based on information included with Drawings and additional measurements obtained by Inspector, or by combination of such information, or in a manner which, in the opinion of the Inspector, is best suited to obtain necessary accuracy.

2. In case of unit prices based upon weight measurement, certified weight tickets shall be supplied at time of delivery of materials.
3. Excess materials delivered to the site, but not incorporated in the work, will not be paid for.

1.3 UNIT PRICE ITEMS

A. Bid Item 1: Mobilization:

1. The Basis of Measurement: Measurement will be made as a percentage of the costs incurred according to the list submitted except that not more than 75% of the bid price shall be paid prior to the final estimate for payment being due, said remaining 25% paid upon completion of cleanup and removal with final payment.
2. Basis of Payment: The contract lump sum price paid for "Mobilization" shall include full compensation for furnishing all labor, materials, tools, equipment, and incidentals and for doing all the work involved in mobilization and demobilization, including, but not limited to, furnishing all specified contract bonds and insurance certificates, public notification, submittals, transporting equipment, sanitary restroom facilities and all other work as specified in the Standard Specifications, these Technical Specifications, and as directed by the Engineer.
3. Mobilization bid price shall not exceed 10 percent of the total bid price for payment purposes.

B. Bid Item 2: Traffic Control

1. The Basis of Measurement: Measurement will be made as a percentage of the costs incurred according to the list submitted except that not more than 75% of the bid price shall be paid prior to the final estimate for payment being due, said remaining 25% shall be paid upon completion of cleanup and removal with final payment.
2. Basis of Payment: The contract lump sum price paid for "Traffic Control" shall include full compensation for furnishing all labor (including a Traffic Control Plan for Pedestrians, vehicles and bicycles, and flaggers when necessary), materials (including signage, message boards, barricades, longitudinal channelizing devices, temporary ramps, cones, door hangers), tools, equipment, and incidentals and for doing all the work involved in traffic control including, but not limited to, notifications, placing, removing, storing, maintaining, moving to new locations, replacing, disposing, traffic control plans, lane closures, detours, signage, flaggers and all work necessary to provide for the convenience & safety of the public and to facilitate the performance of the contract work for the life of the project as shown on the plans, as specified in the Standard Specifications and these special provisions, and as directed by the Engineer.

3. This bid item should include traffic control for all aspects of work on E. Leland Road.

C. Bid Item 3: Construction Area Signage

1. Basis of Measurement and Payment: The contract price paid per each for "Construction Area Signage" shall include full compensation for furnishing all labor, materials, tools, equipment, and incidentals and for doing all the work involved in construction area signs, complete in place, including placing, maintaining, removing and disposing of construction area signs, or any other equipment used to protect the public or designate construction areas, as shown on the plans, as specified in the Standard Specifications and these Technical Specifications, and as directed by the Engineer.
2. Construction area signage at the beginning of roadway work shall be MUTCD C23 (CA).
3. Construction area signage at the end of roadway work shall be MUTCD G20-2.

D. Bid Item 4: Sediment & Erosion Control

1. Basis of Measurement and Payment: The contract lump sum price paid for "Sediment and Erosion Control" shall include full compensation for complying with section 01 57 23 Storm Water Pollution Prevention of these specifications including furnishing all labor, materials, tools, equipment, and incidentals for doing all the work involved in developing, preparing, obtaining approval of, revising, amending, and implementing the water pollution control plan (WPCP) and maintaining best management practices (BMP's), and for doing all the work involved in installing, constructing, maintaining, removing, and disposing of water pollution control practices, including non-storm water and waste management and materials pollution water pollution control practices, as specified in plans, the Standard Specifications, and the technical specifications, and as directed by the Engineer.

E. Bid Item 5: 2" Mill

1. Basis of Measurement and Payment: The contract unit price paid per square foot for "2" Mill" shall include full compensation for furnishing all labor, materials, tools, equipment, and incidentals, for doing all the work involved in milling two (2) inches of existing asphalt surface as shown on the Plans. The work includes but is not limited to milling, loading, and off-hauling removed material.

F. Bid Item 6: 2" HMA Overlay

1. Basis of Measurement and Payment: The contract unit price paid per ton for "2" HMA Overlay" shall include full compensation for furnishing all labor,

materials, tools, equipment, and incidentals, and for doing all the work involved in constructing a two (2) inch HMA overlay, including, tack coat, furnishing, placing, spreading, and compacting HMA (Type A per Section 32 12 16 "Asphalt Paving" and of the Technical Specifications) as specified in the project plans and technical specifications.

G. Bid Item 7: Base Repair (Revokable)

1. Basis of Measurement and Payment: The contract unit price paid per square foot for "Base Repair (Revokable)" shall include full compensation for furnishing all labor, materials, tools, equipment and incidentals, and for doing all the work involved in constructing asphalt concrete base repairs (dig outs), including cold-planning or grinding, saw cutting, excavating, loading, off-hauling, subgrade sampling, and testing according to ASTM D1557 12e-1 compaction of in-situ subgrade materials (e.g. aggregate base, native soil), compaction testing according to ASTM 06938 17a, tack coat, and furnishing, placing, spreading, and compacting HMA (Type A, 1/2-inch maximum per Section 32 12 17 "Asphalt Pavement Rehabilitation" of the Technical Specifications).
2. Base repair work shall take place after the two (2) inch mill is complete. After the two (2) inch mill, contractor shall walk the mill area with city representative / engineer and identify areas that need base repairs. The agreed upon dimensions shall be recorded as this will be the measurement of payment and no additional work outside the agreed upon area will be paid for.
3. Base Repair shall be to the depth of two (2) inches after a two (2) inch mill. Pavement fabric shall be Tensar Glaspave 50 (GP-50) as shown in the attached fact sheet. Pavement fabric shall be placed between existing asphalt surface and new HMA. HMA shall be placed in lifts not to exceed three (3) inches.

H. Bid Item 8: Micro-surfacing

1. Basis of Measurement: "Micro-surfacing" will be measured and paid for by the square foot for the actual surface areas covered.
2. The contractor shall provide material tags for tonnage of aggregate and emulsion used to show that the application rate of aggregate and emulsion was within the range required by the specifications. If the application rate of aggregate or emulsion falls outside the minimum amount required, the

Contractor shall reapply the Micro-surfacing on those areas that are determined to have not met the contract requirements.

3. Full compensation for Notifications shall be considered as included in the contract lump sum price paid for "Traffic Control" and no separate payment will be made therefor.
 4. Basis of Payment: The contract price paid per square foot for "Micro-surfacing" shall include full compensation for furnishing all labor, materials, tools, equipment and incidentals and for doing all the work involved in the furnishing and placing slurry seal surfacing complete in place, including clearing and grubbing, covering street facilities, cleaning the surfaces and protecting the slurry seal surfacing until it has set, rolling, sweeping, and temporary pavement striping, as shown on the plans, as specified in the Standard Specifications and Section 32 12 17 "Asphalt Pavement Rehabilitation" of the Technical Specifications, and as directed by the Engineer.
- I. Bid Item 9: Traffic Striping Detail 9
 1. Basis of Measurement and Payment: The price paid per linear foot for "Traffic Striping Detail 9" shall include full compensation for furnishing all labor, supervision, materials, tools, equipment and incidentals and for doing all work involved in striping detail 9 including, but not limited to, any necessary surface preparation, cat tracks, dribble lines, layout work, placing markers, placing thermoplastic, adhesive, glass beads, and all other work as shown on the Plans, as specified in the Standard Specifications and these Technical Specifications and as directed by the Engineer and no additional compensation will be allowed therefor.
 - J. Bid Item 10: Traffic Striping Detail 25A
 1. Basis of Measurement and Payment: The price paid per linear foot for "Traffic Striping Detail 25A" shall include full compensation for furnishing all labor, supervision, materials, tools, equipment and incidentals and for doing all work involved in striping detail 25A including, but not limited to, any necessary surface preparation, cat tracks, dribble lines, layout work, placing markers, placing thermoplastic, adhesive, glass beads, and all other work as shown on the Plans, as specified in the Standard Specifications and these Technical Specifications and as directed by the Engineer and no additional compensation will be allowed therefor.
 - K. Bid Item 11: Traffic Striping Detail 26
 1. Basis of Measurement and Payment: The price paid per linear foot for "Traffic Striping Detail 26" shall include full compensation for furnishing all labor, supervision, materials, tools, equipment and incidentals and for doing all work involved in striping detail 26 including, but not limited to, any necessary surface preparation, cat tracks, dribble lines, layout work, placing markers,

placing thermoplastic, adhesive, glass beads, and all other work as shown on the Plans, as specified in the Standard Specifications and these Technical Specifications and as directed by the Engineer and no additional compensation will be allowed therefor.

2. This bid item will be measured and paid for by the linear foot along the center line of the traffic stripes.

L. Bid Item 12: Traffic Striping Detail 38

1. Basis of Measurement and Payment: The price paid per linear foot for "Traffic Striping Detail 38" shall include full compensation for furnishing all labor, supervision, materials, tools, equipment and incidentals and for doing all work involved in striping detail 38 including, but not limited to, any necessary surface preparation, cat tracks, dribble lines, layout work, placing markers, placing thermoplastic, adhesive, glass beads, and all other work as shown on the Plans, as specified in the Standard Specifications and these Technical Specifications and as directed by the Engineer and no additional compensation will be allowed therefor.

M. Bid Item 13: Traffic Striping Detail 39

1. Basis of Measurement and Payment: The price paid per linear foot for "Traffic Striping Detail 39" shall include full compensation for furnishing all labor, supervision, materials, tools, equipment and incidentals and for doing all work involved in striping detail 39 including, but not limited to, any necessary surface preparation, cat tracks, dribble lines, layout work, placing markers, placing thermoplastic, adhesive, glass beads, and all other work as shown on the Plans, as specified in the Standard Specifications and these Technical Specifications and as directed by the Engineer and no additional compensation will be allowed therefor.
2. This bid item will be measured and paid for by the linear foot along the center line of the traffic stripes.

N. Bid Item 14: Traffic Striping Detail 39A

1. Basis of Measurement and Payment: The price paid per linear foot for "Traffic Striping Detail 39A" shall include full compensation for furnishing all labor, supervision, materials, tools, equipment and incidentals and for doing all work involved in striping detail 39A including, but not limited to, any necessary surface preparation, cat tracks, dribble lines, layout work, placing markers, placing thermoplastic, adhesive, glass beads, and all other work as shown on the Plans, as specified in the Standard Specifications and these Technical Specifications and as directed by the Engineer and no additional compensation will be allowed therefor.

2. This bid item will be measured and paid for by the linear foot along the center line of the traffic stripes.
- O. Bid Item 15: Thermoplastic 12" White (Limit Lines/Crosswalks)
1. Basis of Measurement and Payment: The price paid per linear foot for "Thermoplastic 12" White (Limit Lines/Crosswalks)" shall include full compensation shall include full compensation for furnishing all labor, supervision, materials, tools, equipment and incidentals and for doing all work involved in striping a 12" white stripe including, but not limited to, any necessary surface preparation, cat tracks, dribble lines, layout work, placing markers, placing thermoplastic, adhesive, glass beads, and all other work as shown on the Plans, as specified in the Standard Specifications and these Technical Specifications and as directed by the Engineer and no additional compensation will be allowed therefor.
 2. The 12" white stripe will be measured and paid for by the linear foot along the center line of the traffic stripe. Striping marked on the plans as 24" white stripe will be measured and paid for as two 12" white stripes.
- P. Bid Item 16: Thermoplastic 12" Yellow (Limit Lines/Crosswalks)
1. Basis of Measurement and Payment: The price paid per linear foot for "Thermoplastic 12" Yellow (Limit Lines/Crosswalks)" shall include full compensation shall include full compensation for furnishing all labor, supervision, materials, tools, equipment and incidentals and for doing all work involved in striping a 12" yellow stripe including, but not limited to, any necessary surface preparation, cat tracks, dribble lines, layout work, placing markers, placing thermoplastic, adhesive, glass beads, and all other work as shown on the Plans, as specified in the Standard Specifications and these Technical Specifications and as directed by the Engineer and no additional compensation will be allowed therefor.
 2. The 12" yellow stripe will be measured and paid for by the linear foot along the center line of the traffic stripe. Striping marked on the plans as 24" yellow stripe will be measured and paid for as two 12" yellow stripes.
- Q. Bid Item 17: Pavement Markings
1. Basis of Measurement and Payment: The price paid per square foot for "Pavement Markings" shall include full compensation for furnishing all labor, supervision, materials, tools, equipment and incidentals and for doing all work involved in placing thermoplastic markings including, but not limited to, any necessary surface preparation, cat tracking, layout work, thermoplastic, glass beads, and all other work as shown on the Plans, as specified in the Standard Specifications and these Technical Specifications and as directed by the

Engineer and no additional compensation will be allowed therefor. All pavement markings shall be thermoplastic.

R. Bid Item 18: Blue Fire Hydrant Markers

1. Basis of Measurement and Payment: The price paid per each amount for "Blue Fire Hydrant Markers" shall include full compensation for furnishing all labor, supervision, materials, tools, equipment and incidentals and for doing all work involved in placing blue raised reflective markers including, but not limited to, any necessary surface preparation, cat tracking, layout work, and all other work as shown on the Plans, as specified in the Standard Specifications and these Technical Specifications and as directed by the Engineer and no additional compensation will be allowed therefor.
2. Blue fire hydrant markers shall be placed per CA MUTCD Section 3B.11.

S. Bid Item 19: Adjust Existing Facilities to Grade

1. Basis of Measurement and Payment: The price paid per each amount for "Adjust Existing Facilities to Grade" shall include full compensation for furnishing all labor, supervision, materials, tools, equipment and incidentals and for doing all work involved in adjusting existing facilities to grade, and all other work as shown on the Plans, as specified in the Standard Specifications and these Technical Specifications and as directed by the Engineer and no additional compensation will be allowed therefor.
2. Frames and covers and frames and grates of existing manholes, monuments, water valves, anodes, hand-holes, air release valves, and PG&E valves, or other facilities shall be lowered to accommodate the grinding operation and raised back up to finished grade after the surface layer of asphalt is placed at locations indicated on the plans.

T. Bid Item 20: Traffic Signal Loop Detectors

1. Basis of Measurement and Payment: The price paid per each amount for "Traffic Signal Loop Detectors" shall include full compensation for furnishing all labor, supervision, materials, tools, equipment and incidentals and for doing all work involved in removing and replacing traffic signal loop detectors, loop conductors including loop conductors leading to the detector box, and all other work as shown on the Plans, as specified in the Standard Specifications and these Technical Specifications and as directed by the Engineer and no additional compensation will be allowed therefor.
2. For City owned traffic signals where traffic signal loops are present, the Contractor shall notify the Project Manager a minimum of one (1) week prior to beginning work near loops.

3. Contractor shall comply with Caltrans Standard Plan ES-5A and ES-5B when constructing detector loops.

4. Type C detector loop is designated for bike loops.

U. Bid Item 21: Median Demo

1. Basis of Measurement and Payment: The lump sum price paid for "Median Demo" shall include full compensation for furnishing all labor, supervision, materials, tools, equipment and incidentals and for doing all work involved in removing the section of the median shown on plans, but not limited to, any necessary surface preparation, transportation and disposal of demoed material, and all other work as shown on the Plans, as specified in the Standard Specifications and these Technical Specifications and as directed by the Engineer and no additional compensation will be allowed therefor. All pavement markings shall be thermoplastic.

V. Bid Item 22: Concrete Curb

1. Basis of Measurement and Payment: The price paid per linear foot for "Concrete Curb" shall include full compensation for furnishing all labor, supervision, materials, tools, equipment and incidentals and for doing all work involved constructing a six (6) inch concrete vertical curb, but not limited to, any necessary surface preparation, sawcut, forming, and all other work as shown on the Plans, as specified in the Standard Specifications and the Technical Specifications "Concrete Surface Improvements" and as directed by the Engineer and no additional compensation will be allowed therefor.

W. Bid Item 23: ADA Curb Ramp

1. Basis of Measurement and Payment: The price paid per each amount for "ADA Curb Ramps" shall include full compensation for furnishing all labor, supervision, materials, tools, equipment and incidentals and for doing all work involved in removing the existing concrete ramp, curb, gutter, and AC pavement, and replace with new concrete ramp, flares, retaining curb, curb and gutter immediately adjacent to curb ramp and flares, compaction, and all other incidental work associated with this item as shown in the plans, technical specifications, standard Caltrans plans, and as directed by the Engineer. See Sheet CD-1 and CD-2 in the plans for applicable details.

2. This item includes saw cutting, disposal of waste material, vandalism prevention during concrete curing time, aggregate base preparation, work around utility poles, adjusting grade of existing meter boxes, doweling into existing sidewalk, truncated domes, retaining curbs all other work as shown on the Plans, as specified in the Standard Specifications and these Technical Specifications, and as directed by the Engineer and no additional compensation will be allowed therefor.

3. Curb ramps work associated with this item shall be completed before pavement rehabilitation work begins to prevent damage to newly paved / surfaced roadway.

X. Bid Item 24: 18" RCP

1. Basis of Measurement and Payment: The lump sum price paid for "18" RCP" shall include full compensation for furnishing all labor, supervision, materials, tools, equipment and incidentals and for doing all work involved in removing the existing 18" RCP pipe, installing four (4) linear feet of new eighteen (18) inch reinforced concrete pipe, replacing steel frame and grate on the inlet, replacing the storm drain cover, but not limited to, any necessary trenching, shoring, demolition, pipe removal, transportation, sawcut, forming, and all other work as shown on Plans, as specified in the Standard Plans and Specifications, Technical Specifications, Contra Costa County Standard Plans and Specifications, and as directed by the Engineer and no additional compensation will be allowed therefor.
2. All construction work associated with this item shall be completed before pavement rehabilitation work at location shown on Sheet I-3 to prevent damage to newly paved / surfaced roadway.

Y. Bid Item 25: Concrete Curb and Gutter

1. Basis of Measurement and Payment: The price paid per linear foot for "Concrete Curb and Gutter" shall include full compensation for furnishing all labor, supervision, materials, tools, equipment and incidentals and for doing all work involved constructing a six (6) inch concrete vertical curb and concrete gutter, but not limited to, any necessary surface preparation, sawcut, forming, and all other work as shown on the Plans, as specified in the City Standard Plans, City Standard Specifications, Technical Specifications "Concrete Surface Improvements," and as directed by the Engineer and no additional compensation will be allowed therefor.

Z. Bid Item 26: Sidewalk Replacement

1. Basis of Measurement and Payment: The price paid per square foot for "Sidewalk Replacement" shall include full compensation for furnishing all labor, supervision, materials, tools, equipment and incidentals and for doing all work involved removing existing sidewalk and constructing new concrete sidewalk, but not limited to, any necessary surface preparation, sawcut, forming, and all other work as shown on the Plans, as specified in the City Standard Plans, City Standard Specifications, Technical Specifications "Concrete Surface Improvements," and as directed by the Engineer and no additional compensation will be allowed therefor.
2. Prior to demolition of existing sidewalk, contractor shall verify limits of work with engineer or his representative at each work location. The agreed upon

dimensions shall be recorded as this will be the measurement of payment and no additional work outside the agreed upon area will be paid for.

AA. Bid Item 27: Asphalt Plug

1. Basis of Measurement and Payment: The price paid per square foot for "Asphalt Plug" shall include full compensation for furnishing all labor, supervision, materials, tools, equipment and incidentals and for doing all work involved in removing existing asphalt and constructing a new asphalt plug, but not limited to, any necessary surface preparation, sawcut, recompacting aggregate base, transportation, and all other work as shown on the Plans, as specified in the City Standard Plans, City Standard Specifications, and as directed by the Engineer and no additional compensation will be allowed therefor.
2. Asphalt plug shall be to the existing aggregate base. Existing aggregate base shall be scarified and recompacted to 90% compaction.

1.4 PAYMENT

- A. Payment will be made for actual quantity of work performed at contract unit price, as directed and accepted, in accordance with requirements of the General Conditions.

END OF SECTION 01 22 00



GlasPave® Waterproofing Paving Mat

Specification Sheet – GlasPave® 25/50 Waterproofing Paving Mat

Specifications for Use in Asphalt Overlays					
Property	Test Method	GP25		GP50	
		Metric	Imperial	Metric	Imperial
Tensile Strength (Ultimate) (MD X XD)	ASTM D5035 EN-ISO 10319	25 x 25 kN/m	142 x 142 lbs/in.	50 x 50 kN/m	285 x 285 lbs/in.
Tensile Elongation	ASTM D5035 EN-ISO 10319	< 5%	< 5%	< 5%	< 5%
Young's Modulus E		73,000 MPa	10.6 x 10 ⁶ psi	73,000 MPa	10.6 x 10 ⁶ psi
Mass/Unit Area	ASTM D5261 ISO 9864	136 g/m ²	4.0 oz/yd ²	237 g/m ²	7.0 oz/yd ²
Asphalt Retention	ASTM D6140 EN 15381 Annex C	0.47 l/m ²	0.10 gal/yd ²	0.47 l/m ²	0.10 gal/yd ²
Melting Point	ASTM D276 EN-ISO 3146	> 232°C	> 450°F	> 232°C	> 450°F
Roll Size		1.27 x 228.6 m 1.91 x 228.6 m 3.81 x 109.7 m	50 in x 250 yds 75 in x 250 yds 150 in x 120 yds	1.91 x 109.7 m 3.81 x 65.8 m	75 in x 120 yds 150 in x 72 yds
Roll Area		290 m ² 436 m ² 418 m ²	347 yd ² 521 yd ² 500 yd ²	209.0 m ² 250.8 m ²	250 yd ² 300 yd ²

The values and tolerances given are obtained in our laboratories and in accredited testing institutions. All imperial values are approximate. The information given in this data sheet is to the best of our knowledge true and correct. However new research and practical experience can make revisions necessary. We reserve the right to make changes at any time. Statements concerning possible use of our product are not intended as recommendations for their use in the infringement of any patent. No patent warranty of any kind, expressed or implied, is made or intended.

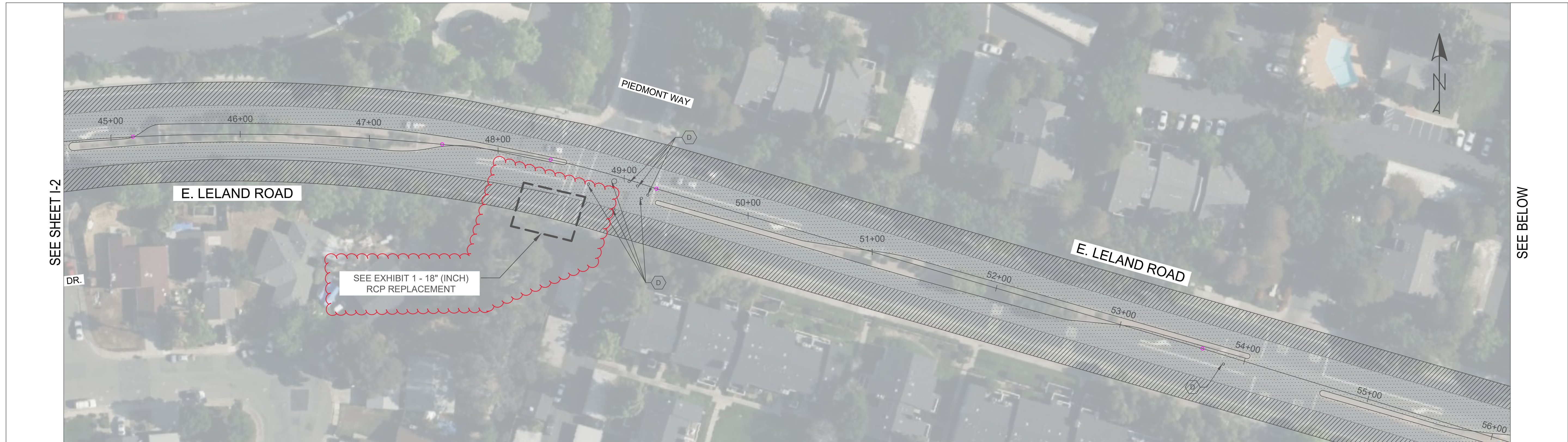


Tensar International Corporation
2500 Northwinds Parkway
Suite 500
Alpharetta, GA 30009
800-TENSAR-1
tensarcorp.com

GlasPave® is distributed in the United States of America, Canada and certain other countries by Tensar International Corporation (Tensar). Inasmuch as Saint-Gobain ADFORS and Tensar have no control over installation design, installation workmanship, accessory materials, or conditions of application, Saint-Gobain ADFORS and Tensar do not warrant the performance or results of any installation or use of GlasPave®. This warranty disclaimer includes all implied warranties, statutory or otherwise, including the warranty of merchantability and of fitness for a particular purpose.

©2016, Tensar International Corporation

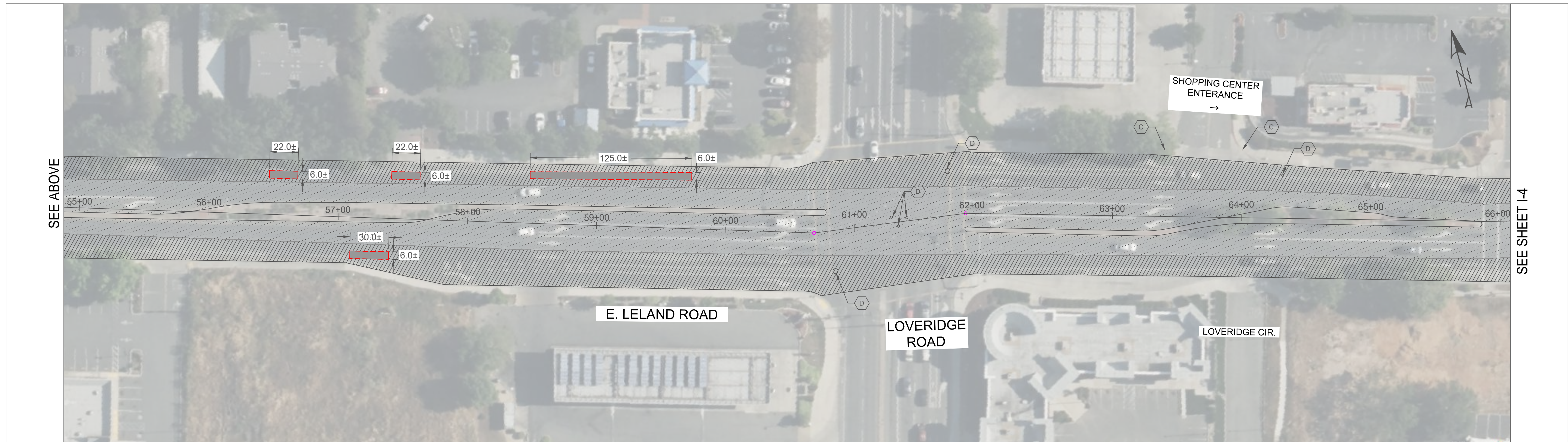
Exclusive distributors in the Americas for: ADFORS SAINT-GOBAIN



SEE SHEET I-2

SEE BELOW

E. LELAND ROAD: FROM STA. 45+00 TO STA. 56+00



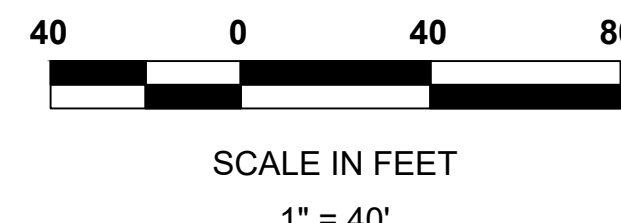
SEE ABOVE

SEE SHEET I-4

E. LELAND ROAD: FROM STA. 55+00 TO STA. 66+00

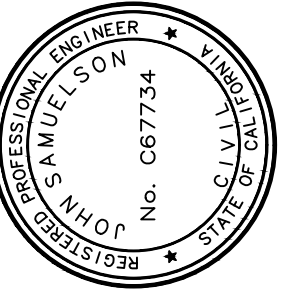
NOTES

1. AFTER 2-INCH MILL CONTRACTOR SHALL INSPECT THE MILL AREA WITH CITY REPRESENTATIVE / ENGINEER AND IDENTIFY AREAS THAT NEED BASE REPAIRS. THE AGREED UPON DIMENSIONS SHALL BE RECORDED AS THIS WILL BE THE MEASUREMENT OF PAYMENT AND NO ADDITIONAL WORK OUTSIDE THE AGREED UPON AREA WILL BE PAID FOR.
2. ADA CURB RAMPS SHALL BE BUILT AS SHOWN ON PROJECT DETAILS. CONTRACTOR SHALL COMPLY WITH CALTRANS STANDARD DETAIL A88A AND CONTRA COSTA COUNTY DETAIL CA74. ADA CURB RAMPS IN THIS PROJECT REFER TO THE RAMP, DETECTABLE WARNING SURFACE, LANDING, WINGS, SIDEWALK REQUIRED TO CONFORM, AND RETAINING CURB IF APPLICABLE.



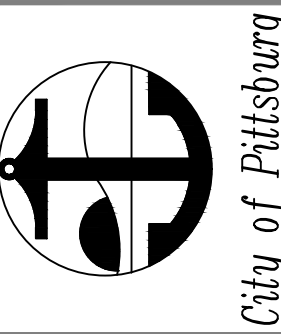
LEGEND

- INSTALL CURB RAMP CASE C, SEE CD-1 & CD-2 DETAILS 3, 4, 7, & 8
- ADJUST EXISTING FACILITY TO GRADE, SEE DETAILS 12 & 13, SHEET CD-3
- MICRO SURFACING, SEE DETAIL 1, SHEET CD-1
- POTENTIAL BASE REPAIR AREA, SEE NOTE 1 AND DETAIL 10, SHEET CD-2
- 2" MILL & OVERLAY, SEE DETAIL 11, SHEET CD-2



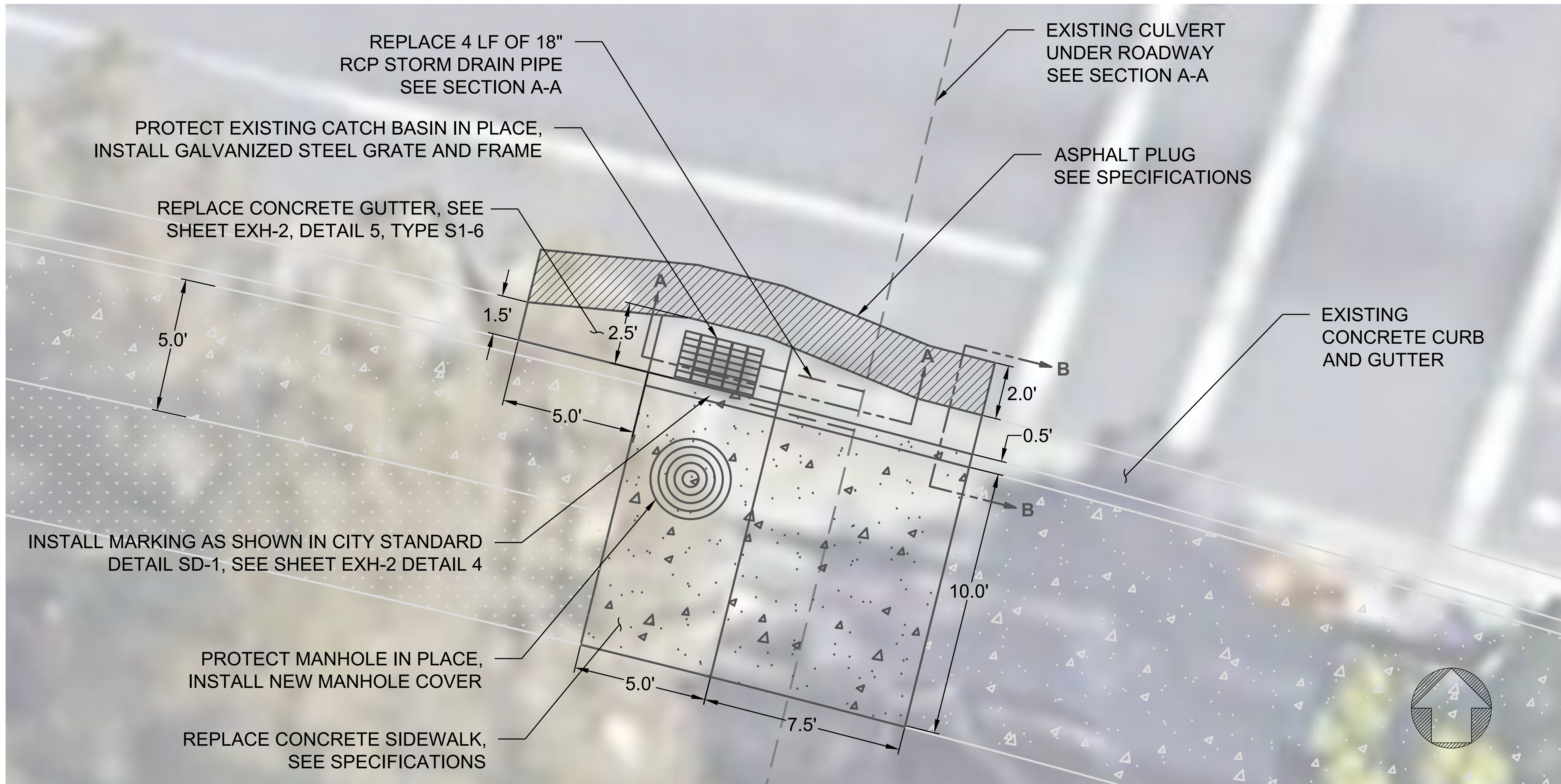
PREPARED UNDER THE DIRECTION OF:

 JOHN SAMUELSON
 P.C.E. C67734
 Date: 7/1/23



**PROJECT 2241
 E LELAND ROAD PAVEMENT MAINTENANCE
 IMPROVEMENT PLANS**

DATE	REV	DESCRIPTION	BY	SCALE
			SR	N/A



REPLACE 4 LF OF 18" RCP STORM DRAIN PIPE SEE SECTION A-A

EXISTING CULVERT UNDER ROADWAY SEE SECTION A-A

PROTECT EXISTING CATCH BASIN IN PLACE, INSTALL GALVANIZED STEEL GRATE AND FRAME

ASPHALT PLUG SEE SPECIFICATIONS

REPLACE CONCRETE GUTTER, SEE SHEET EXH-2, DETAIL 5, TYPE S1-6

EXISTING CONCRETE CURB AND GUTTER

INSTALL MARKING AS SHOWN IN CITY STANDARD DETAIL SD-1, SEE SHEET EXH-2 DETAIL 4

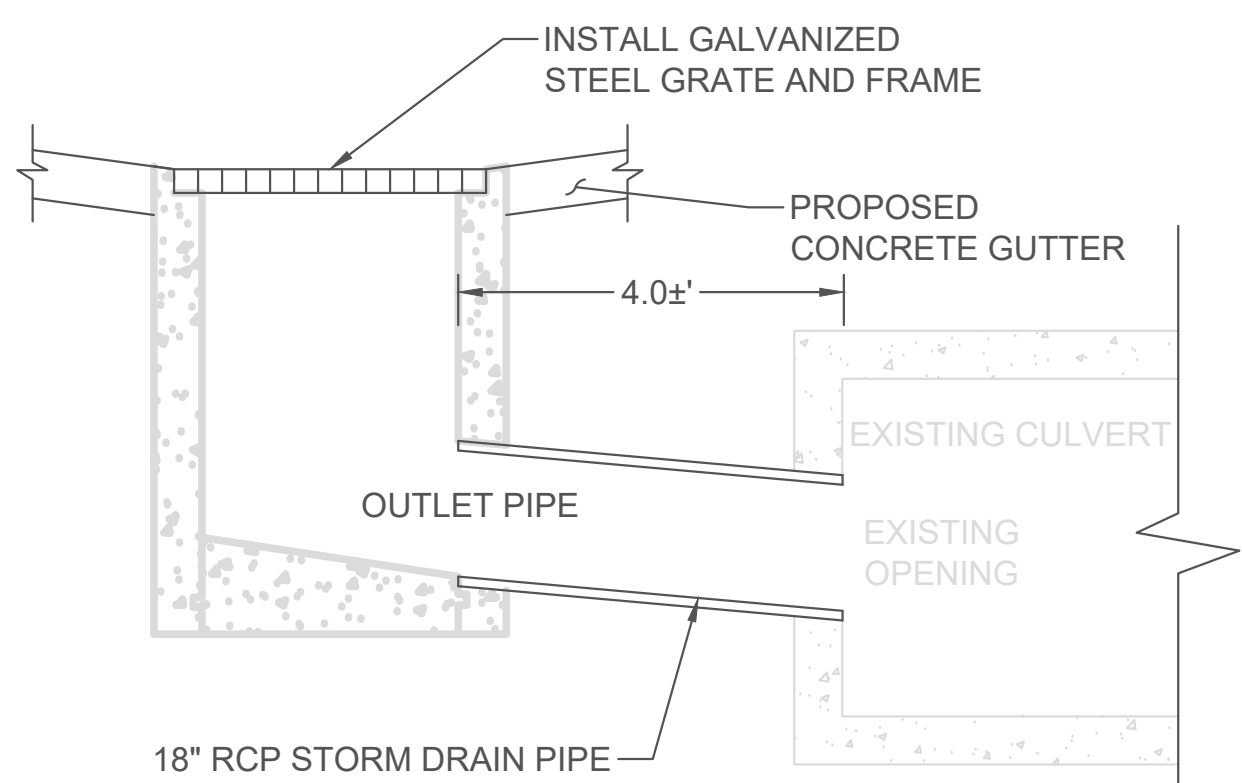
PROTECT MANHOLE IN PLACE, INSTALL NEW MANHOLE COVER

REPLACE CONCRETE SIDEWALK, SEE SPECIFICATIONS

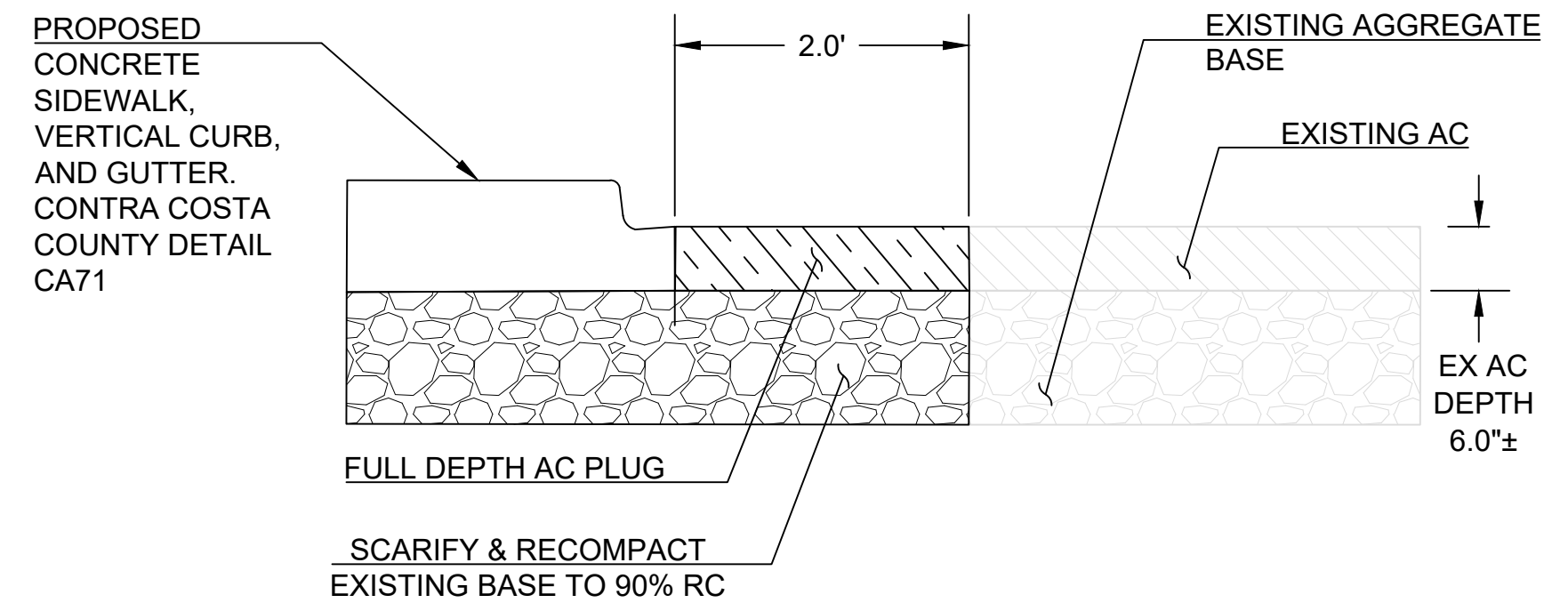
PLAN VIEW
NOT TO SCALE

- NOTES**
- LIMITS OF SHALL BE CONFIRMED WITH CITY REPRESENTATIVE / ENGINEER PRIOR TO DEMOLITION.
 - CONCRETE SIDEWALK, GUTTER, AND CURB SHALL COMPLY WITH CONTRA COSTA COUNTY STANDARD DETAIL CA 71 TYPE S1 - 6 AND CA74. SEE SHEET EXH-2, DETAIL 1 AND DETAIL 5.
 - CATCH BASIN GRATE AND FRAME SHALL COMPLY WITH CALTRANS STANDARD PLAN D77B. MANHOLE LID/COVER SHALL COMPLY WITH CONTRA COSTA COUNTY STANDARD PLAN CD30. SEE SHEET EXH-2 DETAIL 2 AND 3. FOR ALL ELEMENTS OF STORM DRAIN WORK SEE CITY STANDARD PLANS AND SPECIFICATIONS.

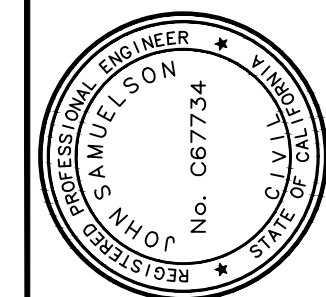
- LEGEND**
- PROPOSED CONCRETE SIDEWALK, SEE SPECIFICATIONS
 - ASPHALT PLUG, SEE SECTION B-B, SEE SPECIFICATIONS
 - EXISTING CONCRETE SIDEWALK
 - EXISTING LANDSCAPING



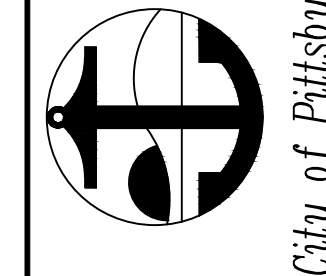
SECTION A-A
NOT TO SCALE



SECTION B-B
NOT TO SCALE



PREPARED UNDER THE DIRECTION OF:
JOHN SAMUELSON
R.C.E. 067734
7/27/23
DATE

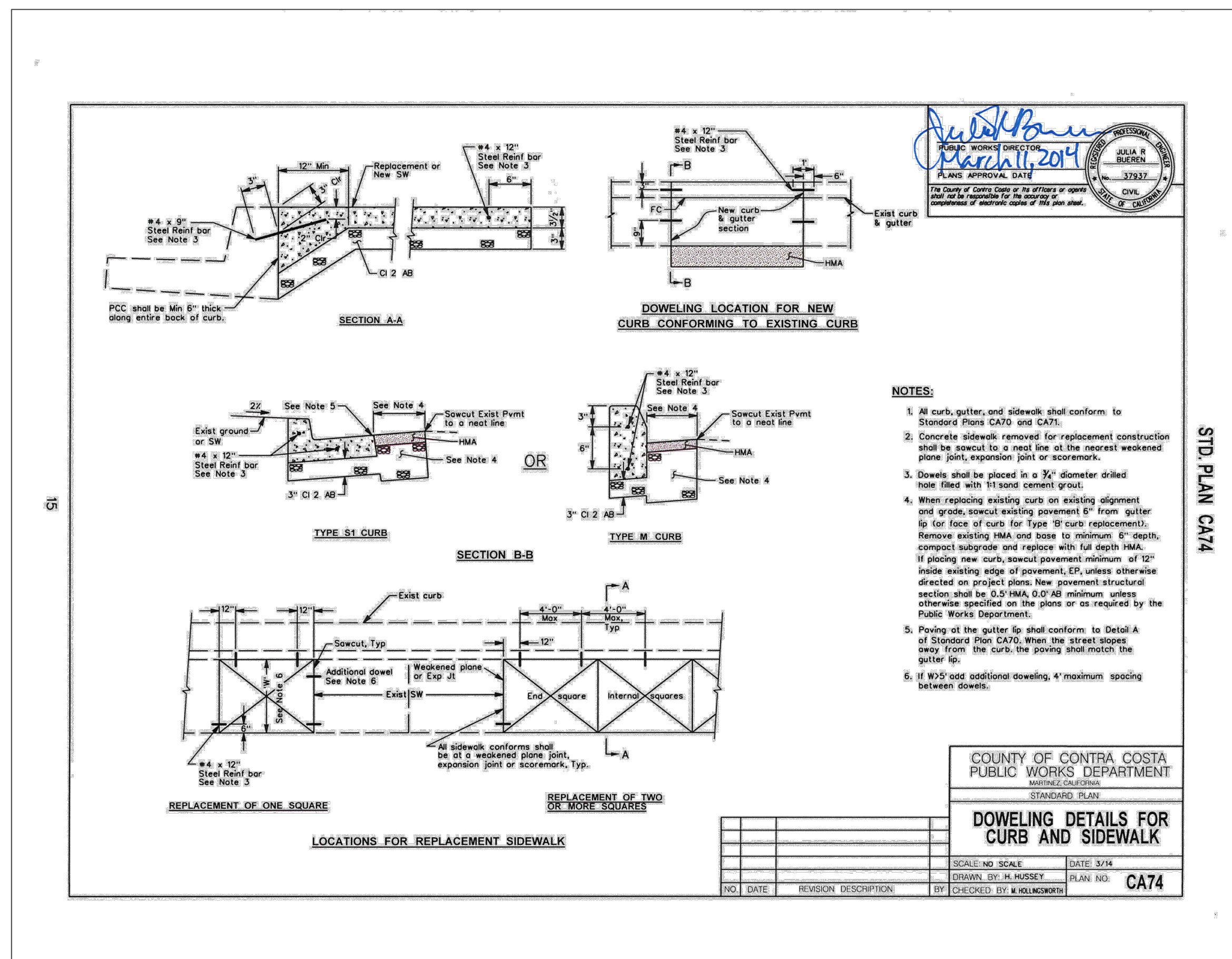


PROJECT 2241
EXHIBIT 1 - 18" RCP REPLACEMENT

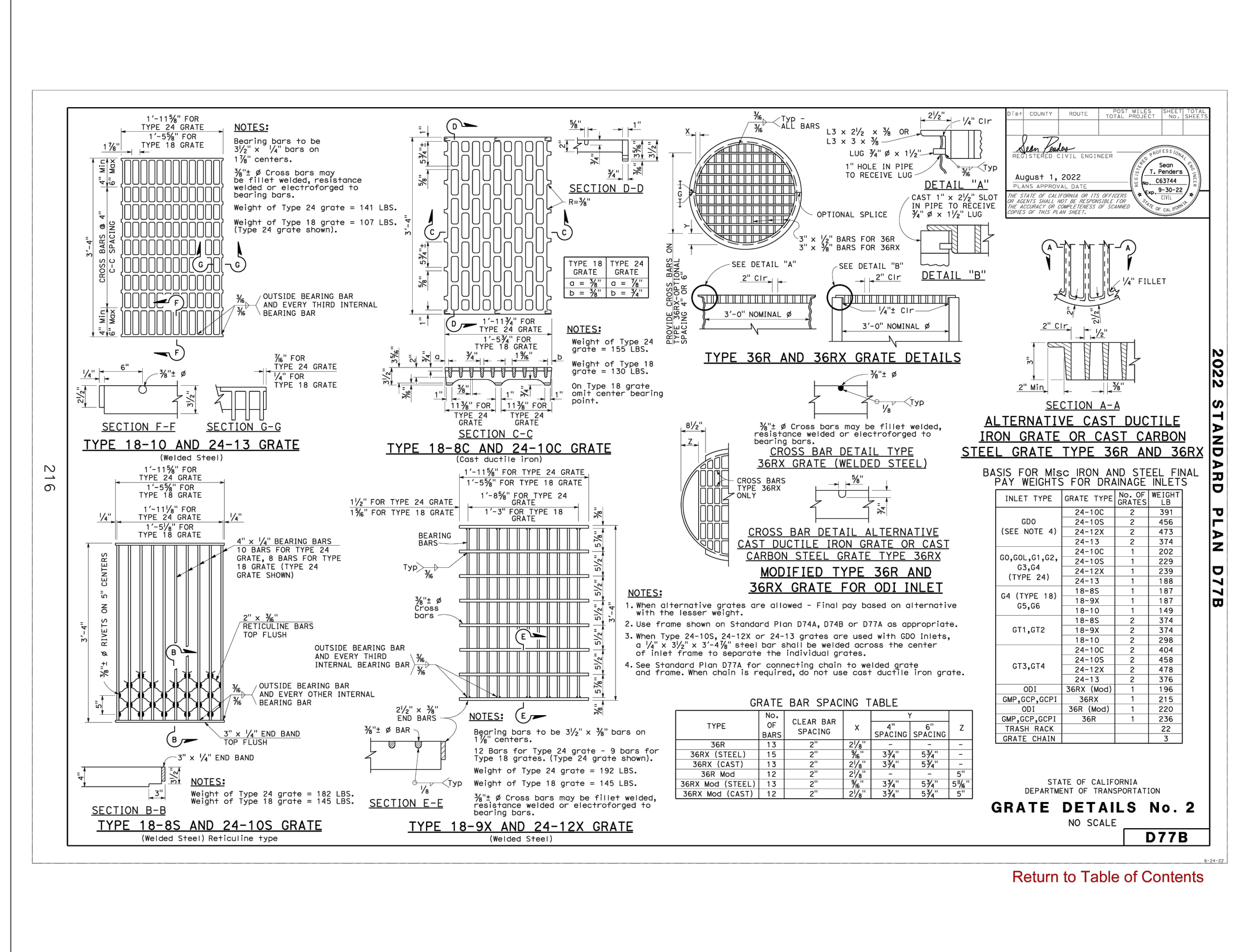
BY	DESCRIPTION
DRAWN: SR	
CHECKED: SR	
REVIEWED: DJ	
DATE: 7/27/23	
SCALE: N/A	

DATE	REV	DESCRIPTION

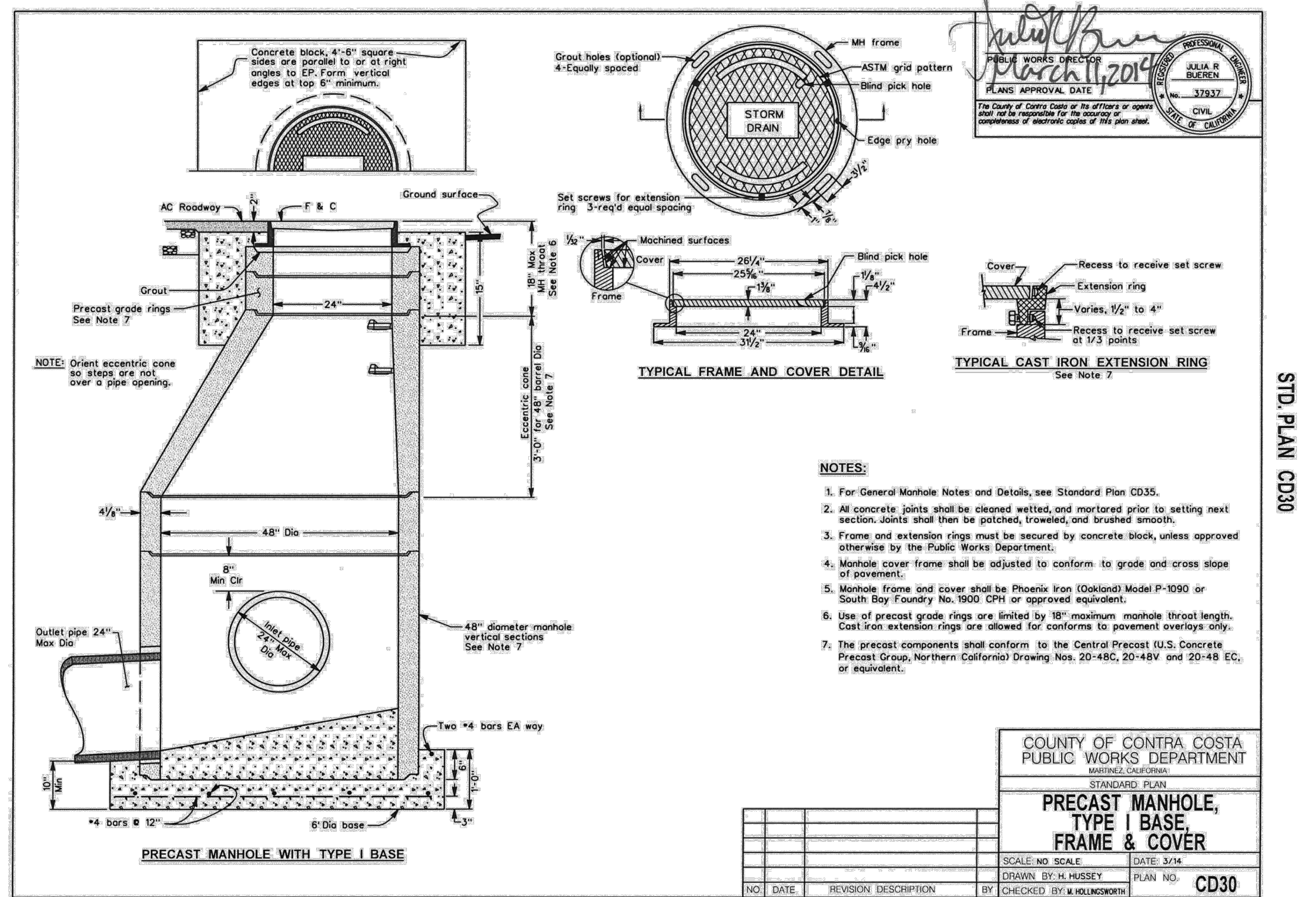
SHEET:
1 OF 2
SHEET NO.
EXH-1



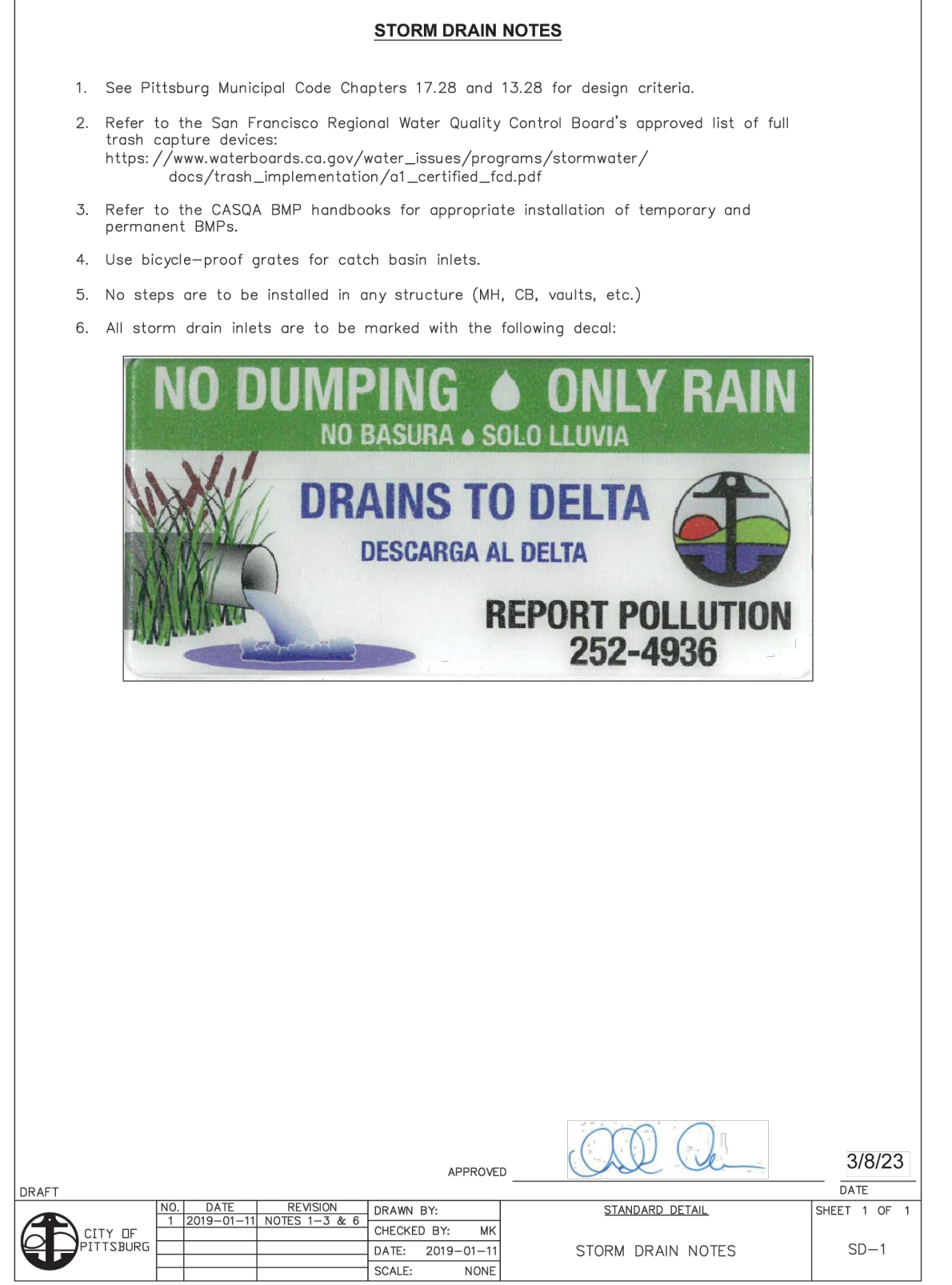
DETAIL 1 - CONTRA COSTA COUNTY STANDARD DETAIL CA74
NOT TO SCALE



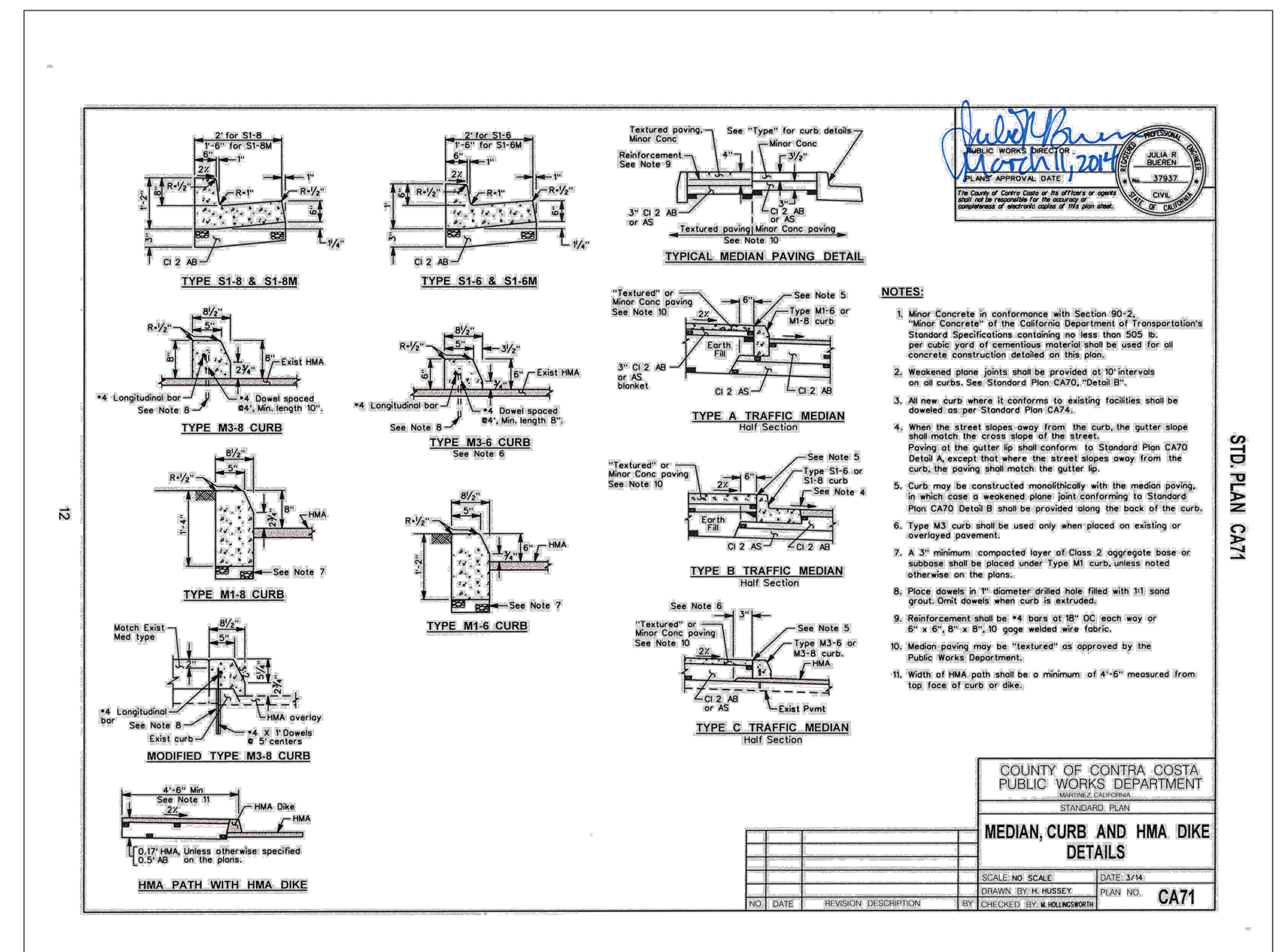
DETAIL 2 - CALTRANS STANDARD DETIAL D77B
NOT TO SCALE



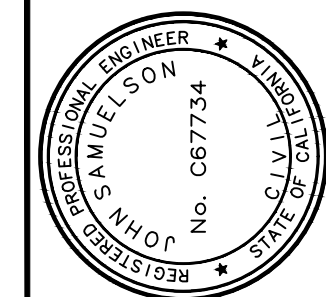
DETAIL 3 - CONTRA COSTA COUNTY STANDARD DETAIL CD30
NOT TO SCALE



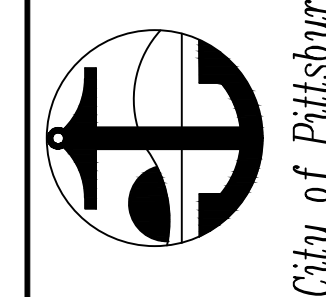
DETAIL 4 - CITY OF PITTSBURG STANDARD DETIAL SD-1
NOT TO SCALE



DETAIL 5 - CONTRA COSTA COUNTY STANDARD DETAIL CA71
NOT TO SCALE



PREPARED UNDER THE DIRECTION OF:
7/27/23
Date
JOHN SAMUELSON
RCE 067734



PROJECT 2241
EXHIBIT 1 - 18" RCP REPLACEMENT

DATE	REV	DESCRIPTION	BY	ADDENDUM NO. 1
			DRAWN: SR	
			CHECKED: SR	
			REVIEWED: DJ	
			DATE: 7/27/23	
			SCALE: N/A	