

**CONTRACT NO. 2021-24  
CITY COUNCIL CHAMBERS UPGRADE PROJECT**

**ADDENDUM NO. 2**

This addendum consists of two (2) pages, amending the Contract Documents. All prospective bidders for the above-referenced project are to be aware that the following changes, additions and/or clarifications shall be included as an integral part of the Contract Documents for the above-referenced project, and that they are bounded by all conditions set forth therein.

**ALL PROSPECTIVE BIDDERS** are hereby notified that changes to the bidding documents for CONTRACT NO. 2021-24; CITY COUNCIL CHAMBERS UPGRADE PROJECT are to be made as described hereinafter.

**Plan Sheet TA7.1** – ‘Additive Bid Alt #1’ on sheet TA7.1 of the City Council Chambers Upgrade Project Plans, is part of the base scope and there are no additive alternatives in the bid. Please see attached updated plans.

**BIDDERS MUST SIGN AND ATTACH** one (1) copy of this addendum document to the bid proposal as acknowledgment of receipt of these instructions and that said addendum was properly evaluated in the proposal.

**ANY PROPOSAL NOT IN COMPLIANCE WITH THIS ADDENDUM MAY BE REJECTED.**

Issued: 2/3/2023

  
\_\_\_\_\_  
John Samuelson, City Engineer

Addendum No. 1, Contract No. 2021-24; City Council Chambers Upgrade is hereby acknowledged and was considered in this Contract Proposal.

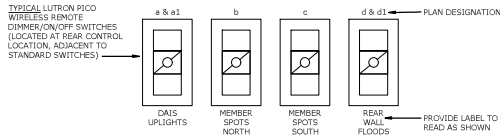
\_\_\_\_\_  
Bidder's Signature

\_\_\_\_\_  
Date

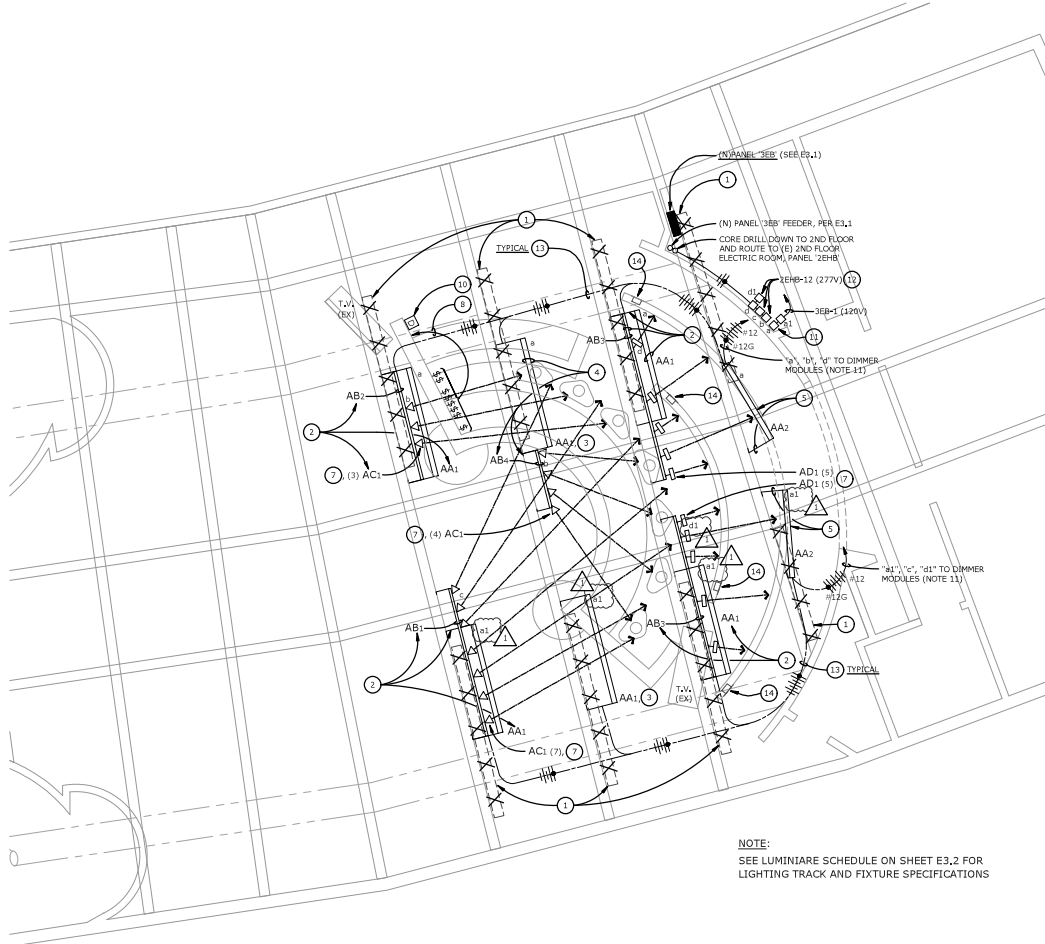
\_\_\_\_\_  
Firm Name

\_\_\_\_\_  
Mailing Address

\_\_\_\_\_  
City/State/Zip+4



**DIMMER SWITCH LAYOUT** ( [SYMBOL] )  
SCALE: NONE



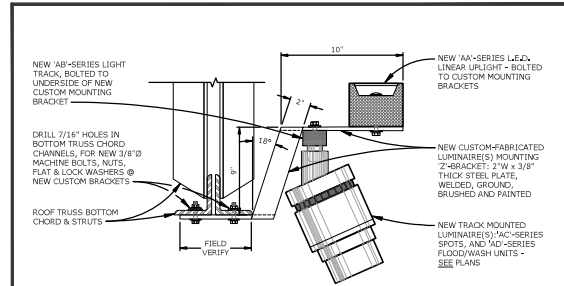
**NOTE:**  
SEE LUMINAIRE SCHEDULE ON SHEET E3.2 FOR LIGHTING TRACK AND FIXTURE SPECIFICATIONS

**3RD FLOOR COUNCIL CHAMBERS FLOOR PLAN - LIGHTING**  
SCALE: 1/4" = 1'-0"



**NUMBERED SHEET NOTES**

- 1 DISCONNECT, COMPLETELY REMOVE AND RETURN TO OWNER, ALL EXISTING LINEAR FLUORESCENT DIRECT/INDIRECT LUMINAIRES INDICATED AT THEIR CURRENT MOUNTING POSITIONS ON THE BOTTOM CHORDS OF THE STRUCTURAL ROOF TRUSS.
- 2 AFTER REMOVAL OF LUMINAIRES ( DESCRIBED IN NOTE #1 ABOVE ) IS COMPLETE, PROVIDE, INSTALL AND CONNECT COMPLETE NEW COMBINED LIGHTING ASSEMBLIES, TO INCLUDE 'AA'-SERIES LIGHT TRACK RUNS ( WITH 'AC1' LED SPOTLIGHTS OR 'AD1' LED FLOOD/WASH UNITS, AS INDICATED AT EACH ASSEMBLY ), AND 'AA'-SERIES LINEAR LED UPLIGHTS, BOTH BRACKET-MOUNTED ON A SERIES OF NEW, CUSTOM-FABRICATED HEAVY STEEL MOUNTING BRACKET ARMS TO BE BOLTED TO BOTTOM CHORDS OF THE (E) ROOF TRUSS ASSEMBLIES INDICATED, SEE LUMINAIRE SCHEDULE ON E3.2 AND DETAIL 2/E2.1.
- 3 THIS 'AA1' LINEAR LED UPLIGHT UNIT IS TO BE BRACKET-ARM MOUNTED FROM BOTTOM CHORD OF EXISTING ROOF TRUSS, SIMILAR TO THAT SHOWN IN DETAIL 2/E2.1.
- 4 THESE 'AA1' & 'AA4' LUMINAIRES TO BE BRACKET-ARM MOUNTED FROM BOTTOM CHORD OF EXISTING ROOF TRUSS, SIMILAR TO THAT SHOWN IN DETAIL 2/E2.1.
- 5 UPLIGHTS ARE TO BE BRACKET-ARM MOUNTED FROM THE BOTTOM CHORD OF THE EXISTING ROOF TRUSS, SIMILAR TO THAT SHOWN IN DETAIL 2/E2.1, EXCEPT THE LUMINAIRE IS NOT TO BE ANGLED RELATIVE TO THE TRUSS, AS SHOWN, TO IMPROVE THE UNIFORMITY OF REFLECTED LIGHT ON THE FULL-HEIGHT CURVED BACK WALL.
- 6 DISCONNECT AND REMOVE ALL EXISTING CONDUCTORS FROM EXISTING RACEWAYS SERVING EXISTING REMOVED LUMINAIRES (ER), BACK TO NEAREST OUTLET OR DEVICE TO REMAIN, AFTER NEW LUMINAIRES ARE FULLY INSTALLED, INTERCEPT AND EXTEND EXISTING BRANCH RACEWAYS TO NEW LUMINAIRES AND WALL DIMMERS, AND CONNECT ALL COMPLETE WITH NEW CONDUCTORS, AS REQUIRED, AND AS CALLED FOR ON THE PLANS, INCLUDING ZONES OF NEW DIMMING CONTROL, AS INDICATED.
- 7 AFTER THE NEW LIGHTING WORK IN THE COUNCIL CHAMBERS IS COMPLETE, PROPERLY PREPARE AND PAINT ALL NEW AND EXISTING RACEWAYS AND OUTLETS, AS WELL AS ALL NEW CUSTOM-FABRICATED LUMINAIRE(S) MOUNTING BRACKETS, TO MATCH EXISTING FINISH ON ROOF TRUSSES; PROPERLY CLEAN ALL SURFACES TO BE PAINTED, AND APPLY ONE COAT PRIMER, AND TWO COATS APPROVED SATIN ENAMEL PAINT.
- 8 RELOCATE (E) EXISTING SWITCHES AND DEVICE PLATES TO NORTH AS SHOWN, TO BE ACCESSIBLE AT REAR DESK; PROVIDE NEW FLUSH BOXES IN (E) CASEWORK AT SAME ELEVATION, SPLICE (E) WIRING AT (E) BOXES AND EXTEND WITH (N) #12 GAUGE IN CONCEALED FLEX CONDUIT THROUGH CASEWORK CHASE TO (N) SWITCH LOCATIONS; REINSTALL (E) SWITCHES AND DEVICE PLATES AT (N) BOXES; SAME ORIENTATION AS (E) SWITCHES; PROVIDE (N) #2-TOUCH LABELS ON EACH SWITCH TO IDENTIFY USE.
- 9 REPLAC (E) (E) 78 FLUORESCENT LAMPS TO REMAIN ON (E) TRUSS MOUNTED FIXTURES IN THIS ROOM WITH (N) F32T9/750 LAMPS; ALLOW FOR A TOTAL OF 1120 LAMPS.
- 10 PROVIDE AND INSTALL (4) WIRELESS LUTRON PICO DIMMER CONTROLS, PER 2/E2.1, PROGRAM AND COMMISSION TO WORK WITH LUTRON VIVE POWPAK DIMMER MODULES, PER NOTE 11, DIMMER 'B' TO CONTROL POWPAKS '1' AND 'A1', DIMMER '1' TO CONTROL POWPAK '1', DIMMER 'C' TO CONTROL POWPAK 'C', DIMMER '2' TO CONTROL POWPAKS '2' AND 'A1'.
- 11 PROVIDE AND INSTALL (6) LUTRON 120-277V VIVE 'POWPAK' PHASE SELECT DIMMING MODULES IN (E) 2-GANG BOXES, HIGH ON WALL OR OTHER SUITABLE LOCATION IN ROOM; CONNECT COMPLETE TO (N) LIGHTING FIXTURES OR CONTROL DESIGNATIONS '1' THROUGH 'A1', ZONES '1' AND 'A1' TO BE ON 120V CIRCUIT, ZONES '2' THROUGH 'A1' TO BE ON 277V CIRCUITS, PROGRAM AND COMMISSION TO WORK WITH LUTRON PICO DIMMER CONTROLS (NOTE 10) WITH ALL REQUIRED PERIPHERAL EQUIPMENT AND CONNECTIONS TO SUPPORT WIRELESS CONTROL, AND LINE VOLTAGE WIRE CONNECTIONS TO (N) FIXTURES; ALL RACEWAYS WITH 120V AND 277V WIRING IN SAME RACEWAYS TO HAVE 600V INSULATION CONDUCTORS.
- 12 UTILIZE (E) SPARE 20A/1P BREAKER IN (E) PANEL '2E1B' AT 2ND FLOOR, SEE 2/E3.2 FOR LOCATION.
- 13 ROUTE AT TRUSS WORK ABOVE IN (N) ENT, PAINTED TO MATCH (E) ADJACENT FINISHES, ALL CONDUCTORS MINIMUM 600V RATED INSULATION.
- 14 TURN-OFF AND DISCONNECT (E) IN-WALL VERTICAL FLOOR LIGHT (NO LONGER REQUIRED), WALL LIGHTING TO BE PROVIDED BY (N) OVERHEAD FLOOR LIGHTS ON ZONE '2'.



- DETAIL NOTES:**
1. BRACKET PROVIDED @ MAX. 48" O.C.
  2. ALL JOINTS WELDED ALL FOUR SIDES; WELDS GROUND & BRUSHED.
  3. DRILL BRACKETS AS REQ'D, FOR LUMINAIRE & TRACK MOUNTING HARDWARE.

**'AA' LUM. & 'AB' TRACK BRACKET MOUNTING**  
SCALE: NOT TO SCALE



**PITTSBURGH CITY HALL COUNCIL CHAMBERS - EM POWER & LIGHTING UPGRADE**  
PITTSBURGH, CA

**REVISIONS**

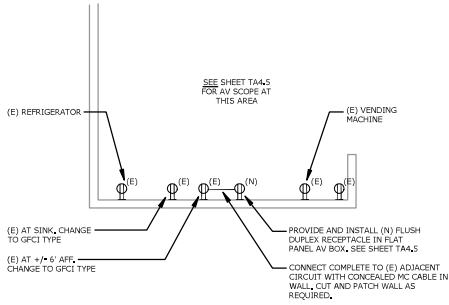
NO.	DESCRIPTION

PROJECT NO: 221036  
DRAWN BY: LNTV  
DRAWING SCALE:

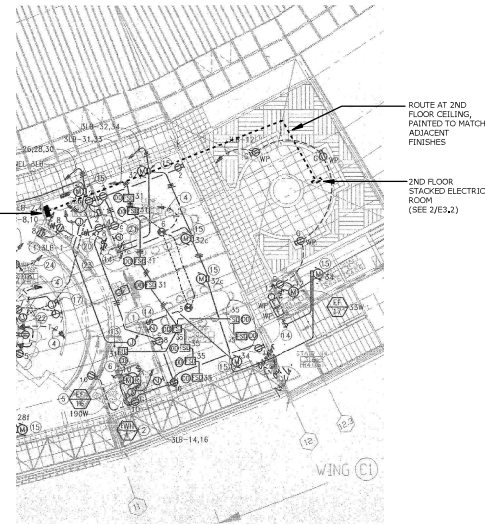
**BID DOCUMENTS**  
**SEPTEMBER 29, 2022**

SHEET TITLE  
**3RD FLOOR COUNCIL CHAMBERS FLOOR PLAN - LIGHTING**

SHEET NUMBER  
**E2.1**



**2ND FLOOR BREAK ROOM - PARTIAL PLAN**  
SCALE: NONE



**3RD FLOOR LOCATION PLAN**  
SCALE: NONE



**2ND FLOOR LOCATION PLAN**  
SCALE: NONE

**LUMINAIRE SCHEDULE**

TYPE	MOUNTING	DESCRIPTION	MFR.	CATALOG #	SOURCE DETAILS	POWER SUPPLY	VOLTS	INPUT WATTS
AA1	BRACKET ARM/TRUSS-CHORD MOUNTED	MODIFIED INRIDE; LINEAR LED LUMINAIRE ASSEMBLY. BOTTOM MOUNTED TO TOP FACE OF CUSTOM MOUNTING-ARM 2-BRACKETS, NOM. 4-1/2" x 4-1/2" W. X 8L. EXTRUDED ALUMINUM RECTILINEAR HOUSINGS. FLAT ENDCAPS. STANDARD SIGNAL WHITE FACTORY FINISH. FIELD-PAINTED WITH TWO (2) COATS HIGH-HEAT ENAMEL PAINT TO MATCH EXISTING ROOF TRUSS FINISH. (SEE NOTES & DETAILS, SHEET E2.1). INTEGRAL ELECTRONIC DIMMING DRIVER COMPATIBLE WITH NEW LUTRON PICOT WIRELESS REMOTE DIMMER. VERY HIGH OUTPUT. 3500K. 90CRI. WITH ASYMMETRIC SINGLE CIRCUIT CONTROL. SEE DETAIL 1/E2.1 FOR MOUNTING ON CUSTOM STEEL BRACKET ARMS AT BOTTOM CHORDS OF EXISTING ROOF TRUSSES.	FINELITE	HP4-S(MOD)-D-E-930-AS*-L (CONFIRM)-20-SC-LUT-2WFE; FIELD PAINTED CUSTOM COLOR.	LED 3000K 90CRI 8,230LM	INTEGRAL ELECTRONIC LED DIMMING DRIVER LUTRON 2-WIRE	120	73
AA2	BRACKET ARM/TRUSS-CHORD MOUNTED	SAME AS AA1 EXCEPT 6FT L. LOWER VAPORAGE. MOUNTING SIMILAR TO THAT SHOWN IN DETAIL 1/E2.1 EXCEPT BRACKETS ANGLED, AND DIFFERENT LENGTHS. FOR ANGLED INSTALLATION RELATIVE TO TRUSS CHORD, AS SHOWN ON PLANS.	FINELITE	HP4-S(MOD)-D-E-930-AS*-L (CONFIRM)-20-SC-LUT-2WFE; FIELD PAINTED CUSTOM COLOR.	LED 3000K 90 CRI 8,190LM	INTEGRAL ELECTRONIC LED DIMMING DRIVER LUTRON 2-WIRE	120	49
AB1	BRACKET ARM/TRUSS-CHORD MOUNTED	12" ØL EXTRUDED ALUMINUM SINGLE CIRCUIT LIGHT TRACK RUN, FIELD CUT TO 11" ØL MOUNTED AT BOTTOM CHORD OF ROOF TRUSS INDICATED. ON CUSTOM MOUNTING-ARM 2-BRACKETS (ALSO UTILIZED FOR MOUNTING OF TYPE AA1 LIGHT UNIT DESCRIBED ABOVE). PROVIDE ALL REQUIRE D MOUNTING HARDWARE, JOINERS, DIRECT LIVE-END POWER FEED CONNECTOR FITTING, FOR FLEX CONDUIT CONNECTION. PROVIDED WITH FACTORY STANDARD WHITE FINISH AND FIELD PAINTED AS DESCRIBED FOR AA1 ABOVE AFTER FULLY MASKING ENTIRE APERTURE. (SEE SEE NOTES & DETAILS, SHEET E2.1).	LIGHTOLIER	6112NWH6148NWH-260926148NWH; FIELD CUT TO 11FT. PAINT TO MAT	N/A	N/A	120	N/A
AB2	BRACKET ARM/TRUSS-CHORD MOUNTED	SAME AS AB1 EXCEPT 8' ØL RUN.	LIGHTOLIER	6108NWH6148NWH-260926148NWH	N/A	N/A	277	N/A
AB3	BRACKET ARM/TRUSS-CHORD MOUNTED	SAME AS AB1 EXCEPT FULL 12FT LONG RUN.	LIGHTOLIER	6112NWH6148NWH-260926148NWH	N/A	N/A	277	N/A
AB4	BRACKET ARM/TRUSS-CHORD MOUNTED	SAME AS AB1 EXCEPT 4' ØL RUN.	LIGHTOLIER	6104NWH6148NWH-260926148NWH	N/A	N/A	277	N/A
AC1	TRACK MOUNTED	ADJUSTABLE LED SPOTLIGHT TRACK MOUNTED, WITH INTEGRAL LUTRON 2-WIRE ELECTRONIC DIMMING DRIVER, ACCESSORY HOLDER, LINEAR SPREAD LENS, FLAT BLACK GLARE SHOOT, STANDARD FLAT BLACK FINISH. PROVIDE: (4) UNITS W/ 110mm NARROW SPOT REFLECTOR, (6) UNITS W/ 170mm SPOT REFLECTOR, AND (5) UNITS WITH 24 9mm NARROW FLOOD REFLECTOR. NOTE: CONFIRM COMPATIBILITY WITH NEW DIMMING CONTROLS PRIOR TO RELEASE OF ORDER.	LIGHTOLIER	LAV-40-930-BK-CW-LAV-2-RHS4-RS(0)-RNF(0)-LLAV15A9BK-235UT6-LLAV12LS	LED 3000K 90 CRI 22,300LM	INTEGRAL ELECTRONIC LED DIMMING DRIVER LUTRON 2-WIRE	277	34
AD1	TRACK MOUNTED	ADJUSTABLE LED FLOODLIGHT/WALL WASH UNIT, TRACK MOUNTED, WITH INTEGRAL LUTRON 2-WIRE ELECTRONIC DIMMING DRIVER, GLARE VISOR. NOTE: CONFIRM COMPATIBILITY WITH NEW DIMMING CONTROLS PRIOR TO RELEASE OF ORDER.	LIGHTOLIER	LWW-40-930-BK-BK-930-8128BK-MAELV-	LED 3000K 90 CRI 21,540LM	INTEGRAL ELECTRONIC LED DIMMING DRIVER LUTRON 2-WIRE	277	41
NOTE	AIMING SESSIONS:	BIDS SHALL INCLUDE TWO (2) LIGHTING AIMING SESSIONS, TO BE SCHEDULED IN ADVANCE BY THE CONTRACTOR. PROVIDE ALL REQUIRED LADDERS, LIFTS, MIN TWO PERSONNEL TO PERFORM AIMING OF ALL NEW LUMINAIRES AS DIRECTED BY THE ELECTRICAL ENGINEER/LIGHTING DESIGN PROJECT MANAGER. ALL AIMING SHALL BE DONE IN THE PRESENCE OF THE OWNER'S REPRESENTATIVE.						



**1ST FLOOR LOCATION PLAN**  
SCALE: NONE



**PITTSBURG CITY HALL COUNCIL CHAMBERS - EM POWER & LIGHTING UPGRADE**  
PITTSBURG, CA

REVISIONS

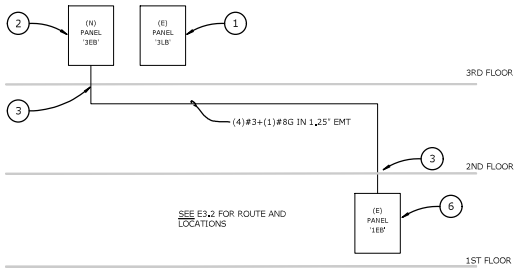

PROJECT NO: 221036  
DRAWN BY: LNTV  
DRAWING SCALE:

BID DOCUMENTS  
SEPTEMBER 29, 2022

SHEET TITLE  
**(E) CONDITIONS ROUTING TO 1ST FLOOR + LUMINAIRE SCHEDULE**

SHEET NUMBER  
**E3.2**





**SINGLE LINE RISER DIAGRAM - POWER**  
SCALE: NONE

(N) PANEL 3EB											
VOLTS: 120/208			MAIN BRKR: MLO			FEDER: SEE 2E3.1			CONDUIT: SEE 2E3.1		
PHASE: 3PH			FEDER: SEE 2E3.1			MOUNTED: SURFACE			AC RATING: 3KVA		
WIRE: 4W			CONDUIT: SEE 2E3.1			MOUNTED: SURFACE			AC RATING: 3KVA		
BUSBUNG: 100A			CONDUIT: SEE 2E3.1			MOUNTED: SURFACE			AC RATING: 3KVA		
POLES: 3BP			CONDUIT: SEE 2E3.1			MOUNTED: SURFACE			AC RATING: 3KVA		
LOAD DESCRIPTION											
LOAD DESCRIPTION	TYPE	A	B	C	BRKR	CKT.	DKT.	BRKR	A	B	C
(N) DAIS INDIRECT UPLIGHTS	1	0.70			20/1	1	2	20/1	1.00		
(E) CHAMBERS COUNTERS - RECEPT	1		0.90		20/1	3	4	20/1			
(E) CHAMBERS COUNTERS - RECEPT	1		0.90		20/1	5	6	20/1			
(E) CHAMBERS COUNTERS - RECEPT	1	0.54			20/1	7	8				
(E) CHAMBERS FLOOR - RECEPT	1		0.80		20/1	9	10				
(E) CHAMBERS FLOOR - RECEPT	1		1.09		20/1	11	12				
(E) CHAMBERS FLOOR - RECEPT	1	1.28			20/1	13	14				
S P A C E						15	16				
S P A C E						17	18				
S P A C E									1.00	0.00	0.00
TOTALS		2.50	1.70	1.99							

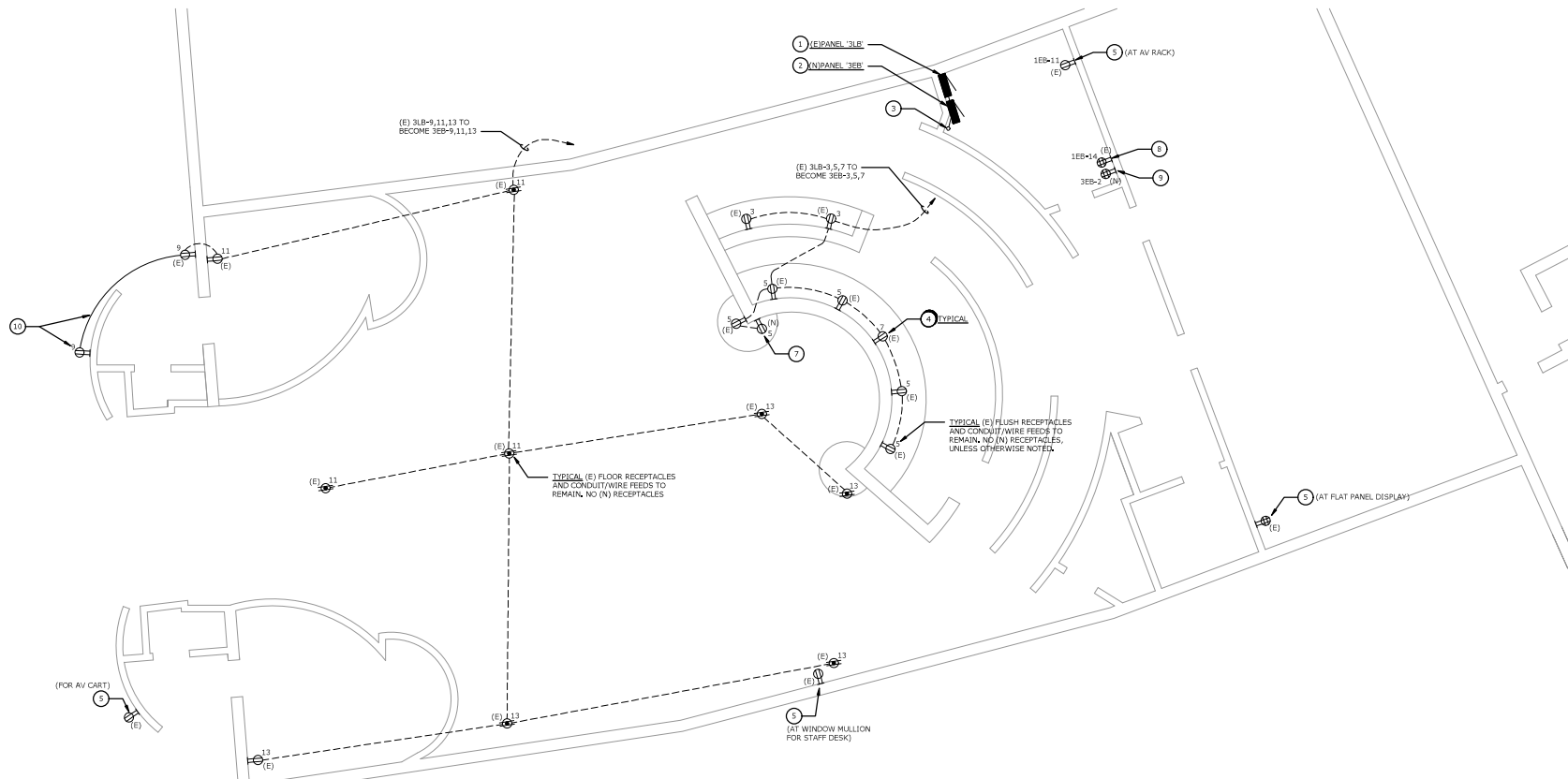
DEMAND LOAD SUMMARY			
TYPE "M" NON-CONTINUOUS / MISC LOADS	#REF!	100%	#REF!
TYPE "L" LIGHTING / CONTINUOUS LOADS	#REF!	125%	#REF!
TYPE "R" RECEPTACLES (FIRST 3KVA)	#REF!	100%	#REF!
TYPE "R" RECEPTACLES (OVER 3KVA)	#REF!	50%	#REF!
TYPE "M" HVAC / MECHANICAL LOADS	#REF!	100%	#REF!
TOTALS		#REF!	#REF!

PHASE A: 3.50 KVA	
PHASE B: 1.70 KVA	
PHASE C: 1.99 KVA	
29.17 MAX AMPS / PHASE	

**NUMBERED SHEET NOTES**

- (E) BRANCH PANEL '3LB' TO REMAIN, RELOCATE (E) 20A, 120V BRANCH CIRCUITS 3LB-4, 5, 7, 9, 11, 13 TO (N) ADJACENT PANEL '3EB', SPLICE AS REQUIRED, SEE PANEL SCHEDULE, PROVIDE UPDATED FULLY TYPED PANEL DIRECTORY TO SHOW ALL (E) LOADS AND SPARE CIRCUITS, TURN OFF SPARE CIRCUIT BREAKERS.
- PROVIDE AND INSTALL (N) BRANCH PANEL '3EB' ON EMERGENCY DISTRIBUTION BRANCH, SEE SINGLE LINE DIAGRAM 2E3.1 AND PANEL SCHEDULE.
- CORE DRILL (E) SLAB AT 3RD FLOOR AND 2ND FLOOR FOR (N) FEEDER DOWN TO 1ST FLOOR (E) PANEL '1EB', SEE E3.2 FOR (E) PANEL LOCATION.
- FOR ALL (E) RECEPTACLES SHOWN ON THIS SHEET, REPLACE (E) P-TOUCH STYLE LABEL WITH (N) TO INDICATE (N) PANEL AND CIRCUIT DESIGNATION (FROM PANEL '3EB' INSTEAD OF '3LB'), ALSO PROVIDE A RED DOT STIKER ON EACH RECEPTACLE TO DESIGNATE BACK-UP POWER CAPABILITY (SIMILAR TO OTHER (E) RECEPTACLES AT THE COUNCIL CHAMBERS AREA).
- (E) RECEPTACLES TO REMAIN, NO CHANGE, SHOWN FOR AV REFERENCE ONLY, SEE SHEET TA4.1 AND TA4.3
- BUSS TAP OR 3-WAY SPLICE (N) FEEDER TO (E) SUPPLY FEEDER IN (E) PANEL '1EB', (E) FEEDER OCCP IS 100A/3P BREAKER AT GENERATOR PANEL 'EDP', SO NO ADDITIONAL OCCP REQUIRED AT TAP.
- PROVIDE AND INSTALL (N) FLUSH RECEPTACLE, CONNECT COMPLETE TO (E) ADJACENT DAIS POWER AS SHOWN, WITH LABELING SIMILAR TO NOTE 4 ABOVE.
- (E) RED DUPLEX RECEPTACLE TO BE REPLACED WITH (N) FLUSH RED QUAD RECEPTACLE IN SAME LOCATION, RECONNECT COMPLETE TO (E) BM CIRCUIT 1EB-14 AND LABEL SIMILAR TO NOTE 4 ABOVE, CUT AND PATCH WALL AS REQUIRED AND LABEL SIMILAR TO NOTE 4 ABOVE.
- PROVIDE AND INSTALL (N) FLUSH RED QUAD RECEPTACLE ADJACENT TO (E) RECEPTACLE LOCATION, CONNECT COMPLETE TO (N) CIRCUIT SHOWN, WITH MC CABLE CONCEALED IN (E) WALL, CUT AND PATCH WALL AS REQUIRED AND LABEL SIMILAR TO NOTE 4 ABOVE.
- PROVIDE AND INSTALL (N) FLUSH DUPLEX RECEPTACLE IN CURVED WALL (+18" AFF), EXTEND (E) CIRCUIT FROM (E) RECEPTACLE LOCATION TO (N) LOCATION SHOWN AND CONNECT COMPLETE, ROUTE ALL (N) CONDUIT AND WIRE (DR MC CABLE) CONCEALED IN (E) CONSTRUCTION, FISH IN (E) CAVITIES OR CUT AND PATCH AS REQUIRED.



**3RD FLOOR PLAN - POWER**  
SCALE: 1/4" = 1'-0"



**PITTSBURGH CITY HALL COUNCIL CHAMBERS - EM POWER & LIGHTING UPGRADE**  
PITTSBURGH, CA

NO.	REVISIONS

PROJECT NO: 221036  
DRAWN BY: LNU/TV  
DRAWING SCALE:

BID DOCUMENTS  
SEPTEMBER 29, 2022

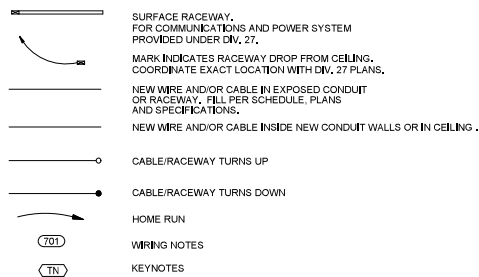
SHEET TITLE  
**3RD FLOOR COUNCIL CHAMBERS FLOOR PLAN - POWER**

SHEET NUMBER  
**E3.1**

## AUDIO VISUAL SYSTEMS GENERAL NOTES

- REFER TO SPECIFICATIONS FOR COMPLETE REQUIREMENTS.
- PROVIDE CONDUIT, BOXES AND FITTINGS SHOWN ON AUDIO VISUAL SYSTEMS (AV) RAWINGS UNDER THE WORK OF SECTION 27 41 03 CONDUITS AND BACKBOXES FOR AUDIO VISUAL SYSTEMS, UNLESS OTHERWISE INDICATED. PROVIDE 1 INCH TRADE SIZE MINIMUM, PROVIDE RACEWAY SIZE AS REQUIRED FOR A MAXIMUM OF 30 PERCENT WIRE FILL.
- PROVIDE FIRESTOPPING UNDER THE WORK OF SECTION 27 41 03.
- NOT USE.
- DEVICE QUANTITIES SHOWN ON FLOOR PLANS AND REFLECTED CEILING PLANS TAKE PRECEDENCE OVER DEVICE QUANTITIES SHOWN ON FUNCTIONAL DIAGRAMS.
- QUANTITIES SHOWN ON FUNCTIONAL DIAGRAMS TAKE PRECEDENCE OVER QUANTITIES SHOWN ON RACK ELEVATIONS.
- QUANTITIES SHOWN ON DEVICE SCHEDULES TAKE PRECEDENCE OVER QUANTITIES SHOWN ON FUNCTIONAL DIAGRAMS, FLOOR PLANS AND REFLECTED CEILING PLANS.
- LOCATIONS SHOWN ON LARGE SCALE DRAWINGS TAKE PRECEDENCE OVER LOCATIONS SHOWN ON SMALL SCALE DRAWINGS.
- NOT USED.
- WIRING FOR THE WORK OF AUDIO VISUAL SYSTEMS IS NOT PERMITTED TO SHARE CONDUIT, SLEEVES OR J-HOOKS WITH WIRING FOR WORK OF COMMUNICATIONS WIRES, CABLES AND RELATED, MAINTAIN AT LEAST 2 INCHES SEPARATION IF RUNNING PARALLEL. MAINTAIN AT LEAST 1 INCH OF SEPARATION VERTICALLY IF CROSSING AT RIGHT ANGLES.

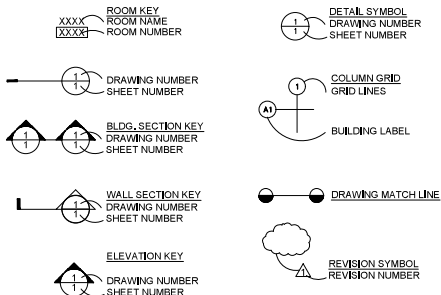
## LEGEND



## ABBREVIATIONS

A.D.A.	AMERICANS WITH DISABILITIES ACT	MMF	MULTI MODE OPTICAL FIBER
A.F.C.	ABOVE FINISHED CEILING	MOD.	MODULAR
A.F.F.	ABOVE FINISHED FLOOR	MPOE	MINIMUM POINT OF ENTRY
ALT.	ALTERNATE	(N)	NEW
A.M.F.F.	ABOVE MEZZANINE FINISHED FLOOR	NEC	NATIONAL ELECTRICAL CODE
BDF	BUILDING DISTRIBUTION FACILITY	N.I.C.	NOT IN CONTRACT
B.F.C.	BELOW FINISHED CEILING	NTS	NOT TO SCALE
BLDG.	BUILDING	O.C.	ON CENTER
B.O.H.	BACK OF HOUSE	O.D.	OUTSIDE DIAMETER
C.	CONDUIT	O.F.E.	OWNER FURNISHED EQUIPMENT
CAT.	CATEGORY	OPP.	OPPOSITE
CBC	CALIFORNIA BUILDING CODE	OSP	OUTSIDE PLANT
CEC	CALIFORNIA ELECTRICAL CODE	PNL	PANEL
COMM.	COMMUNICATIONS	PROJ.	PROJECT
C.L.	CENTERLINE	P.S.R.H.	PROJECT STANDARD RECEPTACLE HEIGHT +18" ATT. U.O.J.N.
C.O.	CONDUIT ONLY	P.S.S.H.	PROJECT STANDARD SWITCH HEIGHT +48" AFF TO C. U.O.J.N.
CONT.	CONTINUATION	RE.	REFER TO
CS	COMMUNICATIONS SYSTEM	REF.	REFERENCE
(D)	DEMOLISH EXISTING	S.A.D.	SEE ARCHITECTURAL DRAWINGS
DED	DEDUCTIVE	S.E.D.	SEE ELECTRICAL DRAWINGS
DI.A.	DIAMETER	S.I.D.	SEE INTERIORS DRAWINGS
DIV	DIVISION	S.M.D.	SEE MECHANICAL DRAWINGS
E.A.	EACH	SIM.	SIMILAR
EIA	ELECTRONIC INDUSTRIES ASSOCIATION	SMF	SINGLE MODE OPTICAL FIBER
ELEV.	ELEVATION	SN	SHEET NOTE
E.O.L.	END OF LINE	SP	SHIELDED PAIR - SEE SPECIFICATIONS
EQPT.	EQUIPMENT	SPEC	SPECIFICATION
FIN	FINISHED	S.R.	SURFACE RACEWAY
FUT	FUTURE	STD	STANDARD
H.R.	HOME RUN	STP	SHIELDED TWISTED PAIR
HT.	HEIGHT	T.C.	TELECOMMUNICATIONS CLOSET
IDF	INTERMEDIATE DISTRIBUTION FACILITY	TEL.	TELEPHONE
J.BOX	JUNCTION BOX	TELCOM	TELECOMMUNICATIONS
LAN	LOCAL AREA NETWORK	TIA	TELECOMMUNICATIONS INDUSTRY ASSOCIATION
MAX.	MAXIMUM	TP	TWISTED PAIR
MDF	MAIN DISTRIBUTION FACILITY	TYP.	TYPICAL
MIN.	MINIMUM	U.O.J.N.	UNLESS OTHERWISE NOTED
		W	WITH
		WP	WEATHERPROOF

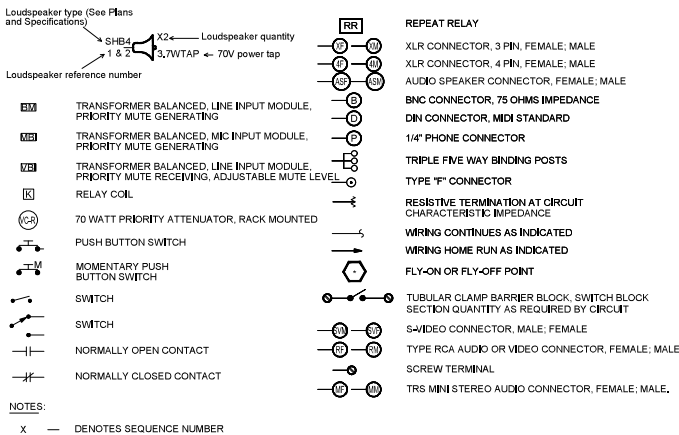
## GENERAL SYMBOLS



## ALS SCHEDULE

COMPLY WITH CBC 11B-219/11B-706 ASSISTIVE-LISTENING SYSTEMS IN ASSEMBLY AREAS. PROVIDE COMPLETE ASSISTIVE-LISTENING SYSTEMS UNDER THE WORK OF SECTION 27 41 16	
1A NUMBER OF PERSONAL RECEIVERS REQUIRED UNDER THE WORK OF SECTION 27 41 16:	TOTAL SEATS
ROOM NAME	
3RD FLOOR LOBBY (A-3, STANDING)	288
COUNCIL CHAMBERS (A-3, AUDIENCE, NON-FIXED SEATING)	216
COUNCIL CHAMBERS (A-3, DISTAFF, FIXED SEATING)	42
TOTAL SEATS AT ASSEMBLY SPACES WITH FIXED SEATS & SOUND SYSTEMS:	558
PROVIDE QUANTITY OF (N) RECEIVERS:	22
PROVIDE QUANTITY OF (N) HEARING-AID COMPATIBLE RECEIVERS:	6
TOTAL RECEIVERS:	22
2 TYPE OF LISTENING SYSTEM: RF	
3 LOCATION: FOR USE ANYWHERE WITHIN THE ASSEMBLY AREAS.	
4 SIGNAGE: PROVIDE ALS SIGNAGE PER CBC 11B	

## AV FUNCTIONALS LEGEND



## JUNCTION BOX SCHEDULE

SYMBOL	H (INCHES)	W (INCHES)	D (INCHES)
J1	6	6	4
J2	8	8	4
J3	12	12	4
J4	12	12	6
J5	12	12	8
J6	16	12	8
J7	18	18	6
J8	20	16	6
J9	20	16	8
J10	20	20	6
J11	20	20	8
J12	24	20	6
J13	24	20	8
J14	24	24	8
J15	30	24	8
J16	30	30	8
J17	36	30	8
J18	36	36	8

<b>SUFFIX:</b>	<b>NOTE</b>
NONE - NEMA 1	ALL JUNCTION BOXES TO BE HINGED TYPE, PROVIDED WITHOUT PRE-PUNCHED KNOCKOUTS, PENETRATIONS IN JUNCTION BOXES SHALL BE CUT OR PUNCHED AS REQUIRED FOR INSTALLATION, PAINT ALL INTERIOR BOXES TO MATCH WALL FINISH, COORDINATE FINISH WITH ARCH. PLANS.
A - NEMA 12	
B - NEMA 3R	
C - NEMA 4	
D - NEMA 4X	



PITTSBURG CITY HALL COUNCIL  
 CHAMBERS  
 AUDIOVISUAL UPGRADES  
 PITTSBURG, CA

REVISIONS	DATE	DESCRIPTION

PROJECT NO:  
DRAWN BY:  
DRAWING SCALE:

BID DOCUMENTS  
SEPTEMBER 29, 2022

SHEET TITLE  
GENERAL NOTES, LEGEND, ABBREVIATIONS AND JBOX SCHEDULE

SHEET NUMBER

TA0.1

SYMBOL	DEVICE	FUNCTION OR SERVICE	LOCATION	WORK OF	ROUGH-IN	RACEWAY	ELEVATION	CABLE FILL & HOMERUN DESTINATION, U.O.N.	FINISH	WEIGHT, LB	DETAIL SHEET(S)
	ANTENNA/EMITTER FOR RF ASSISTIVE LISTENING SYSTEM	AUDIO-VISUAL SYSTEMS	CEILING	27 41 16	1-GANG W/ RING	R6	ATTACHED TO (E) TRUSS	PER FUNCTIONAL AND AS NOTED	BLACK	1	N/A
	CONTROL BUTTON PANEL	AUDIO-VISUAL SYSTEMS	WALL	27 41 16	1-GANG W/ RING	R6	+42" A.F.F. TO C.L., U.O.N.	PER FUNCTIONAL AND AS NOTED	WHITE	1	N/A
	WALL-MOUNTED CONTROL PANELS, TOUCH, 10" DIAGONAL	AUDIO-VISUAL SYSTEMS	INDICATED	27 41 16	N/A	N/A	TABLE TOP	PER FUNCTIONAL AND AS NOTED	WHITE	2	N/A
	FLAT PANEL ROUGH-IN BOX	AUDIO VISUAL SYSTEMS	FLUSH IN WALL	27 41 03	FPWB		1-1/2" C. FROM EA. OF (2) LOW VOLTAGE COMPARTMENTS TO ABOVE ACCESSIBLE CEILING	PER FUNCTIONAL	WHITE	N/A	N/A
	GOOSENECK MICROPHONE, TOPSET, WITH PUSHBUTTON CONTROL FOR LATCHING PUSH-TO-TALK	AUDIO VISUAL SYSTEMS	WORK SURFACE	27 41 16	PROVIDE 2" DIA. GROMMET FOR CABLE PASSTHRU IN WORK SURFACE.	N/A	WORK SURFACE	PER FUNCTIONAL AND AS NOTED	BLACK	1	N/A
	FLAT DISPLAY PANEL, 82" DIAGONAL, 16:9 ASPECT RATIO	AUDIO-VISUAL SYSTEMS	FPWB IS FLUSH MTD WALL, PANEL IS SURFACE MOUNTED.	27 41 16	FPWB	(SEE FPWB)	CENTERLINE OF DISPLAY AT 60" A,F,F.	PER FUNCTIONAL	BLACK	165	N/A
	FLAT DISPLAY PANEL, 86" DIAGONAL, 16:9 ASPECT RATIO	AUDIO-VISUAL SYSTEMS	FPWB IS FLUSH MTD WALL, PANEL IS SURFACE MOUNTED.	27 41 16	FPWB	(SEE FPWB)	CENTERLINE OF DISPLAY AT 60" A,F,F.	PER FUNCTIONAL	BLACK	175	N/A
	FLAT DISPLAY PANEL, 23" DIAGONAL, 16:9 ASPECT RATIO	AUDIO-VISUAL SYSTEMS	FPWB IS FLUSH MTD WALL, PANEL IS SURFACE MOUNTED.	27 41 16	FPWB	(SEE FPWB)	CENTERLINE OF DISPLAY AT 60" A,F,F.	PER FUNCTIONAL	BLACK	20	N/A
	FLAT DISPLAY PANEL, 32" DIAGONAL, 16:9 ASPECT RATIO	AUDIO-VISUAL SYSTEMS	FPWB IS FLUSH MTD WALL, PANEL IS SURFACE MOUNTED.	27 41 16	FPWB	(SEE FPWB)	CENTERLINE OF DISPLAY AT 60" A,F,F.	PER FUNCTIONAL	BLACK	25	N/A
	HDMI INPUT PLATE	AUDIO-VISUAL SYSTEMS	INDICATED	27 41 16	1 GANG BACKBOX WITH 1 GANG RING, 2-3/4" DEEP	R6	+42" A.F.F. TO C.L., U.O.N.	PER FUNCTIONAL AND AS NOTED	WHITE	N/A	N/A
	HDMI OUTPUT PLATE	AUDIO-VISUAL SYSTEMS	INDICATED	27 41 16	1 GANG BACKBOX WITH 1 GANG RING, 2-3/4" DEEP	R6	+42" A.F.F. TO C.L., U.O.N.	PER FUNCTIONAL AND AS NOTED	WHITE	N/A	N/A
	INTERPRETER STATION AUDIO PLATE	AUDIO-VISUAL SYSTEMS	INDICATED	27 41 16	1 GANG BACKBOX WITH 1 GANG RING, 2-3/4" DEEP	R6	+18" A.F.F. TO C.L., U.O.N.	PER FUNCTIONAL AND AS NOTED	WHITE	N/A	N/A
	CAMERA CONTROL CONTROL PLATE	AUDIO-VISUAL SYSTEMS	INDICATED	27 41 16	1 GANG BACKBOX WITH 1 GANG RING, 2-3/4" DEEP	R6	+18" A.F.F. TO C.L., U.O.N.	PER FUNCTIONAL AND AS NOTED	WHITE	N/A	N/A
	BROADCAST CONTROL PLATE	AUDIO-VISUAL SYSTEMS	INDICATED	27 41 16	1 GANG BACKBOX WITH 1 GANG RING, 2-3/4" DEEP	R6	+18" A.F.F. TO C.L., U.O.N.	PER FUNCTIONAL AND AS NOTED	WHITE	N/A	N/A
	PAN-TILT-ZOOM VIDEO CAMERA	AUDIO-VISUAL SYSTEMS	INDICATED	27 41 16	1 GANG BACKBOX WITH 1 GANG RING, 2-1/8" DEEP	R6	+84" A.F.F. TO C.L., U.O.N.	PER FUNCTIONAL	WHITE	12	N/A
	(E) FULL HEIGHT RACK, SEISMIC RATED	AUDIO-VISUAL SYSTEMS	FLOOR	27 41 08	(E)	(E)	FLOOR MOUNTED	PER FUNCTIONAL	BLACK	350	N/A
	LOUDSPEAKER, CEILING, TRUSS/BEAM MOUNT	AUDIO-VISUAL SYSTEMS	CEILING	27 41 16	(E)	(E)	(E) TRUSS	PER FUNCTIONAL AND AS NOTED	BLACK	10	N/A
	LOUDSPEAKER, SOUNDBAR TYPE	AUDIO-VISUAL SYSTEMS	ATTACHED TO DISPLAY	27 41 16	N/A	N/A	ATTACHED TO DISPLAY	PER FUNCTIONAL	BLACK	12	N/A
	LOUDSPEAKER, WALL MOUNTED	AUDIO-VISUAL SYSTEMS	MOUNTED TO WALL	27 41 16	(E)	(E)	INDICATED	PER FUNCTIONAL AND AS NOTED	BLACK	20	N/A
	WIRELESS MICROPHONE ANTENNA	AUDIO-VISUAL SYSTEMS	CEILING	27 41 16	1-GANG W/ PLATE	R6, LR14 (SEE RCP)	CEILING	AS SCHEDULED	WHITE	1	N/A
	WIRELESS GOOSENECK MICROPHONE, TOPSET, WITH PUSHBUTTON CONTROL FOR LATCHING PUSH-TO-TALK	AUDIO VISUAL SYSTEMS	WORK SURFACE	27 41 16	N/A	N/A	WORK SURFACE	N/A	BLACK	1	N/A
	WALL SLEEVE/CONDUIT	PATHWAY	INDICATED	27 41 03	N/A	R11					

NOTE NO. DEVICE NOTES

- WORK OF NOTES
- W01 PROVIDE CABLING AND ROUGH-IN UNDER WORK OF PROJECT – LIGHTING FIXTURE PROVIDED BY OWNER'S CONTRACTOR (N.I.C.).
- LOCATION & ROUGH-IN NOTES
- LR11 INSTALLED ASSEMBLY, INCLUDING MONITOR SHALL NOT PROJECT MORE THAN 4" FROM FACE OF WALL, IF LEADING EDGE 27" TO 80" AFF
- LR12 MATCH PROJECT SWITCH HEIGHT
- LR13 4S BOX W/ 1 GANG RING BLANK COVER PLATE
- LR14 CONCEAL CONDUITS AND BACKBOXES FOR AUDIOVISUAL DEVICES IN THE ROOF INSULATION LAYER. COORDINATE PRECISE LOCATION OF BOXES WITH ARCHITECTURAL REFLECTED CEILING PLAN, ROUTE CONDUITS ORTHOGONAL TO BUILDING GRID LINES, UTILIZE GRC CONDUIT AND CAST OUTLET BOXES OR OTHER APPROVED METHOD TO PROVIDE PHYSICAL PROTECTION OF CONCEALED RACEWAYS. PROVIDE FLUSH (RECESSED), CEILING ACCESSIBLE JUNCTION BOXES AS REQUIRED.
- LR15 NOT USED
- LR16 NOT USED
- LR17 MANUFACTURER'S VENTED BACKBOX.
- LR18 NOT USED

- LR19 4S BOX, 2-1/8" DEEP MIN., W/ 1 GANG RING WITH LOCKING HINGED COVER PLATE (FSR WB-MR2G OR EQUAL).
- LR110 NOT USED
- LR111 PROVIDE BACKING AND SUPPORT FOR 5 POUND DEVICE.
- LR112 PROVIDE DEVICE COMPLETE WITH BACKBOX, TILE SUPPORT RAILS AND CEILING CUTOUT TEMPLATE, COMPLY WITH SECTION 09 50 11 ACOUSTICAL PANEL CEILINGS.
- LR113 PROVIDE BACKING IN WALL SUITABLE TO SUPPORT A 20 POUND DEVICE WITH A LOAD CENTROID 18 INCHES FROM THE FACE OF THE WALL.
- LR114 PROVIDE BACKING IN WALL SUITABLE TO SUPPORT A 200 POUND DEVICE WITH A LOAD CENTROID 8 INCHES FROM THE FACE OF THE WALL.
- LR115 AS DETAILED AND/OR SCHEDULED ON THE ARCHITECTURAL DRAWINGS.

RACEWAY NOTES

- R1 (4) 2" C, TO ABOVE ACCESSIBLE CEILING. IN ADDITION, PROVIDE END-TO-END CONDUIT FOR FIRE ALERT SYSTEM LOUDSPEAKER DEVICES
- R2 3/4" C, END-TO-END, H.R. TO FIRE ALERT SYSTEM HEAD-END IN IDF.
- R3 NOT USED
- R4 AS DETAILED AND/OR SCHEDULED
- R5 3/4" C, H.R. TO ACCESSIBLE CEILING OR FLOOR, OR TO SERVING BDF, IDF OR EQUIPMENT ROOM, U.O.N.
- R6 1" C, H.R. TO ACCESSIBLE CEILING OR FLOOR, OR TO SERVING BDF, IDF OR EQUIPMENT ROOM, U.O.N.
- R7 1-1/4" C, H.R. TO ACCESSIBLE CEILING OR FLOOR, OR TO SERVING BDF, IDF OR EQUIPMENT ROOM, U.O.N.
- R8 NOT USED
- R9 AT ACCESSIBLE CEILING, PROVIDE ABOVE CEILING PATHWAY USING CABLE HOOKS, WHERE MOUNTED IN GYP CEILING, EXTEND 3/4" C, TO ACCESSIBLE CEILING.
- R10 2 1/4" C TO 4 GANG COMPARTMENT, 1 - 1" TO 1 GANG COMPARTMENT, STUBBED TO ACCESSIBLE CEILING OR FLOOR EXTEND TO SERVER ROOM USING BASKET TRAY. SEE ELECTRICAL DRAWINGS FOR ELECTRICAL ROUGH-IN.

- R11 UNLESS OTHERWISE SHOWN, PROVIDE 1.5" EMT SLEEVE, WITH INSULATED THROAT BUSHING AT EACH END, STUBBED OUT 4 INCHES FROM FACE OF WALL, AT ELEVATION APPROXIMATELY 6 INCHES ABOVE ACCESSIBLE CEILING. INSTALL SLEEVE IN AN ACCESSIBLE LOCATION AS DEFINED IN CALIFORNIA ELECTRICAL CODE, ARTICLE 100 DEFINITIONS, PROVIDE FIRESTOPPING UNDER WORK OF SECTION 27 41 03, BOND TO GROUND, COMPLY WITH DIVISION 26 AND SECTION 27 41 01 GROUNDING.
- R12 4 1-1/4" C TO 6 GANG COMPARTMENT, 1 - 1.25" TO EA. 1 GANG COMPARTMENT, STUBBED TO ACCESSIBLE CEILING OR FLOOR, EXTEND TO SERVER ROOM IN BASKET TRAY. SEE ELECTRICAL DRAWINGS FOR ELECTRICAL ROUGH-IN TO 3 GANG COMPARTMENT.
- ACCESSIBLE CEILING IS A T-BAR OR SIMILAR GRID BASED, PANELIZED REMOVEABLE CEILING MEETING THE DEFINITION FOR ACCESSIBLE WIRING METHODS IN ARTICLE 100 OF THE CALIFORNIA ELECTRICAL CODE.



PITTSBURG CITY HALL COUNCIL CHAMBERS AUDIOVISUAL UPGRADES  
PITTSBURG, CA

NO.	DESCRIPTION

PROJECT NO:  
DRAWN BY:  
DRAWING SCALE:

BID DOCUMENTS  
SEPTEMBER 29, 2022  
SHEET TITLE

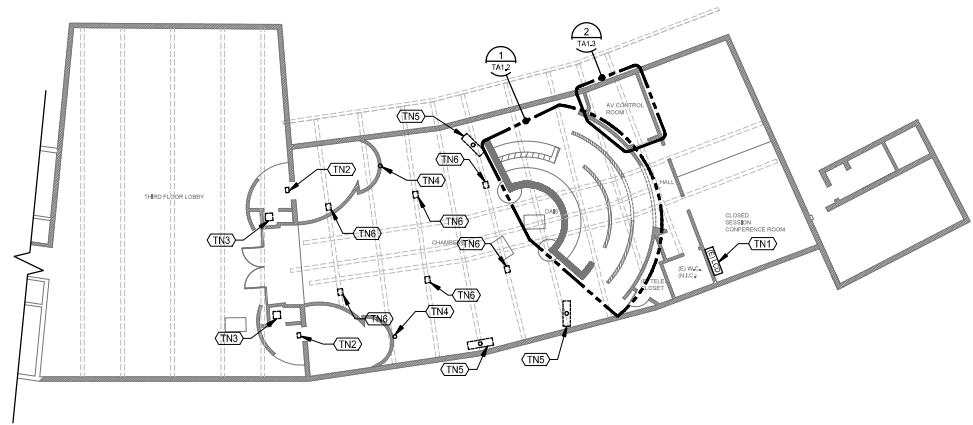
SYMBOL SCHEDULE

SHEET NUMBER

TA0.2

**KEYNOTES**

- TN COMMUNICATIONS SYSTEMS: WORK OF DIVISION 27.
- (TN1) (E) WALL-MOUNTED DISPLAY AND AUDIOVISUAL EQUIPMENT TO REMAIN.
- (TN2) (E) WALL-MOUNTED LOUDSPEAKER AND SPEAKER WIRE TO BE REMOVED. RE-USE BACKBOX AND PATHWAY. COORDINATE DISPOSITION/DISPOSAL WITH OWNER REPRESENTATIVE.
- (TN3) (E) PORTABLE LOUDSPEAKER TO BE REMOVED. COORDINATE DISPOSITION/DISPOSAL WITH OWNER REPRESENTATIVE.
- (TN4) (E) PTZ CAMERA AND CABLING TO BE REMOVED. RE-USE BACKBOX, PATHWAY AND MOUNT. COORDINATE DISPOSITION/DISPOSAL WITH OWNER REPRESENTATIVE.
- (TN5) (E) FLAT PANEL DISPLAY AND ASSOCIATED CABLING/BALUNS TO BE REMOVED; (E) TRUSS-ATTACHED POLE MOUNT TO REMAIN. COORDINATE DISPOSITION/DISPOSAL WITH OWNER REPRESENTATIVE.
- (TN6) (E) TRUSS-MOUNTED LOUDSPEAKER TO BE REMOVED. RE-USE BACKBOX/PATHWAY/MOUNT. COORDINATE DISPOSITION/DISPOSAL WITH OWNER REPRESENTATIVE.



**1 THIRD FLOOR (EAST) OVERALL DEMO PLAN**  
 3/32"=1'-0"



**PITTSBURG CITY HALL COUNCIL CHAMBERS AUDIOVISUAL UPGRADES**  
 PITTSBURG, CA

REVISIONS

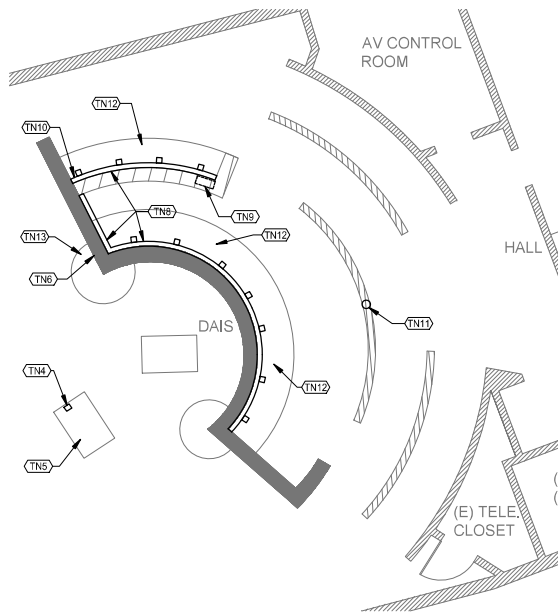
PROJECT NO: \_\_\_\_\_  
 DRAWN BY: \_\_\_\_\_  
 DRAWING SCALE: \_\_\_\_\_

BID DOCUMENTS  
 SEPTEMBER 29, 2022  
 SHEET TITLE

THIRD FLOOR (EAST)  
 OVERALL DEMO PLAN

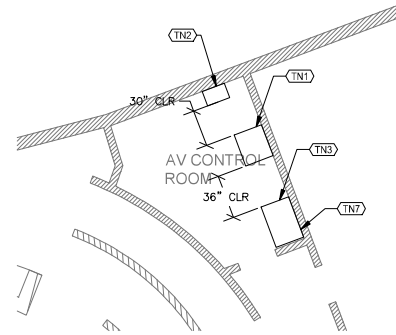
SHEET NUMBER  
 TA1.1





1 DAIS DEMO ENLARGED PLAN

1/4"=1'-0" NORTH



2 AUDIOVISUAL CONTROL ROOM DEMO ENLARGED PLAN

1/4"=1'-0" NORTH

**KEYNOTES**

- TN COMMUNICATIONS SYSTEMS: WORK OF DIVISION 27.
- (TN1) (E) WALL-MOUNT RADIO RACK TO REMAIN (N.I.C.)
- (TN2) (E) FULL-HEIGHT AV RACK TO REMAIN. SEE TA7.4 FOR DISPOSITION OF (E) EQUIPMENT.
- (TN3) (E) WORK SURFACE TO REMAIN.
- (TN4) (E) AV PAV/DATA POKE-THRU TO REMAIN. PROTECT IN PLACE. REMOVE UNUSED AUDIOVISUAL CABLING.
- (TN5) (E) REPOSITIONABLE LECTERN AND ASSOCIATED CABLING TO BE REMOVED, COORDINATE DISPOSITION/DISPOSAL WITH OWNER REPRESENTATIVE.
- (TN6) (E) 1G MEDIA PORT, REMOVE RECEIVER/BALUN AND CABLING. PROTECT BACKBOX IN PLACE.
- (TN7) (E) TABLE-TOP (E) CAMERA CONTROLLER AND ASSOCIATED CABLING TO BE REMOVED. COORDINATE DISPOSITION/DISPOSAL WITH OWNER REPRESENTATIVE. (E) MONITORS AND KEYBOARD TO REMAIN.
- (TN8) (E) AMX CONTROL PORTS, SURFACE RACEWAY, AMX CONTROL BOX, HDMI SPLITTERS AND ASSOCIATED CABLING TO BE REMOVED. COORDINATE DISPOSITION/DISPOSAL W/ OWNER REPRESENTATIVE. PATCH AND REPAIR WALL AS REQ'D.
- (TN9) (E) 12X18 RECESSED PULLBOX TO REMAIN. REMOVE ALL UNUSED LOW-VOLTAGE CABLING.
- (TN10) (E) CASSETTE RECORDER AND ASSOCIATED CABLING TO BE REMOVED, COORDINATE DISPOSITION/DISPOSAL W/ OWNER REPRESENTATIVE.
- (TN11) (E) PTZ CAMERA AND ASSOCIATED CABLING TO BE REMOVED, COORDINATE DISPOSITION/DISPOSAL W/ OWNER REPRESENTATIVE.
- (TN12) (E) GOOSENECK MICROPHONES AND ASSOCIATED CABLING TO BE REMOVED, COORDINATE DISPOSITION/DISPOSAL W/ OWNER REPRESENTATIVE.
- (TN13) (E) ASSISTIVE LISTENING SIGN TO REMAIN.



**PITTSBURG CITY HALL COUNCIL CHAMBERS AUDIOVISUAL UPGRADES**  
PITTSBURG, CA

REVISIONS

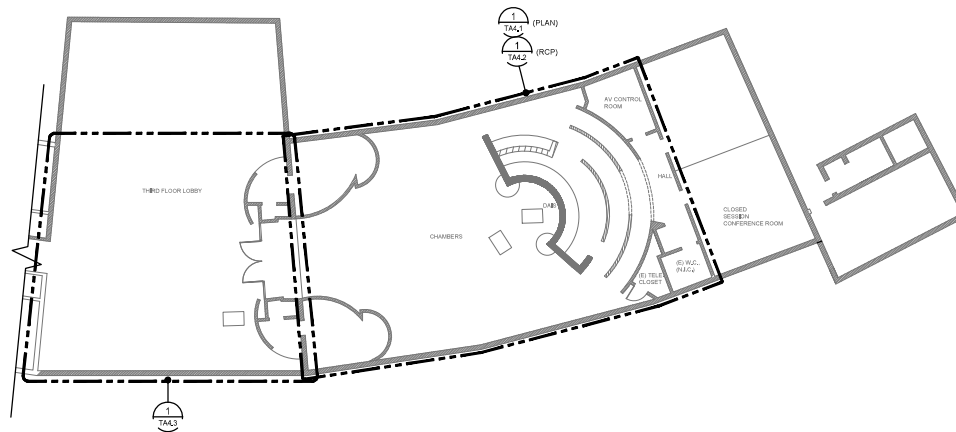
NO.	DESCRIPTION


PROJECT NO: \_\_\_\_\_  
DRAWN BY: \_\_\_\_\_  
DRAWING SCALE: \_\_\_\_\_

BID DOCUMENTS  
SEPTEMBER 29, 2022

SHEET TITLE  
AUDIOVISUAL  
DAIS DEMO AND CONTROL  
ROOM ENLARGED PLANS

SHEET NUMBER  
TA1.2



**1 THIRD FLOOR (EAST) OVERALL PLAN**  
 3/32"=1'-0" 



**PITTSBURG CITY HALL COUNCIL  
 CHAMBERS  
 AUDIOVISUAL UPGRADES**  
 PITTSBURG, CA

NO.	DATE	REVISIONS

PROJECT NO.: \_\_\_\_\_  
 DRAWN BY: \_\_\_\_\_  
 DRAWING SCALE: \_\_\_\_\_

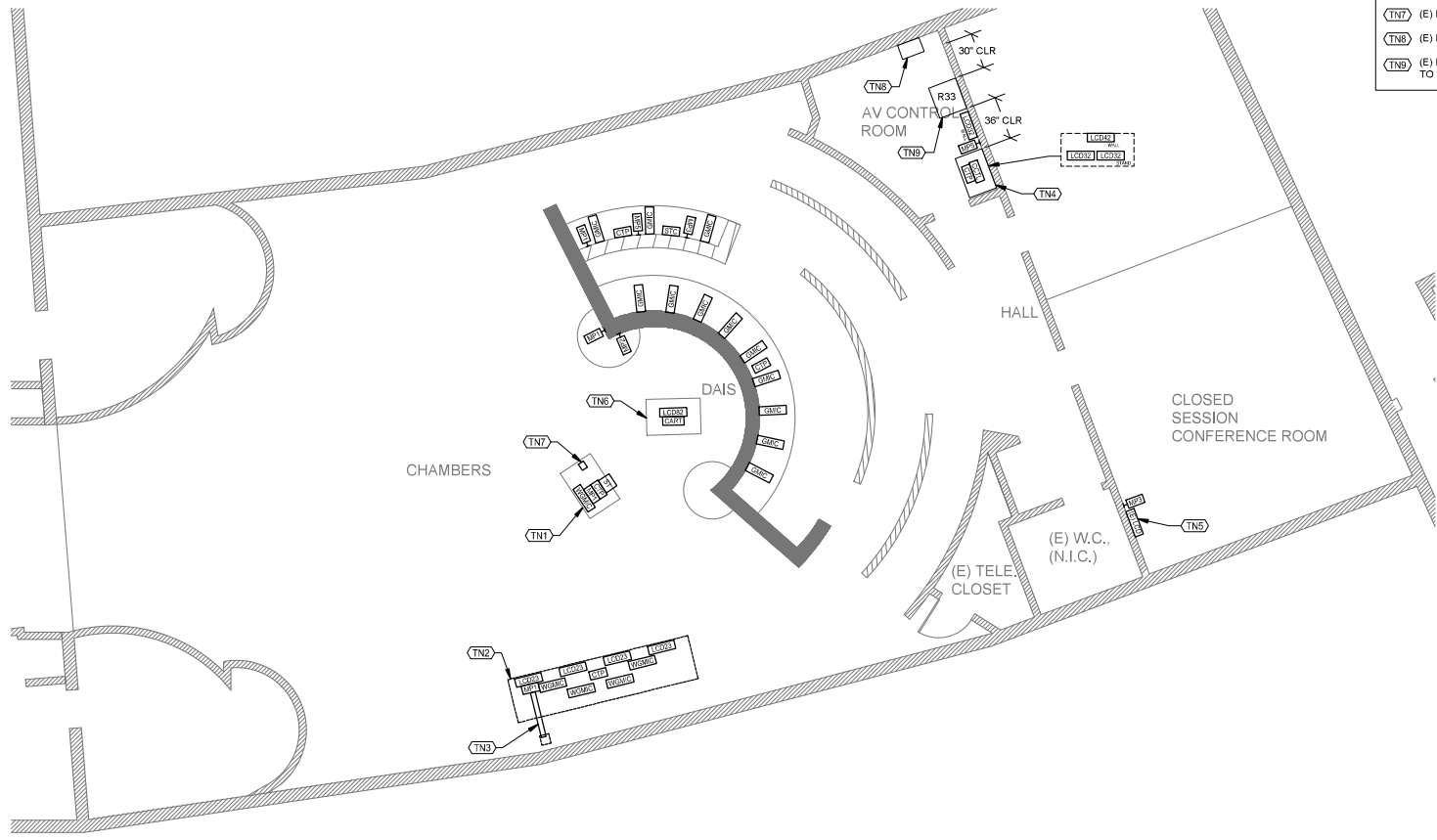
**BID DOCUMENTS**  
**SEPTEMBER 29, 2022**

SHEET TITLE  
 THIRD FLOOR (EAST)  
 OVERALL PLAN

SHEET NUMBER  
 TA2.1

**KEYNOTES**

- TN COMMUNICATIONS SYSTEMS- WORK OF DIVISION 27.
- (TN1) (N) REPOSITIONABLE PRESENTATION LECTERN.
- (TN2) (E) REPOSITIONABLE STAFF TABLES.
- (TN3) (N) ACCESSIBLE OVER FLOOR RACEWAY.
- (TN4) (E) AV CONTROL ROOM WORK SURFACE.
- (TN5) LOCATE (N) AV RECEIVER BEHIND (E) DISPLAY, REFER TO FUNCTIONAL DIAGRAM.
- (TN6) REPOSITIONABLE FLAT PANEL DISPLAYCART.
- (TN7) (E) FLOOR MONUMENT.
- (TN8) (E) RADIO RACK TO REMAIN, N.I.C.
- (TN9) (E) FULL-HEIGHT 4-POST SEISMIC EQUIPMENT RACK TO REMAIN.



**1 ENLARGED PLAN** 1/4"=1'-0" NORTH



**PITTSBURG CITY HALL COUNCIL CHAMBERS AUDIOVISUAL UPGRADES**  
PITTSBURG, CA

REVISIONS

NO.	DATE	DESCRIPTION

PROJECT NO.:  
DRAWN BY:  
DRAWING SCALE:

BID DOCUMENTS  
SEPTEMBER 29, 2022  
SHEET TITLE

ENLARGED PLAN

SHEET NUMBER  
**TA4.1**



- KEYNOTES**
- TN COMMUNICATIONS SYSTEMS: WORK OF DIVISION 27.
  - (TN1) (N) OVERHEAD DISPLAY. SECURE TO (E) POLE-TRUSS MOUNT HARDWARE. BOTTOM OF DISPLAY AT MIN. +80' A.F.F. U.O.N. TYP.
  - (TN2) (N) PTZ CAMERA AT EXISTING LOCATION. REUSE (E) PATHWAY.
  - (TN3) H.R. TO RACK R33, AV CONTROL ROOM.
  - (TN4) (N) PTZ CAMERA AT FACE OF (E) GYP. SOFFIT. SEE 17A4.6.
  - (TN5) PAINT ALL EXPOSED METAL CONDUIT AND ENCLOSURES TO MATCH ADJACENT ASSEMBLY/STRUCTURE. SUBMIT PAINT SAMPLE FOR REVIEW AND ACCEPTANCE BY OWNER PRIOR TO PAINTING.

1 ENLARGED RCP 1/4"=1'-0" NORTH



**PITTSBURG CITY HALL COUNCIL CHAMBERS AUDIOVISUAL UPGRADES**  
 PITTSBURG, CA

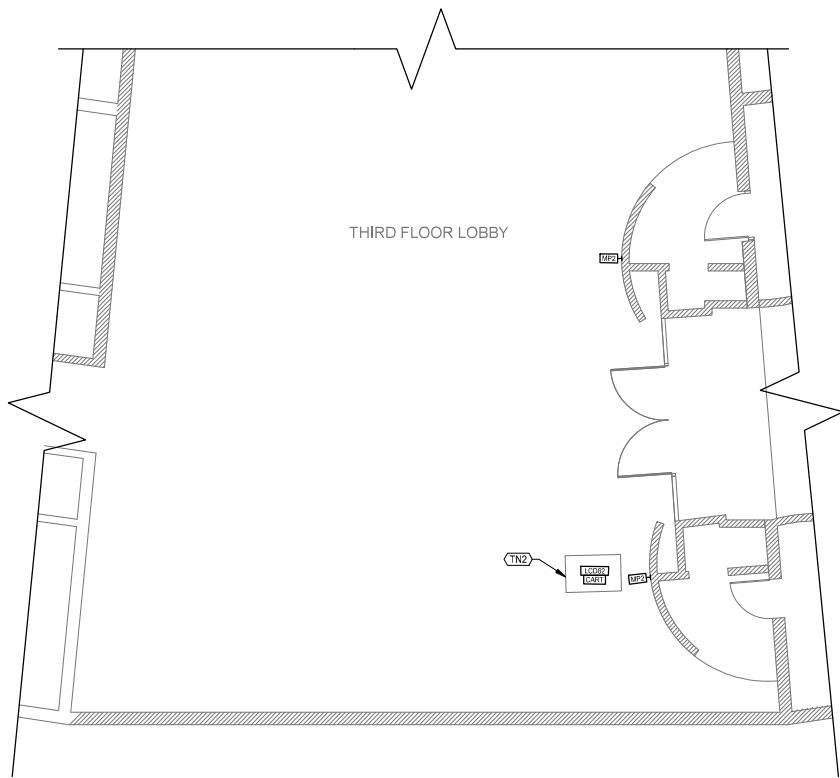
REVISIONS

NO.	DATE	DESCRIPTION

PROJECT NO. \_\_\_\_\_  
 DRAWN BY: \_\_\_\_\_  
 DRAWING SCALE: \_\_\_\_\_

BID DOCUMENTS  
 SEPTEMBER 29, 2022  
 SHEET TITLE  
 ENLARGED RCP  
 SHEET NUMBER  
 TA4.2

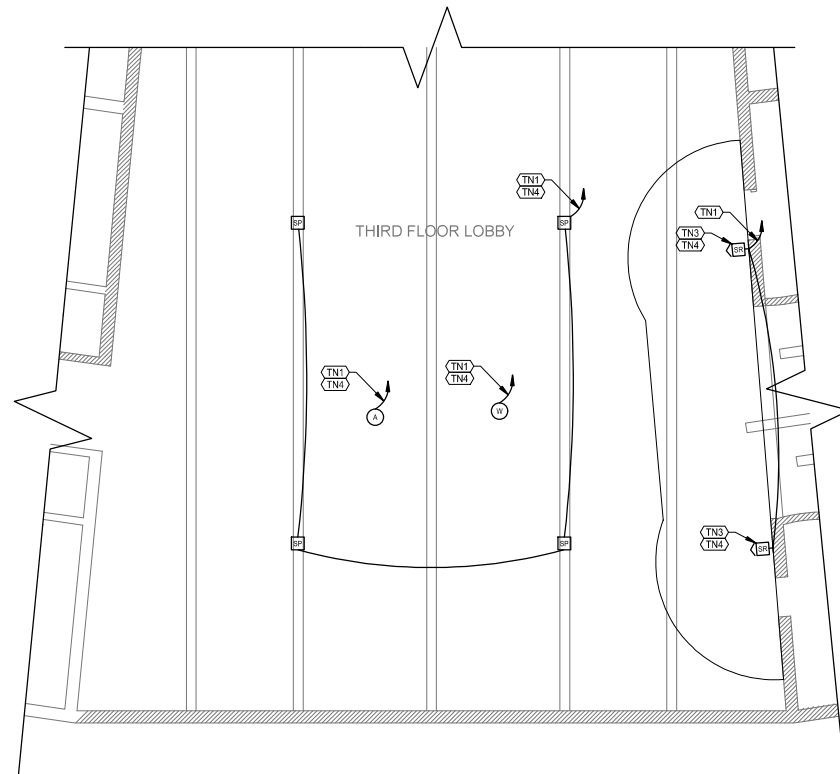




**1 THIRD FLOOR LOBBY ENLARGED PLAN**  
1/4"=1'-0" NORTH

**KEYNOTES**

- TN COMMUNICATIONS SYSTEMS: WORK OF DIVISION 27.
- (TN1) H.R. TO RACK R33 IN AV CONTROL ROOM.
- (TN2) REPOSITIONABLE FLAT PANEL DISPLAY/CART.
- (TN3) (N) WALL-MOUNTED LOUDSPEAKER, REUSE EXISTING BACKBOX AND PATHWAY, TYP.
- (TN4) PAINT ALL EXPOSED METAL CONDUIT AND ENCLOSURES TO MATCH ADJACENT ASSEMBLY/STRUCTURE. SUBMIT PAINT SAMPLE FOR REVIEW AND ACCEPTANCE BY OWNER PRIOR TO PAINTING.



**2 THIRD FLOOR LOBBY ENLARGED RCP**  
1/4"=1'-0" NORTH



**PITTSBURG CITY HALL COUNCIL CHAMBERS AUDIOVISUAL UPGRADES**  
PITTSBURG, CA

NO.	DATE	DESCRIPTION

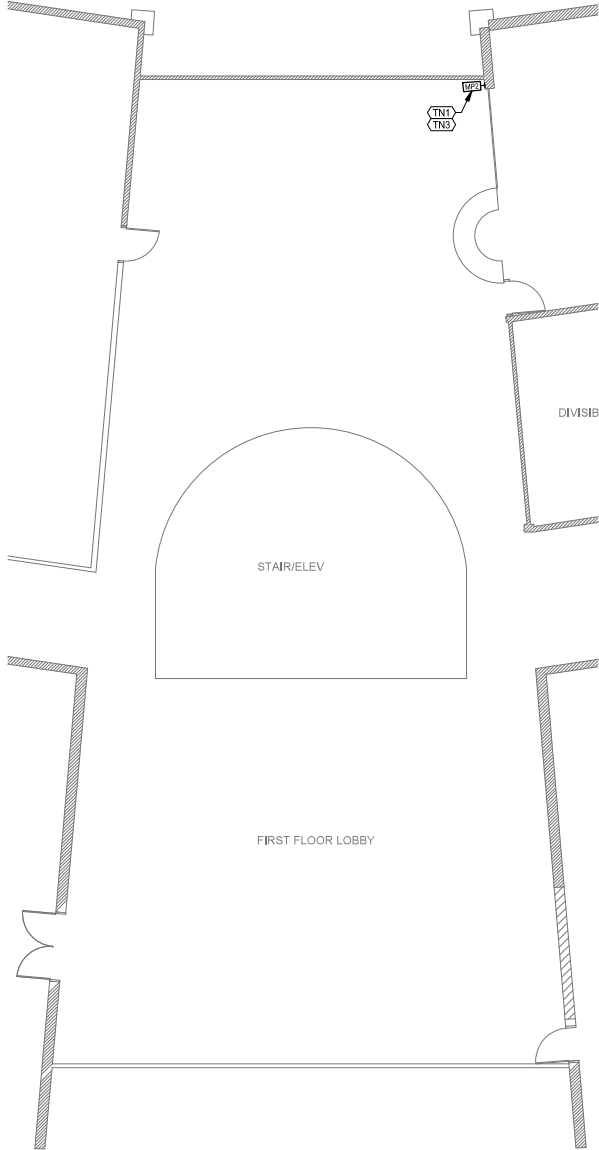
PROJECT NO: \_\_\_\_\_  
DRAWN BY: \_\_\_\_\_  
DRAWING SCALE: \_\_\_\_\_

BID DOCUMENTS  
SEPTEMBER 29, 2022  
SHEET TITLE

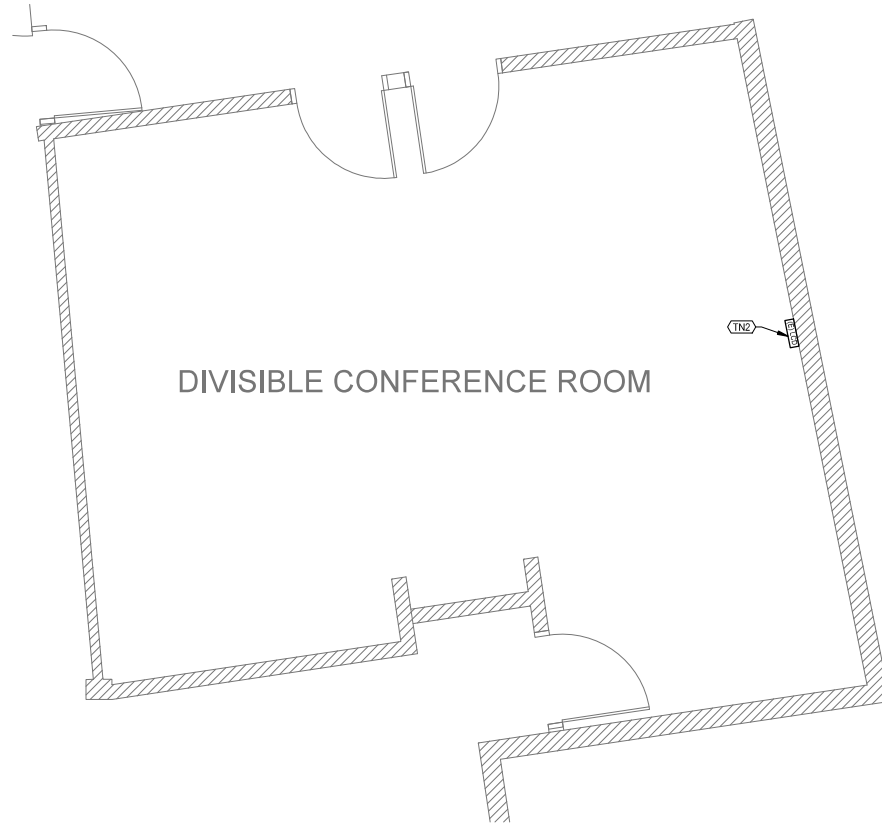
THIRD FLOOR LOBBY ENLARGED PLAN & RCP

SHEET NUMBER

TA4.3



**1 FIRST FLOOR LOBBY ENLARGED PLAN** NORTH  
3/16"=1'-0"



**2 FIRST FLOOR CONFERENCE ROOM ENLARGED PLAN** NORTH  
1/2"=1'-0"

- KEYNOTES**
- TN COMMUNICATIONS SYSTEMS: WORK OF DIVISION 27.
  - (TN1) MEDIA PORT: SEE FUNCTIONAL DIAGRAM. PROVIDE SURFACE-MOUNT BACKBOX AT MULLION W/ LOCKING TAMPER-PROOF COVER.
  - (TN2) LOCATE (N) MEDIA RECEIVER BEHIND (E) DISPLAY. PROVIDE HDMI OUTPUT FROM RECEIVER TO SPARE HDMI INPUT ON (E) DISPLAY. REFER TO FUNCTIONAL DIAGRAM, SHEET TA7.xx.
  - (TN3) PAINT ALL EXPOSED METAL CONDUIT AND ENCLOSURES TO MATCH ADJACENT ASSEMBLY/STRUCTURE. SUBMIT PAINT SAMPLE FOR REVIEW AND ACCEPTANCE BY OWNER PRIOR TO PAINTING.



**PITTSBURG CITY HALL COUNCIL CHAMBERS AUDIOVISUAL UPGRADES**  
 PITTSBURG, CA

REVISIONS

NO.	DESCRIPTION

PROJECT NO: \_\_\_\_\_  
 DRAWN BY: \_\_\_\_\_  
 DRAWING SCALE: \_\_\_\_\_

**BID DOCUMENTS**  
**SEPTEMBER 29, 2022**

SHEET TITLE  
**FIRST FLOOR ENLARGED PLANS**

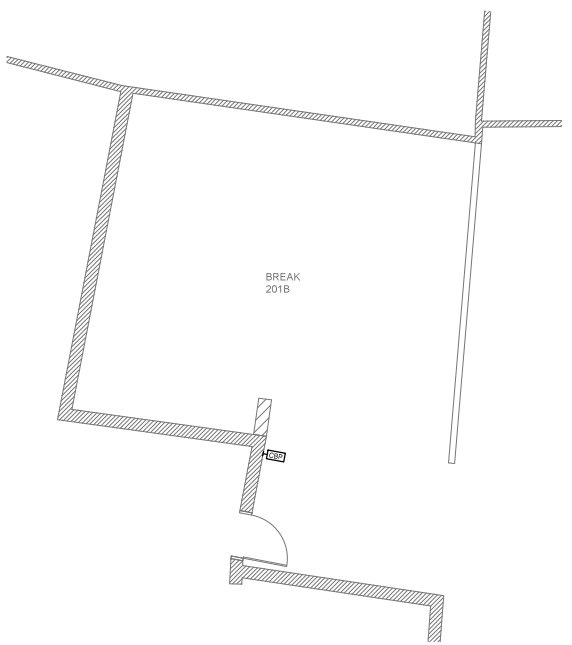
SHEET NUMBER  
**TA4.4**

**KEYNOTES**

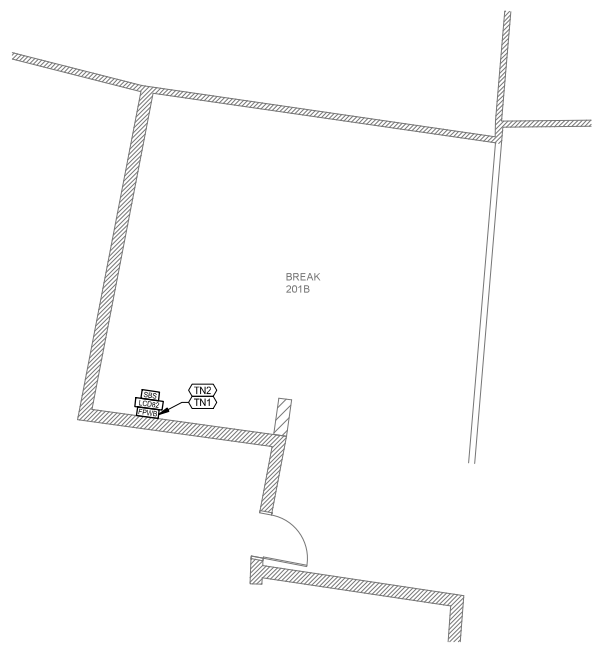
TN COMMUNICATIONS SYSTEMS: WORK OF DIVISION 27.

(TN1) +120" A.F.F. TO CL OF FPWB AND DISPLAY.

(TN2) PAINT ALL EXPOSED METAL CONDUIT AND ENCLOSURES TO MATCH ADJACENT ASSEMBLY/STRUCTURE. SUBMIT PAINT SAMPLE FOR REVIEW AND ACCEPTANCE BY OWNER PRIOR TO PAINTING.



1 SECOND FLOOR BREAK ROOM ENLARGED PLAN 1/4"=1'-0" NORTH



2 SECOND FLOOR BREAK ROOM ENLARGED RCP 1/4"=1'-0" NORTH



PITTSBURG CITY HALL COUNCIL  
CHAMBERS  
AUDIOVISUAL UPGRADES  
PITTSBURG, CA

REVISIONS

NO.	DESCRIPTION

PROJECT NO: \_\_\_\_\_  
DRAWN BY: \_\_\_\_\_  
DRAWING SCALE: \_\_\_\_\_

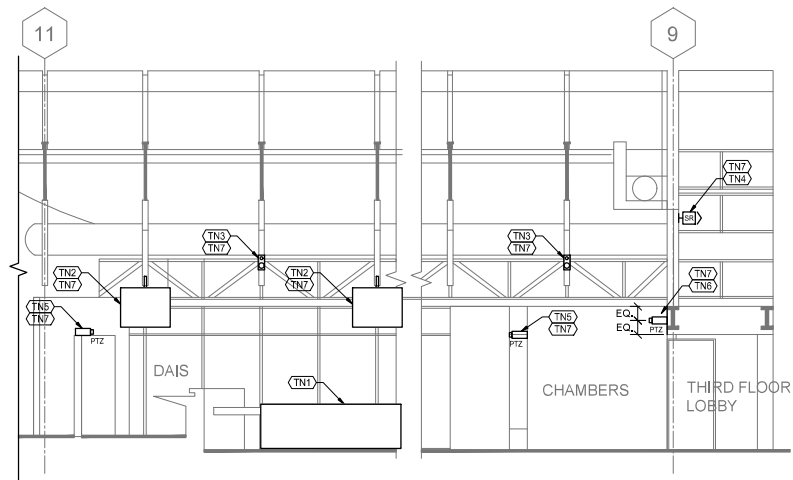
BID DOCUMENTS  
SEPTEMBER 29, 2022

SHEET TITLE  
SECOND FLOOR  
BREAK ROOM ENLARGED  
PLAN AND RCP

SHEET NUMBER  
TA45

**KEYNOTES**

- TN COMMUNICATIONS SYSTEMS: WORK OF DIVISION 27.
- (TN1) (E) REPOSITIONABLE STAFF TABLES, SEE DEVICE PLAN.
- (TN2) (N) DISPLAY, REUSE (E) POLE-MOUNT AT TRUSS, SEE DEVICE RCP.
- (TN3) (N) POLE/TRUSS MOUNTED LOUDSPEAKER, SEE DEVICE RCP.
- (TN4) (N) WALL-MOUNTED LOUDSPEAKER AT (E) LOCATION, REUSE (E) PATHWAY.
- (TN5) (N) PTZ CAMERA AT (E) LOCATION, REUSE (E) PATHWAY.
- (TN6) PTZ CAMERA AT GYP, SOFFIT OVER ENTRY, TYP. FOR (2) LOCATIONS.
- (TN7) PAINT ALL EXPOSED METAL CONDUIT AND ENCLOSURES TO MATCH ADJACENT ASSEMBLY/STRUCTURE. SUBMIT PAINT SAMPLE FOR REVIEW AND ACCEPTANCE BY OWNER PRIOR TO PAINTING.



**1 CHAMBERS INTERIOR ELEVATION - SOUTH**  
1/4"=1'-0"



**PITTSBURG CITY HALL COUNCIL  
CHAMBERS  
AUDIOVISUAL UPGRADES**  
PITTSBURG, CA

REVISIONS

PROJECT NO: \_\_\_\_\_  
DRAWN BY: \_\_\_\_\_  
DRAWING SCALE: \_\_\_\_\_

BID DOCUMENTS  
SEPTEMBER 29, 2022

SHEET TITLE  
**CHAMBERS INTERIOR  
ELEVATIONS**

SHEET NUMBER  
**TA4.6**

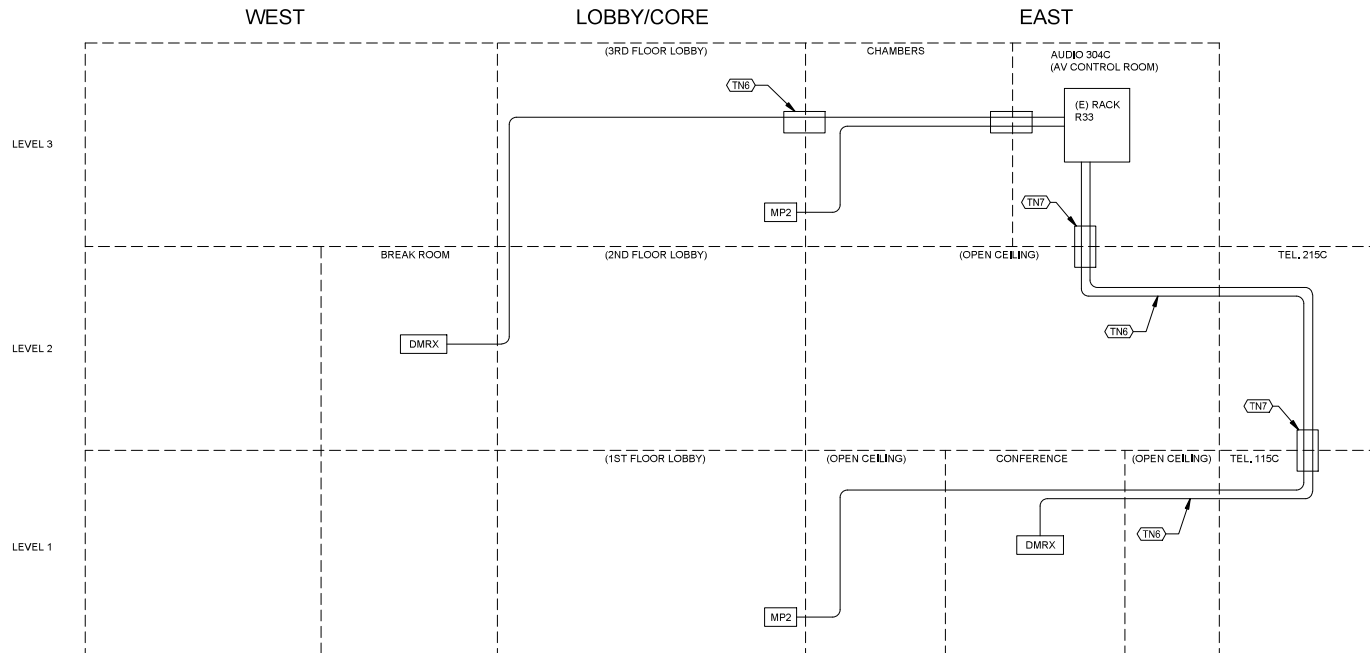


**SHEET NOTES**

- COORDINATE AND SCHEDULE ALL WORK ABOVE CEILINGS AND IN OFFICE/ADMINISTRATION AREAS WITH CITY REPRESENTATIVE TO MINIMIZE DISRUPTION TO OCCUPANTS.
- PATHWAY IN OPEN-CEILING/EXPOSED AREAS SHALL BE RIGID METAL CONDUIT AND SHALL BE PAINTED TO MATCH ADJACENT ASSEMBLY'S STRUCTURE. SUBMIT PAINT SAMPLE FOR REVIEW AND ACCEPTANCE BY OWNER PRIOR TO PAINTING.

**KEYNOTES**

- (TN1) AV FIBER TO FOLLOW TELECOMMUNICATION PATHWAYS BETWEEN LEVELS. REFER TO TN7.001.
- (TN2) (1) 2" C.
- (TN3) PROVIDE 2 STRAND OS2 SINGLE MODE FIBER, PLENUM RATED.
- (TN4) PROVIDE 20' SLACK FIBER AND COIL INSIDE A FIBER MANAGEMENT RING (FMR) AS SPECIFIED ON SECTION 27 11 23. MOUNT ON THE BACKBOARD.
- (TN5) PROVIDE WMD (WIRE MESH INNERDUCT) ON ALL FIBER CABLING INSTALLATION.
- (TN6) MAINTAIN 2-HR RATING AT SEPARATION BETWEEN CHAMBERS AND 3RD FLOOR LOBBY->
- (TN7) (E) 4" CONDUIT/SLEEVE, V.I.F. MAINTAIN FIRE-RATING.
- (TN8) COORDINATE ROUTING AND INSTALLATION OF (N) LOW-VOLTAGE PATHWAY WITH (N) ELECTRICAL PATHWAY, REFER TO ELECTRICAL DRAWINGS.



**PITTSBURG CITY HALL COUNCIL CHAMBERS AUDIOVISUAL UPGRADES**  
 PITTSBURG, CA

REVISIONS

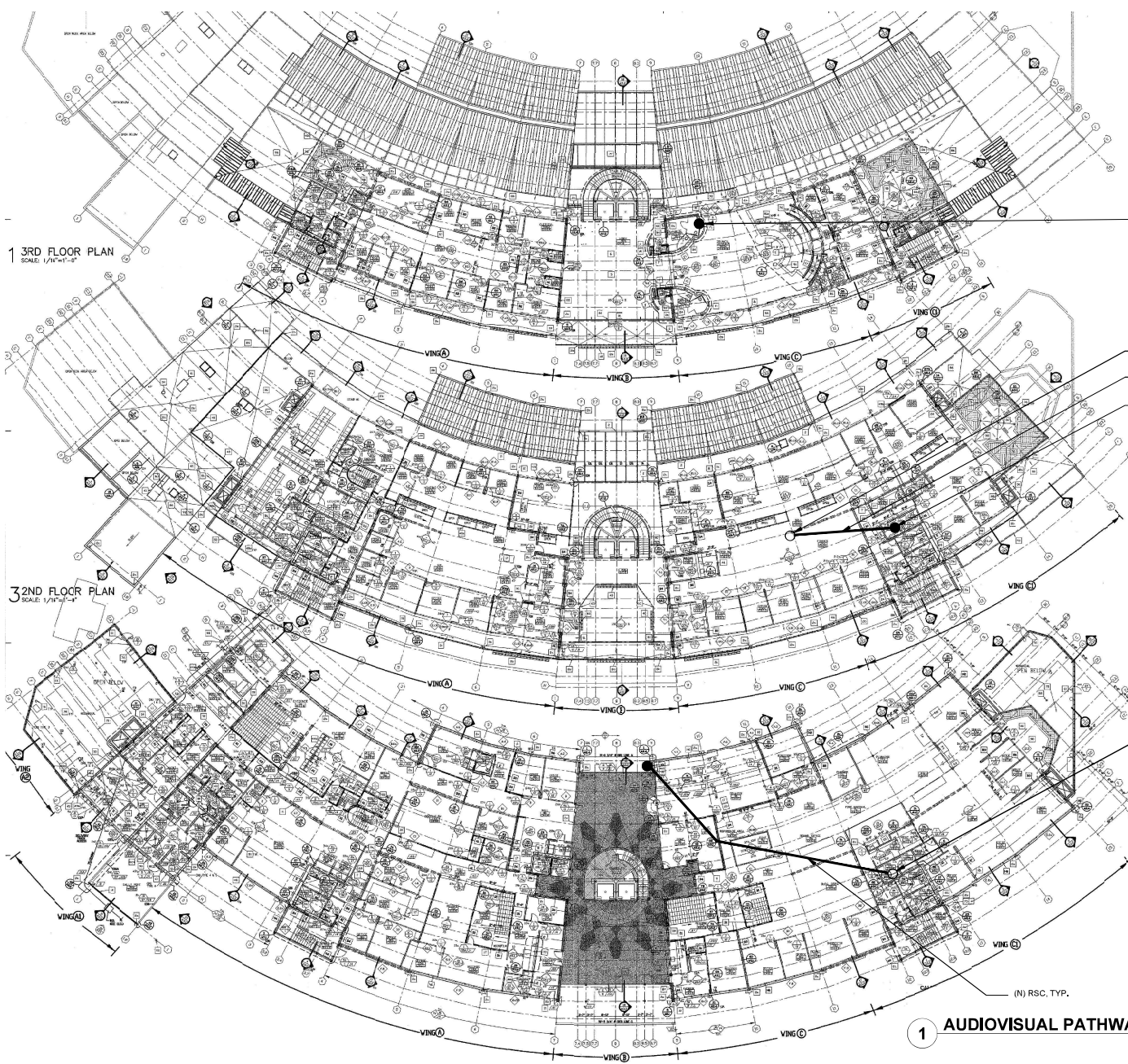
NO.	DESCRIPTION

PROJECT NO: \_\_\_\_\_  
 DRAWN BY: \_\_\_\_\_  
 DRAWING SCALE: \_\_\_\_\_

**BID DOCUMENTS**  
**SEPTEMBER 29, 2022**

SHEET TITLE  
**AUDIOVISUAL RISER DIAGRAM**

SHEET NUMBER  
**TA7.0A**



1 3RD FLOOR PLAN  
SCALE: 1/4"=1'-0"

32ND FLOOR PLAN  
SCALE: 1/4"=1'-0"

(E) 4" CONDUIT  
DOWN, V.I.F.

(E) 4" CONDUIT  
UP, V.I.F.  
(N) RSC, TYP.  
(E) 4" CONDUIT  
DOWN, V.I.F.

(E) 4" CONDUIT  
UP, V.I.F.

(N) RSC, TYP.

1 AUDIOVISUAL PATHWAY DIAGRAM  
1"=20'-0" NORTH



PITTSBURG CITY HALL COUNCIL  
CHAMBERS  
AUDIOVISUAL UPGRADES  
PITTSBURG, CA

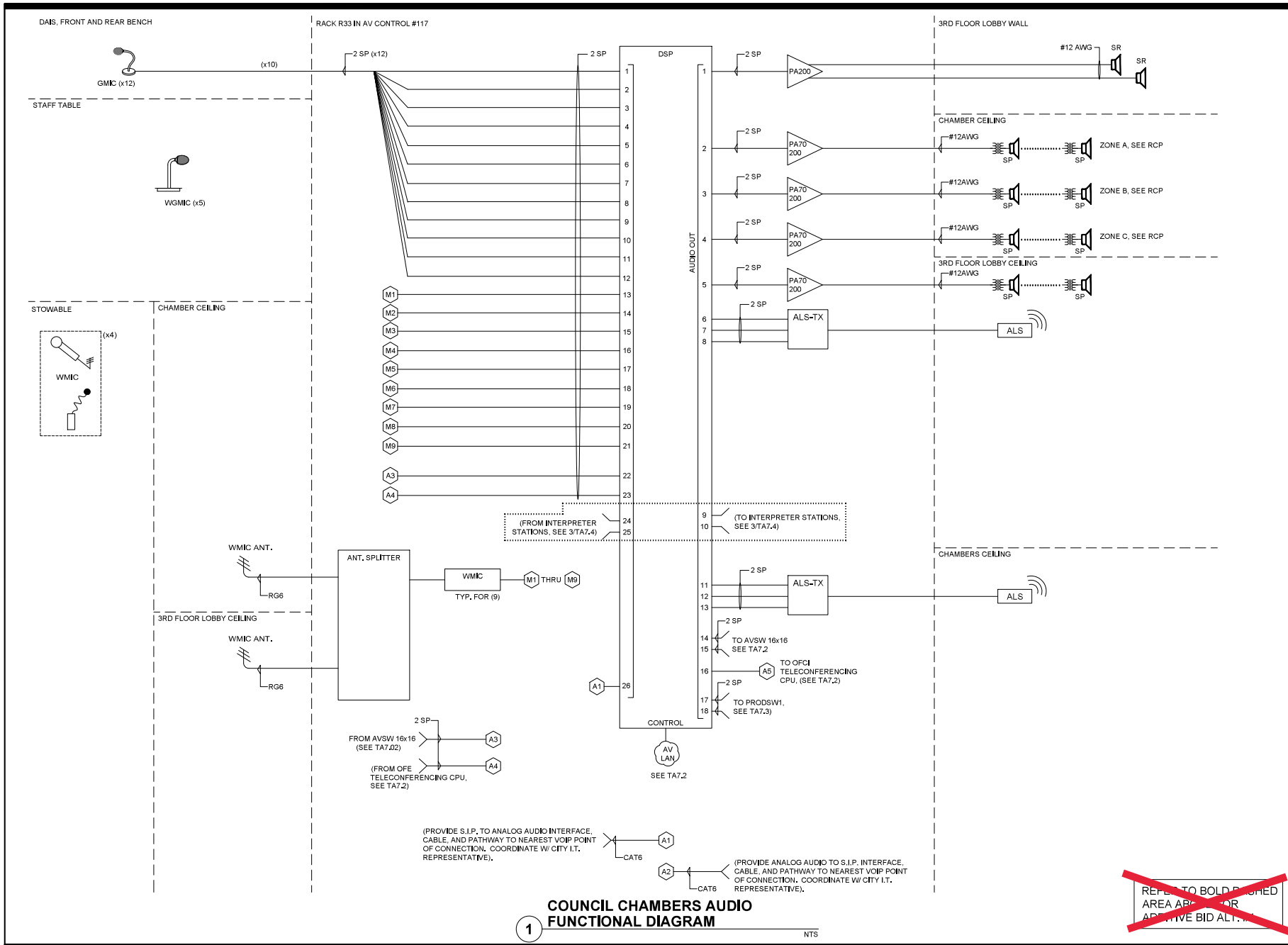
NO.	DATE	DESCRIPTION

PROJECT NO.:  
DRAWN BY:  
DRAWING SCALE:

BID DOCUMENTS  
SEPTEMBER 29, 2022  
SHEET TITLE

AUDIOVISUAL PATHWAY  
DIAGRAM

SHEET NUMBER  
TA7.0B



**PITTSBURG CITY HALL COUNCIL CHAMBERS AUDIOVISUAL UPGRADES**  
 PITTSBURG, CA

REVISIONS

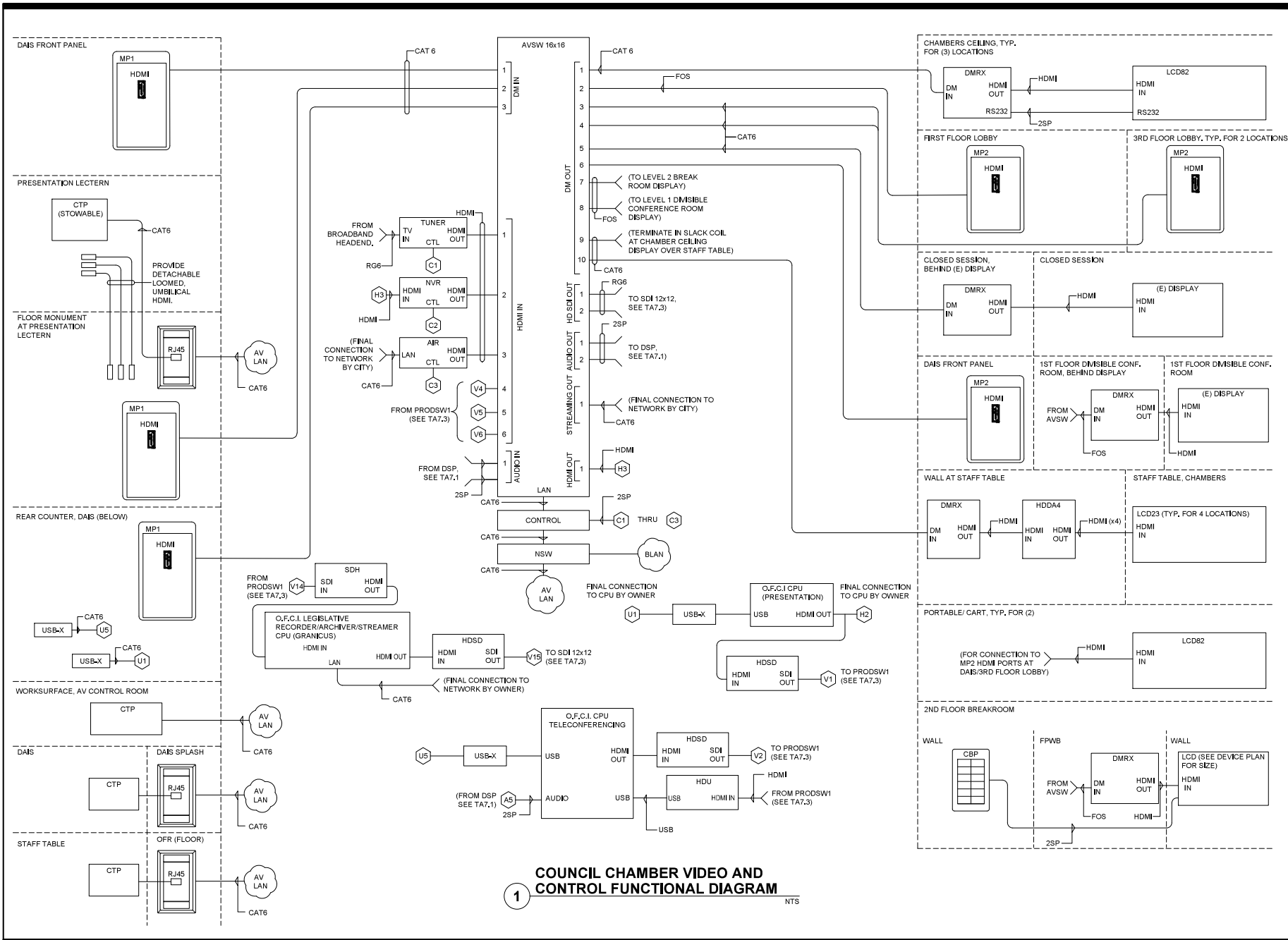

PROJECT NO:  
 DRAWN BY:  
 DRAWING SCALE:

BID DOCUMENTS  
 SEPTEMBER 29, 2022  
 SHEET TITLE

COUNCIL CHAMBER AUDIO FUNCTIONAL DIAGRAM

SHEET NUMBER

TA7.1



**1 COUNCIL CHAMBER VIDEO AND CONTROL FUNCTIONAL DIAGRAM** NTS



**PITTSBURG CITY HALL COUNCIL CHAMBERS AUDIOVISUAL UPGRADES**  
PITTSBURG, CA

REVISIONS

NO.	DESCRIPTION

PROJECT NO:  
DRAWN BY:  
DRAWING SCALE:

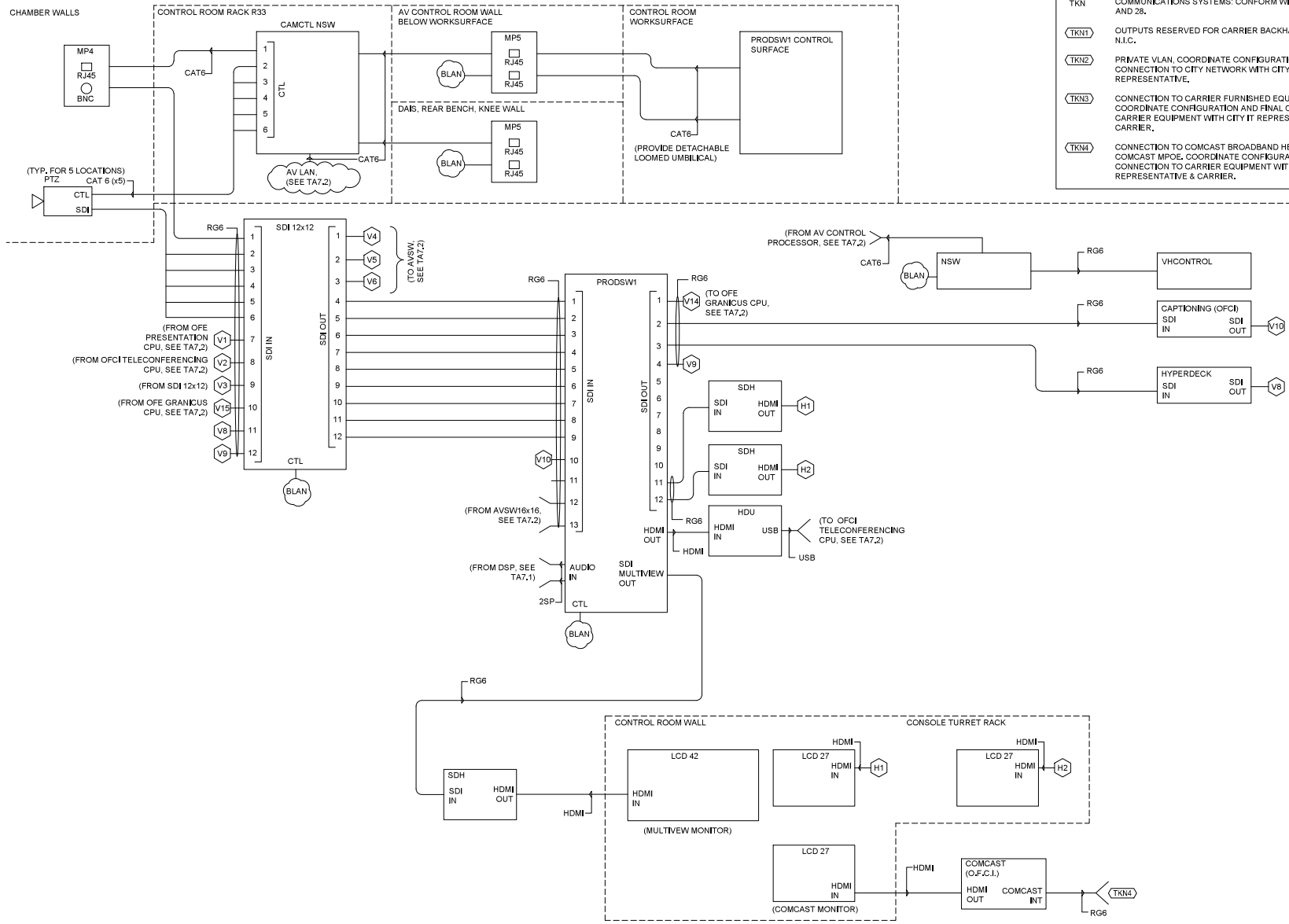
**BID DOCUMENTS**  
**SEPTEMBER 29, 2022**

COUNCIL CHAMBER VIDEO AND CONTROL FUNCTIONAL DIAGRAM

SHEET NUMBER  
**TA7.2**



KEYNOTES	
TKN	COMMUNICATIONS SYSTEMS: CONFORM WITH DIVISION 27 AND 28.
(TKN1)	OUTPUTS RESERVED FOR CARRIER BACKHAUL EQUIPMENT, N.I.C.
(TKN2)	PRIVATE VLAN. COORDINATE CONFIGURATION AND FINAL CONNECTION TO CITY NETWORK WITH CITY IT REPRESENTATIVE.
(TKN3)	CONNECTION TO CARRIER FURNISHED EQUIPMENT. COORDINATE CONFIGURATION AND FINAL CONNECTION TO CARRIER EQUIPMENT WITH CITY IT REPRESENTATIVE & CARRIER.
(TKN4)	CONNECTION TO COMCAST BROADBAND HEADEND, AT COMCAST MPOE. COORDINATE CONFIGURATION AND FINAL CONNECTION TO CARRIER EQUIPMENT WITH CITY IT REPRESENTATIVE & CARRIER.



**1 COUNCIL CHAMBER PRODUCTION FUNCTIONAL DIAGRAM**  
NTS



**PITTSBURG CITY HALL COUNCIL CHAMBERS AUDIOVISUAL UPGRADES**  
PITTSBURG, CA

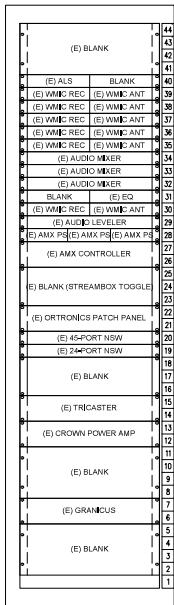
NO.	REVISIONS

PROJECT NO: \_\_\_\_\_  
DRAWN BY: \_\_\_\_\_  
DRAWING SCALE: \_\_\_\_\_

BID DOCUMENTS  
SEPTEMBER 29, 2022

WHEET TITLE  
COUNCIL CHAMBER PRODUCTION FUNCTIONAL DIAGRAM

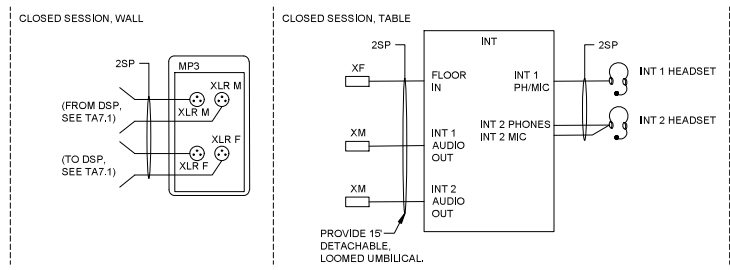
WHEET NUMBER  
TA7.3



**1 (E) AV RACK - EXISTING EQUIPMENT TO BE REMOVED**  
1 1/2"=1'-0"



**2 COUNCIL CHAMBER SPEAKER TIMING SYSTEM FUNCTIONAL DIAGRAM**  
NTS



**3 INTERPRETATION STATION FUNCTIONAL DIAGRAM**  
NTS



**PITTSBURG CITY HALL COUNCIL CHAMBERS AUDIOVISUAL UPGRADES**  
PITTSBURG, CA

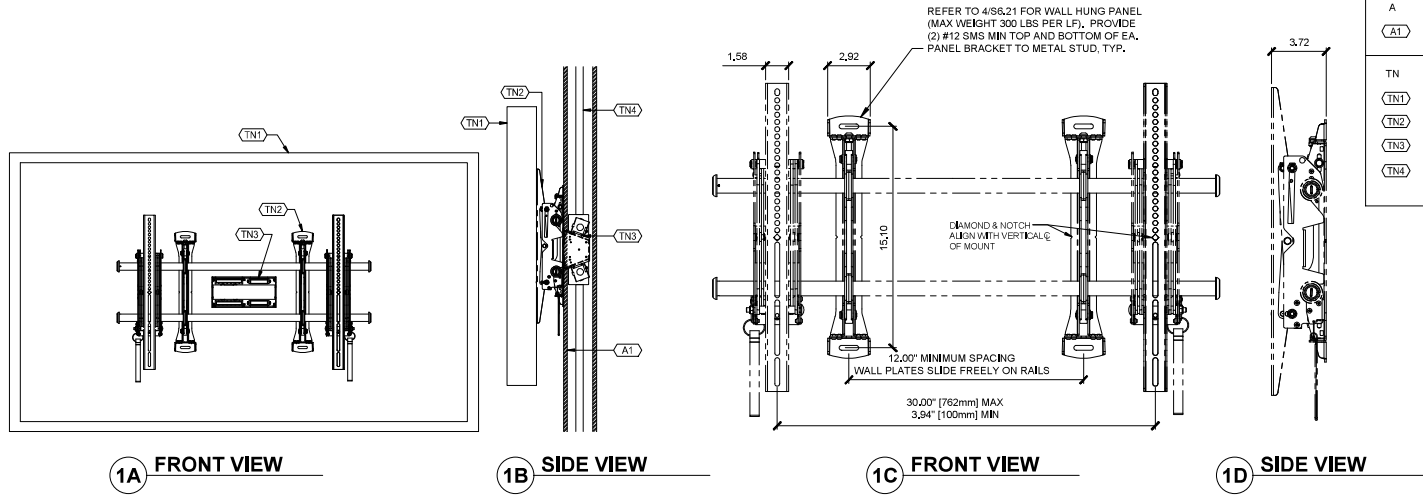
REVISIONS	

PROJECT NO. \_\_\_\_\_  
DRAWN BY: \_\_\_\_\_  
DRAWING SCALE: \_\_\_\_\_

BID DOCUMENTS  
SEPTEMBER 29, 2022

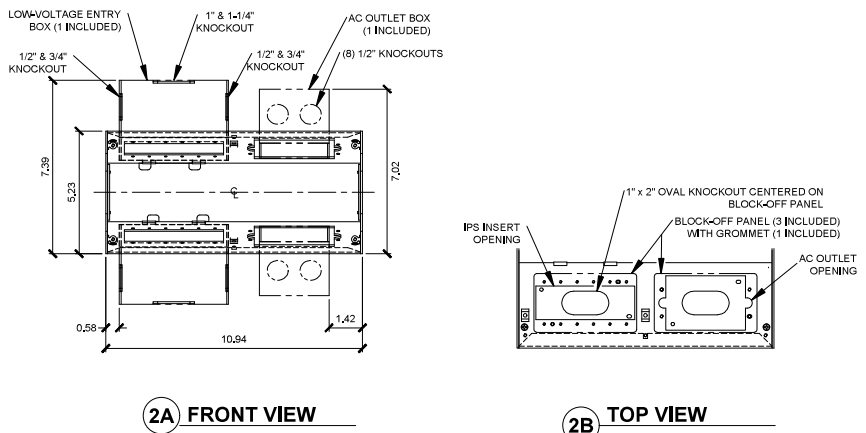
(E) RACK ELEVATION AND SPEAKER TIMING DIAGRAM

SHEET NUMBER  
TA7.4



KEYNOTES	
A	ARCHITECTURAL: COMPLY WITH DIVISIONS 2-14.
(A1)	WALL ASSEMBLY W/ W/ MINIMUM 300 LB/IF BACKING.
TN TELECOMMUNICATIONS SYSTEMS: COMPLY WITH DIVISION 27.	
(TN1)	FLAT PANEL DISPLAY/LCD.
(TN2)	FLAT PANEL MOUNT - NET WEIGHT NOT TO EXCEED 40 LBS.
(TN3)	FLAT PANEL WALL BOX, FPWB1, RECESSED FLUSH IN WALL.
(TN4)	IN-WALL CONDUIT RACEWAY.

**1 FLAT PANEL MOUNT ASSEMBLY**  
NTS



**2 FLAT PANEL WALL BOX - FPWB**  
NTS



**PITTSBURG CITY HALL COUNCIL  
CHAMBERS  
AUDIOVISUAL UPGRADES**  
PITTSBURG, CA

NO.	REVISIONS

PROJECT NO: \_\_\_\_\_  
DRAWN BY: \_\_\_\_\_  
DRAWING SCALE: \_\_\_\_\_

BID DOCUMENTS  
SEPTEMBER 29, 2022  
SHEET TITLE

DETAILS - FLAT PANEL  
WALL BOX AND  
FLAT PANEL MOUNT

SHEET NUMBER  
T90.1