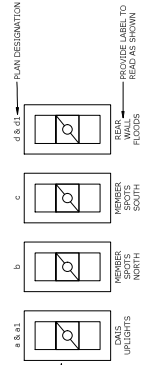
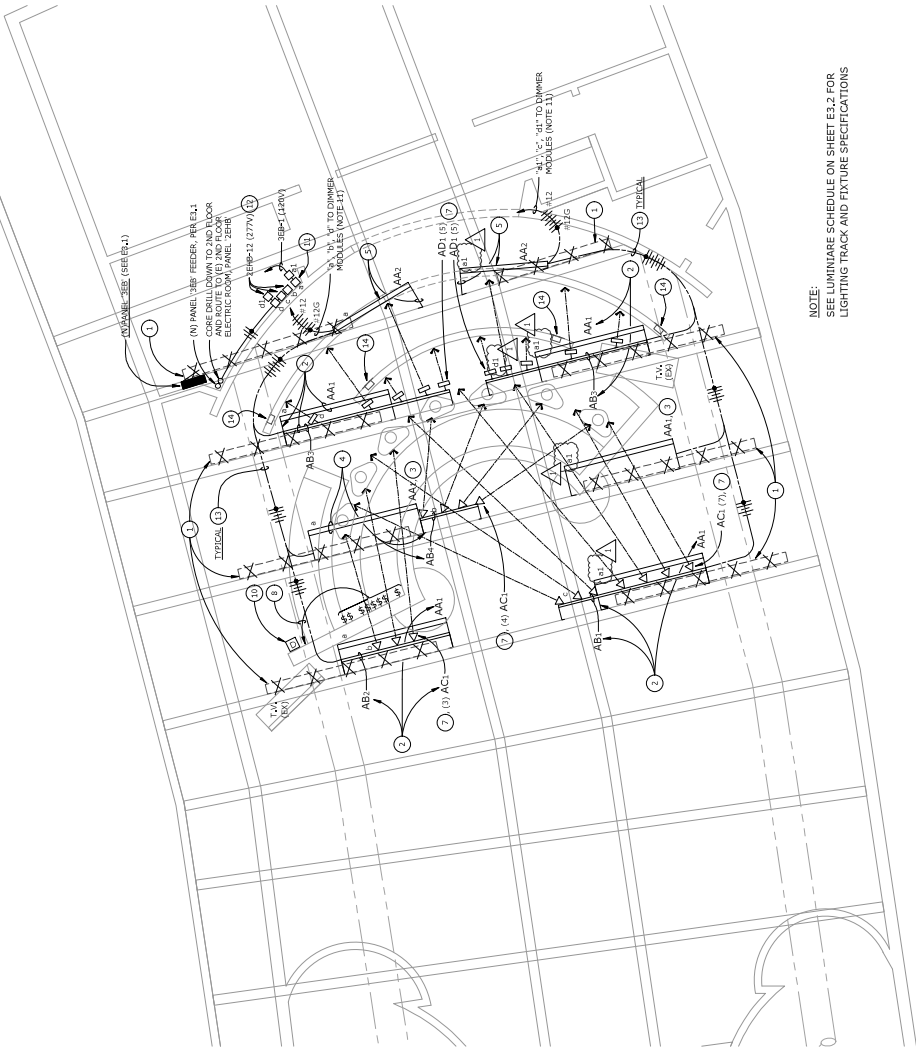


TYPICAL LUTRON PICO DIMMER (OWPF) SWITCHES. DIMMER LOCATED TO THE RIGHT OF THE SWITCHES. DIMMER LOCATED TO THE LEFT OF THE SWITCHES. (ADJACENT TO STANDARD SWITCHES)



**DIMMER SWITCH LAYOUT** (SYMBOL)

SCALE: NONE



NOTE:  
SEE LUMINAIRE SCHEDULE ON SHEET E3.2 FOR LIGHTING TRACK AND FIXTURE SPECIFICATIONS

**3RD FLOOR COUNCIL CHAMBERS FLOOR PLAN - LIGHTING**  
SCALE: 1/4" = 1'-0"



**NUMBERED SHEET NOTES**

- DISCONNECT, COMPLETELY REMOVE AND RETURN TO OWNER, ALL EXISTING LINEAR FLUORESCENT DIRECT/INDIRECT LUMINAIRES INDICATED AT THEIR CURRENT MOUNTING POSITIONS ON THE BOTTOM CHORD OF THE STRUCTURAL ROOF TRUSS.
- REMOVE EXISTING LINEAR FLUORESCENT DOWNLIGHTS IN THE EXISTING LINEAR FLUORESCENT LIGHT TRACK RAILS WITH ACT LED SPOTLIGHTS ON, NOT LED DOWNWASH UNITS, AS INDICATED AT EACH LOCATION. REMOVE EXISTING LINEAR FLUORESCENT DOWNLIGHTS AND INDICATED AT EACH LOCATION. REMOVE EXISTING LINEAR FLUORESCENT DOWNLIGHTS AND INDICATED AT EACH LOCATION. REMOVE EXISTING LINEAR FLUORESCENT DOWNLIGHTS AND INDICATED AT EACH LOCATION. REMOVE EXISTING LINEAR FLUORESCENT DOWNLIGHTS AND INDICATED AT EACH LOCATION. REMOVE EXISTING LINEAR FLUORESCENT DOWNLIGHTS AND INDICATED AT EACH LOCATION. REMOVE EXISTING LINEAR FLUORESCENT DOWNLIGHTS AND INDICATED AT EACH LOCATION.
- REMOVE EXISTING LINEAR FLUORESCENT DOWNLIGHTS IN THE EXISTING LINEAR FLUORESCENT LIGHT TRACK RAILS WITH ACT LED SPOTLIGHTS ON, NOT LED DOWNWASH UNITS, AS INDICATED AT EACH LOCATION. REMOVE EXISTING LINEAR FLUORESCENT DOWNLIGHTS AND INDICATED AT EACH LOCATION. REMOVE EXISTING LINEAR FLUORESCENT DOWNLIGHTS AND INDICATED AT EACH LOCATION. REMOVE EXISTING LINEAR FLUORESCENT DOWNLIGHTS AND INDICATED AT EACH LOCATION. REMOVE EXISTING LINEAR FLUORESCENT DOWNLIGHTS AND INDICATED AT EACH LOCATION. REMOVE EXISTING LINEAR FLUORESCENT DOWNLIGHTS AND INDICATED AT EACH LOCATION. REMOVE EXISTING LINEAR FLUORESCENT DOWNLIGHTS AND INDICATED AT EACH LOCATION.
- REMOVE EXISTING LINEAR FLUORESCENT DOWNLIGHTS IN THE EXISTING LINEAR FLUORESCENT LIGHT TRACK RAILS WITH ACT LED SPOTLIGHTS ON, NOT LED DOWNWASH UNITS, AS INDICATED AT EACH LOCATION. REMOVE EXISTING LINEAR FLUORESCENT DOWNLIGHTS AND INDICATED AT EACH LOCATION. REMOVE EXISTING LINEAR FLUORESCENT DOWNLIGHTS AND INDICATED AT EACH LOCATION. REMOVE EXISTING LINEAR FLUORESCENT DOWNLIGHTS AND INDICATED AT EACH LOCATION. REMOVE EXISTING LINEAR FLUORESCENT DOWNLIGHTS AND INDICATED AT EACH LOCATION. REMOVE EXISTING LINEAR FLUORESCENT DOWNLIGHTS AND INDICATED AT EACH LOCATION. REMOVE EXISTING LINEAR FLUORESCENT DOWNLIGHTS AND INDICATED AT EACH LOCATION.
- REMOVE EXISTING LINEAR FLUORESCENT DOWNLIGHTS IN THE EXISTING LINEAR FLUORESCENT LIGHT TRACK RAILS WITH ACT LED SPOTLIGHTS ON, NOT LED DOWNWASH UNITS, AS INDICATED AT EACH LOCATION. REMOVE EXISTING LINEAR FLUORESCENT DOWNLIGHTS AND INDICATED AT EACH LOCATION. REMOVE EXISTING LINEAR FLUORESCENT DOWNLIGHTS AND INDICATED AT EACH LOCATION. REMOVE EXISTING LINEAR FLUORESCENT DOWNLIGHTS AND INDICATED AT EACH LOCATION. REMOVE EXISTING LINEAR FLUORESCENT DOWNLIGHTS AND INDICATED AT EACH LOCATION. REMOVE EXISTING LINEAR FLUORESCENT DOWNLIGHTS AND INDICATED AT EACH LOCATION. REMOVE EXISTING LINEAR FLUORESCENT DOWNLIGHTS AND INDICATED AT EACH LOCATION.
- REMOVE EXISTING LINEAR FLUORESCENT DOWNLIGHTS IN THE EXISTING LINEAR FLUORESCENT LIGHT TRACK RAILS WITH ACT LED SPOTLIGHTS ON, NOT LED DOWNWASH UNITS, AS INDICATED AT EACH LOCATION. REMOVE EXISTING LINEAR FLUORESCENT DOWNLIGHTS AND INDICATED AT EACH LOCATION. REMOVE EXISTING LINEAR FLUORESCENT DOWNLIGHTS AND INDICATED AT EACH LOCATION. REMOVE EXISTING LINEAR FLUORESCENT DOWNLIGHTS AND INDICATED AT EACH LOCATION. REMOVE EXISTING LINEAR FLUORESCENT DOWNLIGHTS AND INDICATED AT EACH LOCATION. REMOVE EXISTING LINEAR FLUORESCENT DOWNLIGHTS AND INDICATED AT EACH LOCATION. REMOVE EXISTING LINEAR FLUORESCENT DOWNLIGHTS AND INDICATED AT EACH LOCATION.
- REMOVE EXISTING LINEAR FLUORESCENT DOWNLIGHTS IN THE EXISTING LINEAR FLUORESCENT LIGHT TRACK RAILS WITH ACT LED SPOTLIGHTS ON, NOT LED DOWNWASH UNITS, AS INDICATED AT EACH LOCATION. REMOVE EXISTING LINEAR FLUORESCENT DOWNLIGHTS AND INDICATED AT EACH LOCATION. REMOVE EXISTING LINEAR FLUORESCENT DOWNLIGHTS AND INDICATED AT EACH LOCATION. REMOVE EXISTING LINEAR FLUORESCENT DOWNLIGHTS AND INDICATED AT EACH LOCATION. REMOVE EXISTING LINEAR FLUORESCENT DOWNLIGHTS AND INDICATED AT EACH LOCATION. REMOVE EXISTING LINEAR FLUORESCENT DOWNLIGHTS AND INDICATED AT EACH LOCATION. REMOVE EXISTING LINEAR FLUORESCENT DOWNLIGHTS AND INDICATED AT EACH LOCATION.
- REMOVE EXISTING LINEAR FLUORESCENT DOWNLIGHTS IN THE EXISTING LINEAR FLUORESCENT LIGHT TRACK RAILS WITH ACT LED SPOTLIGHTS ON, NOT LED DOWNWASH UNITS, AS INDICATED AT EACH LOCATION. REMOVE EXISTING LINEAR FLUORESCENT DOWNLIGHTS AND INDICATED AT EACH LOCATION. REMOVE EXISTING LINEAR FLUORESCENT DOWNLIGHTS AND INDICATED AT EACH LOCATION. REMOVE EXISTING LINEAR FLUORESCENT DOWNLIGHTS AND INDICATED AT EACH LOCATION. REMOVE EXISTING LINEAR FLUORESCENT DOWNLIGHTS AND INDICATED AT EACH LOCATION. REMOVE EXISTING LINEAR FLUORESCENT DOWNLIGHTS AND INDICATED AT EACH LOCATION. REMOVE EXISTING LINEAR FLUORESCENT DOWNLIGHTS AND INDICATED AT EACH LOCATION.
- REMOVE EXISTING LINEAR FLUORESCENT DOWNLIGHTS IN THE EXISTING LINEAR FLUORESCENT LIGHT TRACK RAILS WITH ACT LED SPOTLIGHTS ON, NOT LED DOWNWASH UNITS, AS INDICATED AT EACH LOCATION. REMOVE EXISTING LINEAR FLUORESCENT DOWNLIGHTS AND INDICATED AT EACH LOCATION. REMOVE EXISTING LINEAR FLUORESCENT DOWNLIGHTS AND INDICATED AT EACH LOCATION. REMOVE EXISTING LINEAR FLUORESCENT DOWNLIGHTS AND INDICATED AT EACH LOCATION. REMOVE EXISTING LINEAR FLUORESCENT DOWNLIGHTS AND INDICATED AT EACH LOCATION. REMOVE EXISTING LINEAR FLUORESCENT DOWNLIGHTS AND INDICATED AT EACH LOCATION. REMOVE EXISTING LINEAR FLUORESCENT DOWNLIGHTS AND INDICATED AT EACH LOCATION.

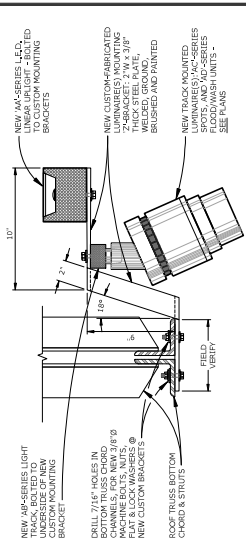
**PITTSBURG CITY HALL COUNCIL CHAMBERS - EM POWER & LIGHTING UPGRADE**  
PITTSBURG, CA



REVISIONS			
PROJECT NO.	221098		
DRAWN BY	EMTV		
DRAWING SCALE			

BID DOCUMENTS  
SEPTEMBER 29, 2022

3RD FLOOR COUNCIL CHAMBERS FLOOR PLAN - LIGHTING  
E2.1



- INSTALL NOTES:  
1. BRACKET PROVIDED @ MAX. 48" O.C.  
2. ALL BRACKETS TO BE INSTALLED ON SIDES, WELDED, GROUND & BRUSHED.  
3. DRILL BRACKETS AS NOTED, FOR LUMINAIRE TRACKS (VERIFYING PROFESSIONAL).

**'AA' LUM. & 'AB' TRACK BRACKET MOUNTING**  
SCALE: NOT TO SCALE  
FILE: E2.1

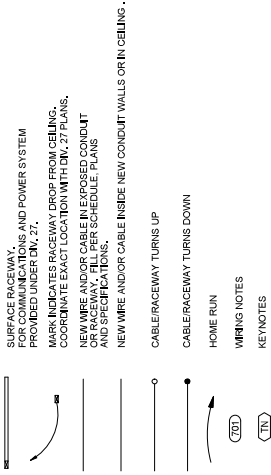




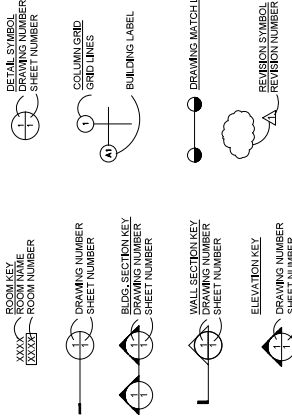
## AUDIO VISUAL SYSTEMS GENERAL NOTES

- REFER TO SPECIFICATIONS FOR COMPLETE REQUIREMENTS.
- PROVIDE CONDUIT, BOXES, AND FITTINGS SHOWN ON AUDIO VISUAL SYSTEMS (AV) DRAWINGS UNDER THE WORK OF SECTION 27.41.03 CONDUITS AND BACKBOXES FOR AUDIO VISUAL SYSTEMS, UNLESS OTHERWISE INDICATED. PROVIDE 1 INCH TRADE SIZE MINIMUM PROVIDE RACEWAY SIZE AS REQUIRED FOR A MAXIMUM OF 30 PERCENT WIRE FILL.
- PROVIDE FIRESTOPPING UNDER THE WORK OF SECTION 27.41.03.
- NOT USE.
- DEVICE QUANTITIES SHOWN ON FLOOR PLANS AND REFLECTED CEILING PLANS TAKE PRECEDENCE OVER DEVICE QUANTITIES SHOWN ON FUNCTIONAL DIAGRAMS.
- QUANTITIES SHOWN ON FUNCTIONAL DIAGRAMS TAKE PRECEDENCE OVER QUANTITIES SHOWN ON RACK ELEVATIONS.
- QUANTITIES SHOWN ON DEVICE SCHEDULES TAKE PRECEDENCE OVER QUANTITIES SHOWN ON FUNCTIONAL DIAGRAMS. FLOOR PLANS AND REFLECTED CEILING PLANS, LOCATIONS SHOWN ON LARGE SCALE DRAWINGS TAKE PRECEDENCE OVER LOCATIONS SHOWN ON SMALL SCALE DRAWINGS.
- NOT USED.
- WIRING FOR THE WORK OF AUDIO VISUAL SYSTEMS IS NOT PERMITTED TO SHARE CONDUIT, SLEEVES OR J-BOXES WITH WIRING FOR WORK OF COMMUNICATIONS SYSTEMS. ALL WIRING SHALL BE SEPARATELY IDENTIFIED AND MAINTAINED RUNNING PARALLEL. MAINTAIN AT LEAST 1 INCH OF SEPARATION, VERTICALLY IF CROSSING AT RIGHT ANGLES.

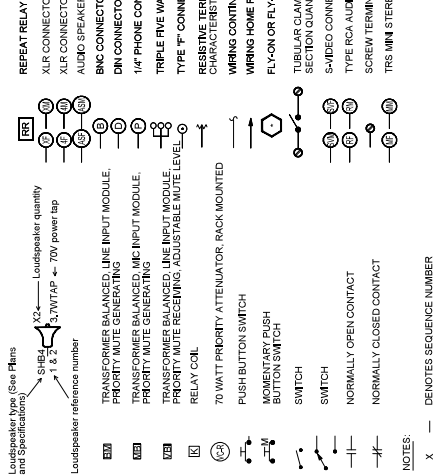
## LEGEND



## GENERAL SYMBOLS



## AV FUNCTIONALS LEGEND



NOTES:

X — DENOTES SEQUENCE NUMBER

## ABBREVIATIONS

A.D.A.	AMERICANS WITH DISABILITIES ACT	MMF	MULTI-MODE OPTICAL FIBER
A.F.F.	ABOVE FINISHED FLOOR	MOD.	MODULAR
A.F.T.	ALTERNATE	MPDE	MINIMUM POINT OF ENTRY
A.M.F.F.	ABOVE MEZZANINE FINISHED FLOOR	(N)	NEW
B.F.	BUILDING DISTRIBUTION FACILITY	NEC	NATIONAL ELECTRICAL CODE
B.F.C.	BUILDING FINISHED CEILING	NOT	NOT CONTRACT
B.L.D.	BUILDING	NTS	NOT TO SCALE
B.O.S.	BUILDING OUTSIDE PLANT	O.C.	ON CENTER
C.	CONDUIT	O.D.	OUTSIDE DIAMETER
CAT.	CATEGORY	O.P.	OWNER FURNISHED EQUIPMENT
CBC	CALIFORNIA BUILDING CODE	OSP	OWNER PROVIDED
CEC	CALIFORNIA ELECTRICAL CODE	OSPL	OWNER SUPPLIED
COMM.	COMMUNICATIONS	P.N.L.	PANEL
C.L.	CENTERLINE	PROJ.	PROJECT
C.O.	CONDUIT ONLY	P.S.T.	PROJECT STANDARD
C.S.	COMMUNICATIONS SYSTEM	P.S.T.H.	PROJECT STANDARD SWITCH HEIGHT
(D)	DEMOLISH EXISTING	R.E.	REFER TO
DED	DEDUCTIVE	R.F.	SEE ARCHITECTURAL DRAWINGS
DIA.	DIAMETER	S.A.D.	SEE ELECTRICAL DRAWINGS
DIV	DIVISION	S.I.D.	SEE MECHANICAL DRAWINGS
(E)	EXISTING	SIM.	SIMILAR
EIA	ELECTRONIC INDUSTRIES ASSOCIATION	S.M.F.	SINGLE MODE OPTICAL FIBER
ELEV.	ELEVATION	SP	SHIELDED PAIR - SEE SPECIFICATIONS
E.O.L.	END OF LINE	SPEC	SPECIFICATION
E.Q.T.	EQUIPMENT	S.R.	SURFACE RACEWAY
FIN	FINISHED	STD	STANDARD
FUT	FUTURE	STP	SHIELDED TWISTED PAIR
H.C.	HIGH RISE RUN	T.C.	TELECOMMUNICATIONS CLOSET
H.C.	HIGH RISE RUN	TELECOM	TELECOMMUNICATIONS
IDF	INTERMEDIATE DISTRIBUTION FACILITY	TIA	TELECOMMUNICATIONS INDUSTRY ASSOCIATION
J-BOX	JUNCTION BOX	TP	TWISTED PAIR
LAN	LOCAL AREA NETWORK	TYP.	TYPICAL
MAX.	MAXIMUM	UNCL.	UNLESS OTHERWISE NOTED
MDP	MID POINT	WI	WEATHERPROOF
MN	MINOR	WP	WEATHERPROOF

## ABBREVIATIONS

A.D.A.	AMERICANS WITH DISABILITIES ACT	MMF	MULTI-MODE OPTICAL FIBER
A.F.F.	ABOVE FINISHED FLOOR	MOD.	MODULAR
A.F.T.	ALTERNATE	MPDE	MINIMUM POINT OF ENTRY
A.M.F.F.	ABOVE MEZZANINE FINISHED FLOOR	(N)	NEW
B.F.	BUILDING DISTRIBUTION FACILITY	NEC	NATIONAL ELECTRICAL CODE
B.F.C.	BUILDING FINISHED CEILING	NOT	NOT CONTRACT
B.L.D.	BUILDING	NTS	NOT TO SCALE
B.O.S.	BUILDING OUTSIDE PLANT	O.C.	ON CENTER
C.	CONDUIT	O.D.	OUTSIDE DIAMETER
CAT.	CATEGORY	O.P.	OWNER FURNISHED EQUIPMENT
CBC	CALIFORNIA BUILDING CODE	OSP	OWNER PROVIDED
CEC	CALIFORNIA ELECTRICAL CODE	OSPL	OWNER SUPPLIED
COMM.	COMMUNICATIONS	P.N.L.	PANEL
C.L.	CENTERLINE	PROJ.	PROJECT
C.O.	CONDUIT ONLY	P.S.T.	PROJECT STANDARD
C.S.	COMMUNICATIONS SYSTEM	P.S.T.H.	PROJECT STANDARD SWITCH HEIGHT
(D)	DEMOLISH EXISTING	R.E.	REFER TO
DED	DEDUCTIVE	R.F.	SEE ARCHITECTURAL DRAWINGS
DIA.	DIAMETER	S.A.D.	SEE ELECTRICAL DRAWINGS
DIV	DIVISION	S.I.D.	SEE MECHANICAL DRAWINGS
(E)	EXISTING	SIM.	SIMILAR
EIA	ELECTRONIC INDUSTRIES ASSOCIATION	S.M.F.	SINGLE MODE OPTICAL FIBER
ELEV.	ELEVATION	SP	SHIELDED PAIR - SEE SPECIFICATIONS
E.O.L.	END OF LINE	SPEC	SPECIFICATION
E.Q.T.	EQUIPMENT	S.R.	SURFACE RACEWAY
FIN	FINISHED	STD	STANDARD
FUT	FUTURE	STP	SHIELDED TWISTED PAIR
H.C.	HIGH RISE RUN	T.C.	TELECOMMUNICATIONS CLOSET
H.C.	HIGH RISE RUN	TELECOM	TELECOMMUNICATIONS
IDF	INTERMEDIATE DISTRIBUTION FACILITY	TIA	TELECOMMUNICATIONS INDUSTRY ASSOCIATION
J-BOX	JUNCTION BOX	TP	TWISTED PAIR
LAN	LOCAL AREA NETWORK	TYP.	TYPICAL
MAX.	MAXIMUM	UNCL.	UNLESS OTHERWISE NOTED
MDP	MID POINT	WI	WEATHERPROOF
MN	MINOR	WP	WEATHERPROOF

## ALS SCHEDULE

COMPLY WITH CBC 18A-219.18-189 ASSISTIVE LISTENING SYSTEMS IN ASSEMBLY AREAS.	
PROVIDE COMPLETE ASSISTIVE LISTENING SYSTEMS UNDER THE WORK OF SECTION 27.41.16	
1A. NUMBER OF PERSONAL RECEIVERS REQUIRED UNDER THE WORK OF SECTION 27.41.16:	TOTAL SEATS
3RD FLOOR LOBBY (A4, STANDING)	298
COUNCIL CHAMBERS (A4, STAFF, VOLUNTEER SEATING)	210
COUNCIL CHAMBERS (A4, DUES STAFF, FREQ SEATING)	42
TOTAL SEATS AT ASSEMBLY SPACES WITH FIXED SEATS & SOUND SYSTEMS:	550
PROVIDE QUANTITY OF (N) RECEIVERS:	22
PROVIDE QUANTITY OF (M) HEARING-AID COMPATIBLE RECEIVERS:	6
TOTAL RECEIVERS:	22
2. TYPE OF LISTENING SYSTEM: RF	
3. LOCATION FOR USE ANYWHERE WITHIN THE ASSEMBLY AREAS.	
4. SIGNAGE: PROVIDE ALS SIGNAGE PER CBC 18A	

## JUNCTION BOX SCHEDULE

SYMBOL	H (INCHES)	W (INCHES)	D (INCHES)
J1	6	6	4
J2	8	8	4
J3	12	12	4
J4	12	12	6
J5	12	12	8
J6	16	12	8
J7	18	18	8
J8	20	16	8
J9	20	16	8
J10	20	30	8
J11	20	20	8
J12	24	20	8
J13	24	20	8
J14	24	24	8
J15	30	24	8
J16	30	30	8
J17	36	30	8
J18	36	36	8

## NOTE

- ALL JUNCTION BOXES TO BE HINGED TYPE, PROVIDED WITH TWO HINGES AND TWO LOCKS.
- NEW 1 WITH TWO HINGES AND TWO LOCKS.
- NEW 2 WITH TWO HINGES AND TWO LOCKS.
- NEW 3R AS REQUIRED FOR INSTALLATION, PART ALL INTERIOR BOXES TO MATCH WALL FINISH, COORDINATE FINISH WITH ARCH PLANS.
- NEW 4
- NEW 4X

BID DOCUMENTS

SEPTEMBER 29, 2022

SHEET TITLE

GENERAL NOTES, LEGEND, SYMBOL, ABBREVIATIONS AND J-BOX SCHEDULE

SHEET NUMBER

TAO.1

PITTSBURG CITY HALL COUNCIL  
CHAMBERS  
AUDIOVISUAL UPGRADES  
PITTSBURG, CA



SYMBOL	DEVICE	FUNCTION OR SERVICE	LOCATION	WORK OF	ROUGH-IN	RACEWAY	ELEVATION	CABLE FILL & HOMERUN DESTINATION, U.O.N. AND AS NOTED	FINISH	WEIGHT, LB	DETAIL SHEET(S)
Ⓐ	ANTENNA/EMITTER FOR RF ASSISTIVE LISTENING SYSTEM	AUDIO-VISUAL SYSTEMS	CEILING	27 41 16	1-GANG W/ RING	R6	ATTACHED TO (E) TRUSS	PER FUNCTIONAL AND AS NOTED	BLACK	1	N/A
Ⓑ	CONTROL BUTTON PANEL	AUDIO-VISUAL SYSTEMS	WALL	27 41 16	1-GANG W/ RING	R6	+42" A.F.F. TO C.L., U.O.N.	PER FUNCTIONAL AND AS NOTED	WHITE	1	N/A
Ⓒ	WALL-MOUNTED CONTROL PANELS, TOUCH, 10" DIAGONAL	AUDIO-VISUAL SYSTEMS	INDICATED	27 41 16	N/A	N/A	TABLE TOP	PER FUNCTIONAL AND AS NOTED	WHITE	2	N/A
Ⓓ	FLAT PANEL ROUGH-IN BOX	AUDIO VISUAL SYSTEMS	FLUSH IN WALL	27 41 03	FPWB	1-1/2" C. FROM EA. OF (2) LOW VOLTAGE COMPARTMENTS TO ABOVE ACCESSIBLE CEILING	AS NOTED, SEE DEVICE PLAN	PER FUNCTIONAL	WHITE	N/A	N/A
Ⓔ	GOOSENECK MICROPHONE, TOPSET, WITH PUSH-BUTTON CONTROL FOR LATCHING PUSH-TO-TALK	AUDIO VISUAL SYSTEMS	WORK SURFACE	27 41 16	PROVIDE 2" DIA. GROMMET FOR CABLE PASS-THRU IN WORK SURFACE.	N/A	WORK SURFACE	PER FUNCTIONAL AND AS NOTED	BLACK	1	N/A
Ⓕ	FLAT DISPLAY PANEL, 82" DIAGONAL, 16:9 ASPECT RATIO	AUDIO-VISUAL SYSTEMS	FPWB IS FLUSH MTD WALL PANEL IS SURFACE MOUNTED.	27 41 16	FPWB	(SEE FPWB)	CENTERLINE OF DISPLAY AT 60" A.F.F.	PER FUNCTIONAL	BLACK	185	N/A
Ⓖ	FLAT DISPLAY PANEL, 86" DIAGONAL, 16:9 ASPECT RATIO	AUDIO-VISUAL SYSTEMS	FPWB IS FLUSH MTD WALL PANEL IS SURFACE MOUNTED.	27 41 16	FPWB	(SEE FPWB)	CENTERLINE OF DISPLAY AT 60" A.F.F.	PER FUNCTIONAL	BLACK	175	N/A
Ⓗ	FLAT DISPLAY PANEL, 23" DIAGONAL, 16:9 ASPECT RATIO	AUDIO-VISUAL SYSTEMS	FPWB IS FLUSH MTD WALL PANEL IS SURFACE MOUNTED.	27 41 16	FPWB	(SEE FPWB)	CENTERLINE OF DISPLAY AT 60" A.F.F.	PER FUNCTIONAL	BLACK	20	N/A
Ⓙ	FLAT DISPLAY PANEL, 32" DIAGONAL, 16:9 ASPECT RATIO	AUDIO-VISUAL SYSTEMS	FPWB IS FLUSH MTD WALL PANEL IS SURFACE MOUNTED.	27 41 16	FPWB	(SEE FPWB)	CENTERLINE OF DISPLAY AT 60" A.F.F.	PER FUNCTIONAL	BLACK	25	N/A
Ⓚ	HDMI INPUT PLATE	AUDIO-VISUAL SYSTEMS	INDICATED	27 41 16	1 GANG BACKBOX WITH 1 GANG RING, 2-3/4" DEEP	R6	+42" A.F.F. TO C.L., U.O.N.	PER FUNCTIONAL AND AS NOTED	WHITE	N/A	N/A
Ⓛ	HDMI OUTPUT PLATE	AUDIO-VISUAL SYSTEMS	INDICATED	27 41 16	1 GANG BACKBOX WITH 1 GANG RING, 2-3/4" DEEP	R6	+42" A.F.F. TO C.L., U.O.N.	PER FUNCTIONAL AND AS NOTED	WHITE	N/A	N/A
Ⓜ	INTERPRETER STATION/AUDIO PLATE	AUDIO-VISUAL SYSTEMS	INDICATED	27 41 16	1 GANG BACKBOX WITH 1 GANG RING, 2-3/4" DEEP	R6	+18" A.F.F. TO C.L. U.O.N.	PER FUNCTIONAL AND AS NOTED	WHITE	N/A	N/A
Ⓝ	CAMERA SOMP/CONTROL PLATE	AUDIO-VISUAL SYSTEMS	INDICATED	27 41 16	1 GANG BACKBOX WITH 1 GANG RING, 2-3/4" DEEP	R6	+18" A.F.F. TO C.L. U.O.N.	PER FUNCTIONAL AND AS NOTED	WHITE	N/A	N/A
Ⓞ	BROADCAST CONTROL PLATE	AUDIO-VISUAL SYSTEMS	INDICATED	27 41 16	1 GANG BACKBOX WITH 1 GANG RING, 2-3/4" DEEP	R6	+18" A.F.F. TO C.L. U.O.N.	PER FUNCTIONAL AND AS NOTED	WHITE	N/A	N/A
Ⓟ	PAN-TILT-ZOOM VIDEO CAMERA	AUDIO-VISUAL SYSTEMS	INDICATED	27 41 16	1 GANG BACKBOX WITH 1 GANG RING, 2-1/8" DEEP	R6	+84" A.F.F. TO C.L., FLOOR MOUNTED	PER FUNCTIONAL	WHITE	12	N/A
Ⓠ	(E) FULL HEIGHT RACK, SERVIC RATED	AUDIO-VISUAL SYSTEMS	FLOOR	27 41 08	(E)	(E)	FLOOR MOUNTED	PER FUNCTIONAL	BLACK	350	N/A
Ⓡ	LOUDSPEAKER, CEILING, TRUSS/BEAM MOUNT	AUDIO-VISUAL SYSTEMS	CEILING	27 41 16	(E)	(E)	(E) TRUSS	PER FUNCTIONAL AND AS NOTED	BLACK	10	N/A
Ⓢ	LOUDSPEAKER, SOUNDBAR TYPE	AUDIO-VISUAL SYSTEMS	ATTACHED TO DISPLAY	27 41 16	N/A	N/A	ATTACHED TO DISPLAY	PER FUNCTIONAL	BLACK	12	N/A
Ⓣ	LOUDSPEAKER, WALL MOUNTED	AUDIO-VISUAL SYSTEMS	MOUNTED TO WALL	27 41 16	(E)	(E)	INDICATED	PER FUNCTIONAL AND AS NOTED	BLACK	20	N/A
Ⓤ	WIRELESS MICROPHONE ANTENNA	AUDIO-VISUAL SYSTEMS	CEILING	27 41 16	1-GANG W/ PLATE	R6, LRI4 (SEE RCP)	CEILING	AS SCHEDULED	WHITE	1	N/A
Ⓡ	WIRELESS GOOSENECK MICROPHONE, TOPSET, WITH PUSH-BUTTON CONTROL FOR LATCHING PUSH-TO-TALK	AUDIO VISUAL SYSTEMS	WORK SURFACE	27 41 16	N/A	N/A	WORK SURFACE	N/A	BLACK	1	N/A
Ⓡ	WALL SLEEVE/CONDUIT	PATHWAY	INDICATED	27 41 03	N/A	R11					

**NOTE NO. DEVICE NOTES**

LR9 4S BOX, 2-1/8" DEEP MIN., W/ 1 GANG RING WITH LOCKING HINGED COVER PLATE (FSR WB-WR2G OR EQUAL).

LR10 NOT USED

LR11 PROVIDE BACKING AND SUPPORT FOR 6 POUND DEVICE.

LR12 PROVIDE DEVICE COMPLETE WITH BACKBOX, TILE SUPPORT AND GYPSUM. SEE DEVICE PLAN. COMPLY WITH SECTION 0850 11 ACUSTICAL PANEL CEILING.

LR13 PROVIDE BACKING IN WALL SUITABLE TO SUPPORT A 20 POUND DEVICE WITH A LOAD CENTROID 18 INCHES FROM THE FACE OF THE WALL.

LR14 PROVIDE BACKING IN WALL SUITABLE TO SUPPORT A 200 POUND DEVICE WITH A LOAD CENTROID 9 INCHES FROM THE FACE OF THE WALL.

LR15 AS DETAILED AND/OR SCHEDULED ON THE ARCHITECTURAL DRAWINGS.

**LOCATION & ROUGH-IN NOTES**

INSTALLED ASSEMBLY, INCLUDING MONITOR SHALL NOT PROJECT MORE THAN 4" FROM FACE OF WALL, IF LEADING EDGE 27" TO 80" AFF

LR1 MATCH PROJECT SWITCH HEIGHT

LR3 4S BOX W/ 1 GANG RING BLANK COVER PLATE

CONCEAL CONDUITS AND BACKBOXES FOR AUDIOVISUAL DEVICES IN THE ROOF INSULATION LAYER, COORDINATE REFLECTED CEILING PLAN, ROUTE CONDUITS ORTHOGONAL TO BUILDING GRID LINES, UTILIZE GRC CONDUIT AND CAST OUTLET BOXES OR OTHER APPROVED METHODS TO PROVIDE PHYSICAL PROTECTION OF CONCEALED RACEWAYS. PROVIDE FLUSH (RECESSED), CEILING ACCESSIBLE JUNCTION BOXES AS REQUIRED.

LR6 NOT USED

LR7 MANUFACTURER'S VENTED BACKBOX.

LR8 NOT USED

**RACEWAY NOTES**

R1 (4) 2" C. TO ABOVE ACCESSIBLE CEILING. IN ADDITION, PROVIDE END-TO-END CONDUIT FOR FIRE ALERT SYSTEM LOUDSPEAKER DEVICES

R2 3/4" C. END-TO-END, H.R. TO FIRE ALERT SYSTEM HEAD-END IN IDF

R3 NOT USED

R4 AS DETAILED AND/OR SCHEDULED

R5 8DF IDF OR EQUIPMENT ROOM, U.O.N.

R6 1" C. H.R. TO ACCESSIBLE CEILING OR FLOOR, OR TO SERVING IDF OR EQUIPMENT ROOM, U.O.N.

R7 1-1/4" C. H.R. TO ACCESSIBLE CEILING OR FLOOR, OR TO SERVING IDF OR EQUIPMENT ROOM, U.O.N.

R8 NOT USED

R9 AT ACCESSIBLE CEILING, PROVIDE ABOVE CEILING PATHWAY USING CABLE HOOPS, WHERE MOUNTED IN GYP CEILING, EXTEND 3/4" C. TO ACCESSIBLE CEILING.

R10 3-1/4" C. TO 4 GANG COMPARTMENT, 1-1/4" TO 1 GANG COMPARTMENT. STUBBED TO USING BASKET TRAY. SEE ELECTRICAL DRAWINGS FOR ELECTRICAL ROUGH-IN.

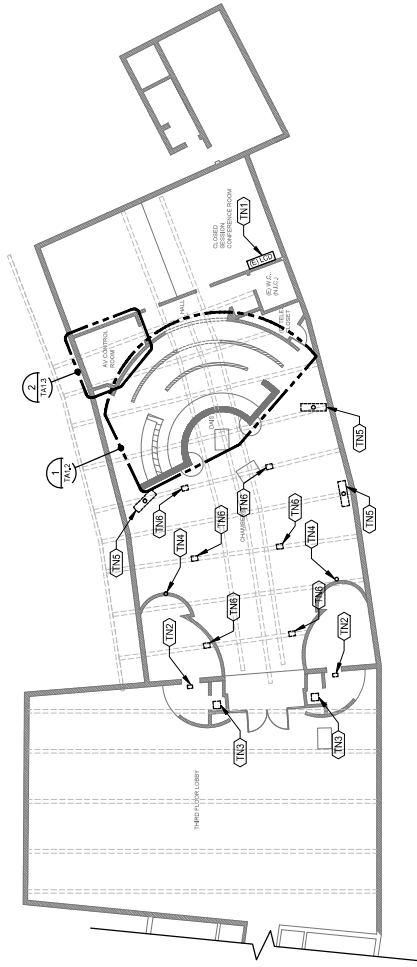
**UNLESS OTHERWISE SHOWN, PROVIDE 1/2" EMT SLEEVE WITH INSULATED THROAT BUSHING AT EACH END, STUBBED WITH 4 INCHES FROM FACE OF WALL, AT ELEVATION APPROXIMATELY 6 INCHES ABOVE ACCESSIBLE CEILING. INSTALL SLEEVE IN AN ACCESSIBLE LOCATION AS DEFINED IN CALIFORNIA ELECTRICAL CODE ARTICLE 100 DEFINITIONS. PROVIDE FIRE STOPPING UNDER WORK OF SECTION 27 41 08, BOND TO GROUND, COMPLY WITH DIVISION 26 AND SECTION 27 41 01 GROUNDING.**

R11 UNLESS OTHERWISE SHOWN, PROVIDE 1/2" EMT SLEEVE WITH INSULATED THROAT BUSHING AT EACH END, STUBBED WITH 4 INCHES FROM FACE OF WALL, AT ELEVATION APPROXIMATELY 6 INCHES ABOVE ACCESSIBLE CEILING. INSTALL SLEEVE IN AN ACCESSIBLE LOCATION AS DEFINED IN CALIFORNIA ELECTRICAL CODE ARTICLE 100 DEFINITIONS. PROVIDE FIRE STOPPING UNDER WORK OF SECTION 27 41 08, BOND TO GROUND, COMPLY WITH DIVISION 26 AND SECTION 27 41 01 GROUNDING.

R12 ACCESSIBLE CEILING IS A T-BAR OR SIMILAR GRID BASED, PANELIZED REMOVEABLE CEILING MEETING THE DEFINITION FOR ACCESSIBLE WIRING METHODS IN ARTICLE 100 OF THE CALIFORNIA ELECTRICAL CODE.

**KEYNOTES**

- TN COMMUNICATIONS SYSTEMS, WORK OF DIVISION 27.
- (TNT) (E) WALL-MOUNTED DISPLAY AND AUDIOVISUAL EQUIPMENT TO REMAIN.
- (TNZ) (E) WALL-MOUNTED LOUSPEAKER AND SPEAKER WIRE TO BE REMOVED. REUSE BACKBOX AND PATHWAY. COORDINATE DISPOSITION/DISPOSAL WITH OWNER REPRESENTATIVE.
- (TNS) (E) PORTABLE LOUSPEAKER TO BE REMOVED. COORDINATE DISPOSITION/DISPOSAL WITH OWNER REPRESENTATIVE.
- (TNM) (E) IPTZ CAMERA AND CABLING TO BE REMOVED. REUSE BACKBOX, PATHWAY AND MOUNT. COORDINATE DISPOSITION/DISPOSAL WITH OWNER REPRESENTATIVE.
- (TNE) (E) FLAT PANEL DISPLAY AND ASSOCIATED CABLES TO BE REMOVED. REUSE MOUNT TO BE REMOVED. COORDINATE DISPOSITION/DISPOSAL WITH OWNER REPRESENTATIVE.
- (TNS) (E) TRUSS-MOUNTED LOUSPEAKER TO BE REMOVED. REUSE BACKBOX/PATHWAY/MOUNT. COORDINATE DISPOSITION/DISPOSAL WITH OWNER REPRESENTATIVE.



**1 THIRD FLOOR (EAST) OVERALL DEMO PLAN**  
3/22/14



**PITTSBURG CITY HALL COUNCIL  
CHAMBERS  
AUDIOVISUAL UPGRADES**

PITTSBURG, CA



REVISIONS	DATE	BY	DESCRIPTION

PROJECT NO:  
DRAWN BY:  
DRAWING SCALE:

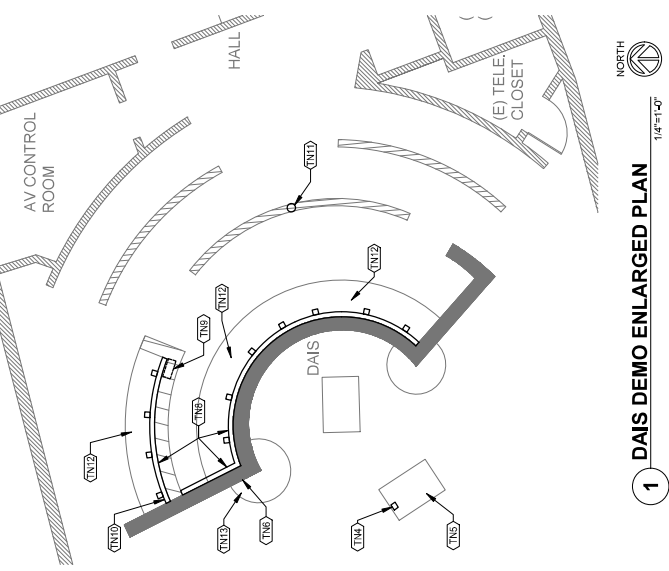
BID DOCUMENTS  
SEPTEMBER 29, 2022  
SHEET TITLE:

THIRD FLOOR (EAST)  
OVERALL DEMO PLAN

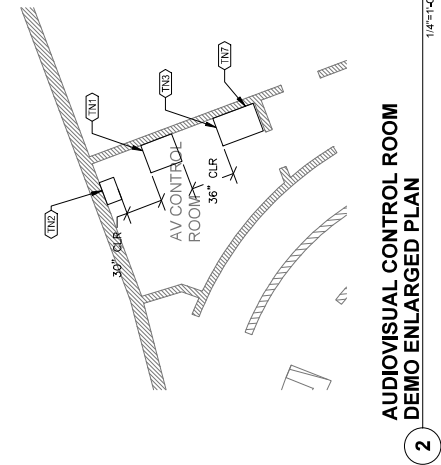
SHEET NUMBER:  
TA1.1

**KEYNOTES**

- TN COMMUNICATIONS SYSTEMS: WORK OF DIVISION 27.
- (NT1) (E) WALL-MOUNT RADIO RACK TO REMAIN (N.I.C.)
- (NT2) (E) FULL-HEIGHT AV RACK TO REMAIN. SEE TAZ.4 FOR DISPOSITION OF (E) EQUIPMENT.
- (NT3) (E) WORK SURFACE TO REMAIN.
- (NT4) (E) AV PA/DATA POKE-THRU TO REMAIN. PROTECT IN PLACE. REMOVE UNUSED AUDIOVISUAL CABLING.
- (NT5) (E) REPOSITIONABLE LECTERN AND ASSOCIATED CABLING TO BE REMOVED. COORDINATE DISPOSITION/DISPOSAL WITH OWNER REPRESENTATIVE.
- (NT6) (E) I/G MEDIA PORT. REMOVE RECEIVER/BLU AND CABLING. PROTECT BACKBOX IN PLACE.
- (NT7) (E) TABLETOP (E) CAMERA CONTROLLERS AND ASSOCIATED CABLING TO BE REMOVED. COORDINATE DISPOSITION/DISPOSAL WITH OWNER REPRESENTATIVE. (E) MONITORS AND KEYBOARD TO REMAIN.
- (NT8) (E) AMX CONTROL PORTS. SURFACE RACEWAY, AMX CONTROL BOX, HDMI SPLITTERS AND ASSOCIATED CABLING TO BE REMOVED. COORDINATE DISPOSITION/DISPOSAL WITH OWNER REPRESENTATIVE. PATCH AND REPAIR WALLS AS REQUIRED.
- (NT9) (E) 12/18 RECESSED PULLBOX TO REMAIN. REMOVE ALL UNUSED LOW-VOLTAGE CABLING.
- (NT10) (E) CASSETTE RECORDER AND ASSOCIATED CABLING TO BE REMOVED. COORDINATE DISPOSITION/DISPOSAL W/ OWNER REPRESENTATIVE.
- (NT11) (E) PTZ CAMERA AND ASSOCIATED CABLING TO BE REMOVED. COORDINATE DISPOSITION/DISPOSAL W/ OWNER REPRESENTATIVE.
- (NT12) (E) GOOSENECK MICROPHONES AND ASSOCIATED CABLING TO BE REMOVED. COORDINATE DISPOSITION/DISPOSAL W/ OWNER REPRESENTATIVE.
- (NT13) (E) ASSISTIVE LISTENING SIGN TO REMAIN.



**1 DAIS DEMO ENLARGED PLAN**  
1/4"=1'-0"



**2 AUDIOVISUAL CONTROL ROOM DEMO ENLARGED PLAN**  
1/4"=1'-0"

**Smith & Peters**  
**Architectural**  
**McDonald Inc.**  
**PLS**  
Communication Engineering Group  
10000 Wilshire Blvd, Suite 1400  
Los Angeles, California 90024  
(310) 250-5918 [www.spsmc.com](http://www.spsmc.com)

**PITTSBURG CITY HALL COUNCIL CHAMBERS**  
**AUDIOVISUAL UPGRADES**  
PITTSBURG, CA

REVISIONS

NO.	DESCRIPTION	DATE

BID DOCUMENTS  
SEPTEMBER 29, 2022  
SHEET TITLE

AUDIOVISUAL  
DAIS DEMO AND CONTROL  
ROOM ENLARGED PLANS

SHEET NUMBER

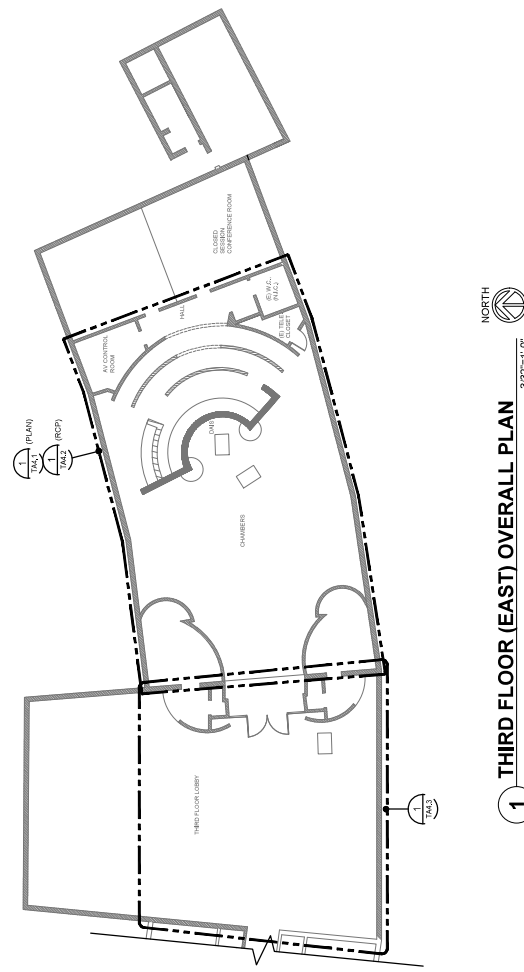
TA1.2

REVISIONS									

PROJECT NO.:  
 DRAWN BY:  
 DRAWING SCALE:  
 BID DOCUMENTS  
 SEPTEMBER 28, 2022  
 SHEET TITLE:

THIRD FLOOR (EAST)  
 OVERALL PLAN

SHEET NUMBER:  
 TA2.1



3/32"=1'-0"

**1 THIRD FLOOR (EAST) OVERALL PLAN**





**KEYNOTES**

- TN COMMUNICATIONS SYSTEMS: WORK OF DIVISION 27.
- (IN) OVERHEAD DISPLAY. SECURE TO (E) HANGERS. BOTTOM OF DISPLAY AT MIN. +80' A.F.F. U.O.N. TYP.
- (IN) PTZ CAMERA AT EXISTING LOCATION. REUSE (E) PATHWAY.
- (IN) H.R. TO RACK R33. AV CONTROL ROOM.
- (IN) PTZ CAMERA AT FACE OF (E) GYP. SOFFIT. SEE HYDAS.
- (IN) PAINT ALL EXPOSED METAL CONDUIT AND ENCLOSURES TO MATCH ADJACENT SURFACES. OBTAIN SAMPLE FOR REVIEW AND ACCEPTANCE BY OWNER PRIOR TO PAINTING.



1/4" = 1'-0"

1 ENLARGED RCP

**PITTSBURG CITY HALL COUNCIL CHAMBERS AUDIOVISUAL UPGRADES**  
 PITTSBURG, CA



REVISIONS						

PROJECT NO.:  
 DRAWN BY:  
 DRAWING SCALE:

BID DOCUMENTS  
 SEPTEMBER 29, 2022  
 SHEET TITLE:

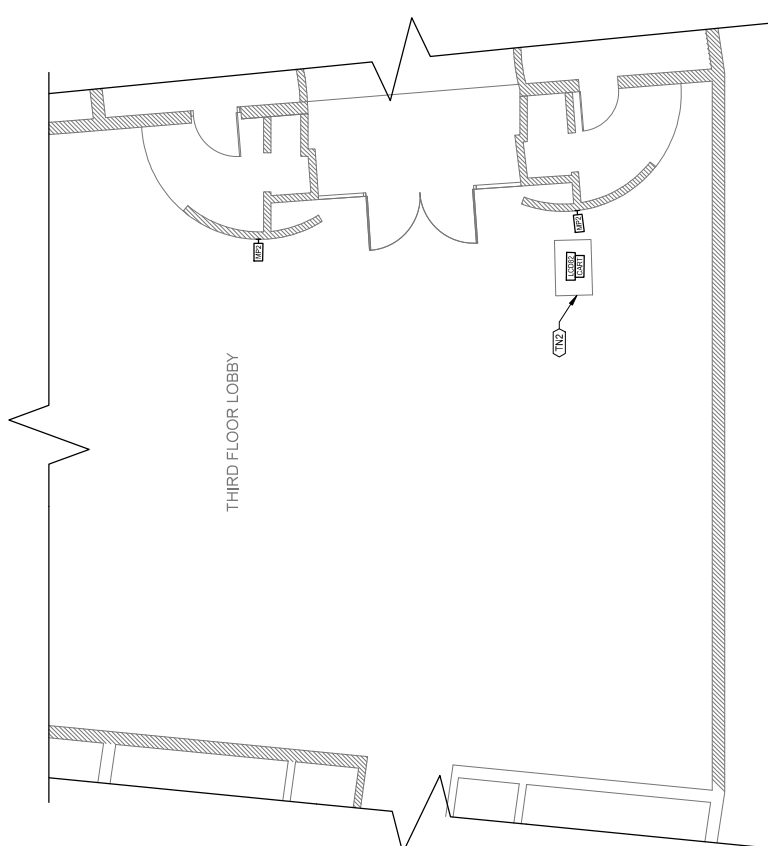
ENLARGED RCP

SHEET NUMBER:  
 TA4.2

- KEYNOTES**
- TN COMMUNICATIONS SYSTEMS- WORK OF DIVISION 27.
  - (TN1) H.R. TO RACK R33 IN AV CONTROL ROOM.
  - (TN2) REPOSITIONABLE FLAT PANEL DISPLAY/CART.
  - (TN3) (N) WALL-MOUNTED LOUDSPEAKER, REUSE EXISTING BACKBOX AND PATHWAY, TYP.
  - (TN4) PAINT ALL EXPOSED METAL CONDUIT AND ENCLOSURES TO MATCH ADJACENT ASSEMBLY/STRUCTURE. SUBMIT PAINT SAMPLE FOR APPROVAL AND ACCEPTANCE BY OWNER PRIOR TO PAINTING.

## THIRD FLOOR LOBBY ENLARGED PLAN

NORTH  
1/4"=1'-0"



**1 THIRD FLOOR LOBBY ENLARGED PLAN**  
1/4"=1'-0"

**PITTSBURG CITY HALL COUNCIL  
CHAMBERS  
AUDIOVISUAL UPGRADES**

PITTSBURG, CA

**Smith, Jensen & McDonald Inc.**  
COMMUNICATIONS ENGINEERING GROUP  
301 FRENCH CANYON BLVD.  
PITTSBURG, CA 95620  
(916) 250-3100 www.sjm.com

**REVISIONS**


**PROJECT NO.:**  
**DRAWN BY:**  
**DRAWING SCALE:**

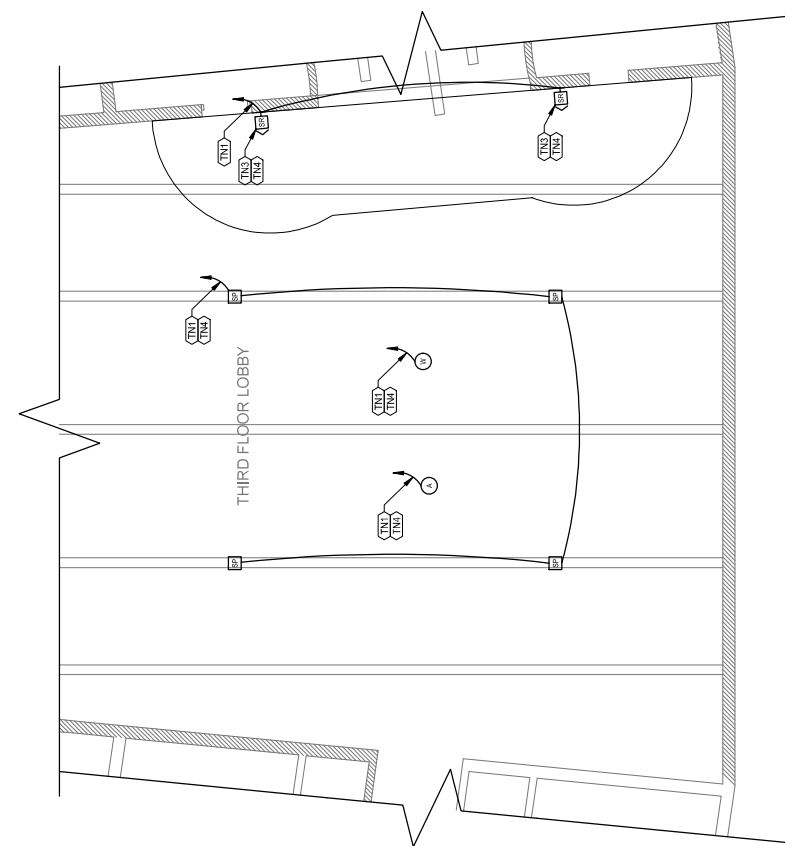
**BID DOCUMENTS**  
SEPTEMBER 29, 2022  
SHEET TITLE

**THIRD FLOOR LOBBY  
ENLARGED PLAN & RCP**

**SHEET NUMBER:**

TA4.3

**2 THIRD FLOOR LOBBY ENLARGED RCP**  
1/4"=1'-0"



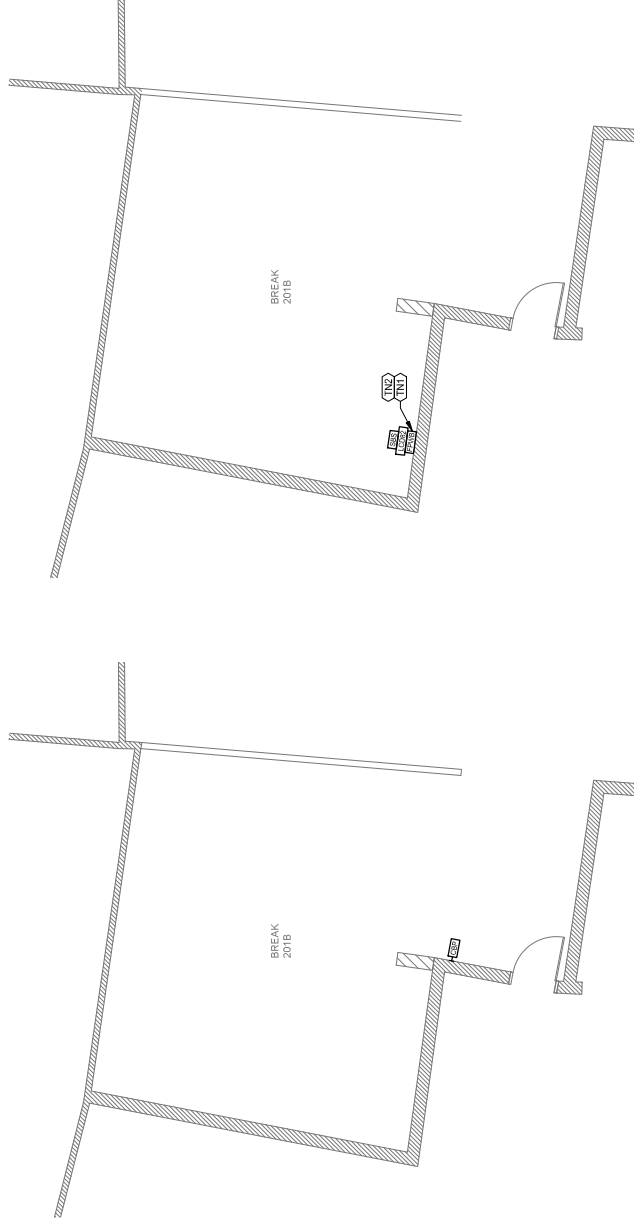


**KEYNOTES**

TN COMMUNICATIONS SYSTEMS: WORK OF DIMENSION 2".

(TND) +120' A.F.F. TO CL OF FPWB AND DISPLAY.

(TNZ) PAINT ALL EXPOSED METAL CONDUIT AND ENCLOSURES TO MATCH ADJACENT ASSEMBLY/STRUCTURE. SUBMIT PAINT SAMPLE TO OWNER AND ACCEPTANCE BY OWNER PRIOR TO PAINTING.



1 SECOND FLOOR BREAK ROOM ENLARGED PLAN 1/8"=1'-0"

2 SECOND FLOOR BREAK ROOM ENLARGED RCP 1/8"=1'-0"

**PITTSBURG CITY HALL COUNCIL  
 CHAMBERS  
 AUDIOVISUAL UPGRADES**  
 PITTSBURG, CA



REVISIONS			

PROJECT NO:  
 DRAWN BY:  
 DRAWING SCALE:

BID DOCUMENTS  
 SEPTEMBER 29, 2022  
 SHEET TITLE

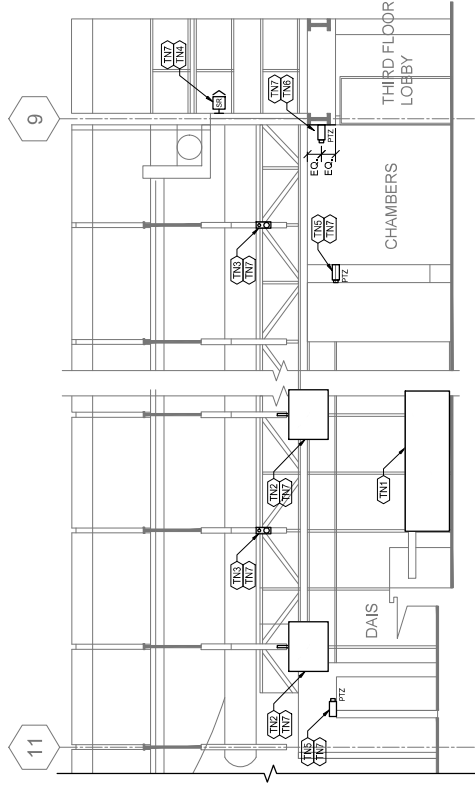
SECOND FLOOR  
 BREAK ROOM ENLARGED  
 PLAN AND RCP

SHEET NUMBER

TA445

**KEYNOTES**

- TN COMMUNICATIONS SYSTEMS: WORK OF DIVISION 27.
- (INT) (E) REPOSITIONABLE STAFF TABLES. SEE DEVICE PLAN.
- (INT) (N) DISPLAY. REUSE (E) POLE-MOUNT AT TRUSS. SEE DEVICE RCP.
- (INT) (N) POLE/TRUSS MOUNTED LOUDSPEAKER. SEE DEVICE RCP.
- (INT) (N) WALL-MOUNTED LOUDSPEAKER AT (E) LOCATION. REUSE (E) PATHWAY.
- (INT) (N) PTZ CAMERA AT (E) LOCATION. REUSE (E) PATHWAY.
- (INT) (N) PTZ CAMERA AT GYP. SOFT-OVER ENTRY. TYP. FOR (2) LOCATIONS.
- (INT) (N) PAINT ALL EXPOSED METAL CONDUIT AND ENCLOSURES TO MATCH ADJACENT ASSEMBLY/STRUCTURE. SUBMIT PAINT SAMPLE FOR REVIEW AND ACCEPTANCE BY OWNER PRIOR TO PAINTING.



**1 CHAMBERS INTERIOR ELEVATION - SOUTH**  
1/4"=1'-0"

REVISIONS	DATE	DESCRIPTION

PROJECT NO:  
DRAWN BY:  
DRAWING SCALE:

BID DOCUMENTS  
SEPTEMBER 29, 2022  
SHEET TITLE

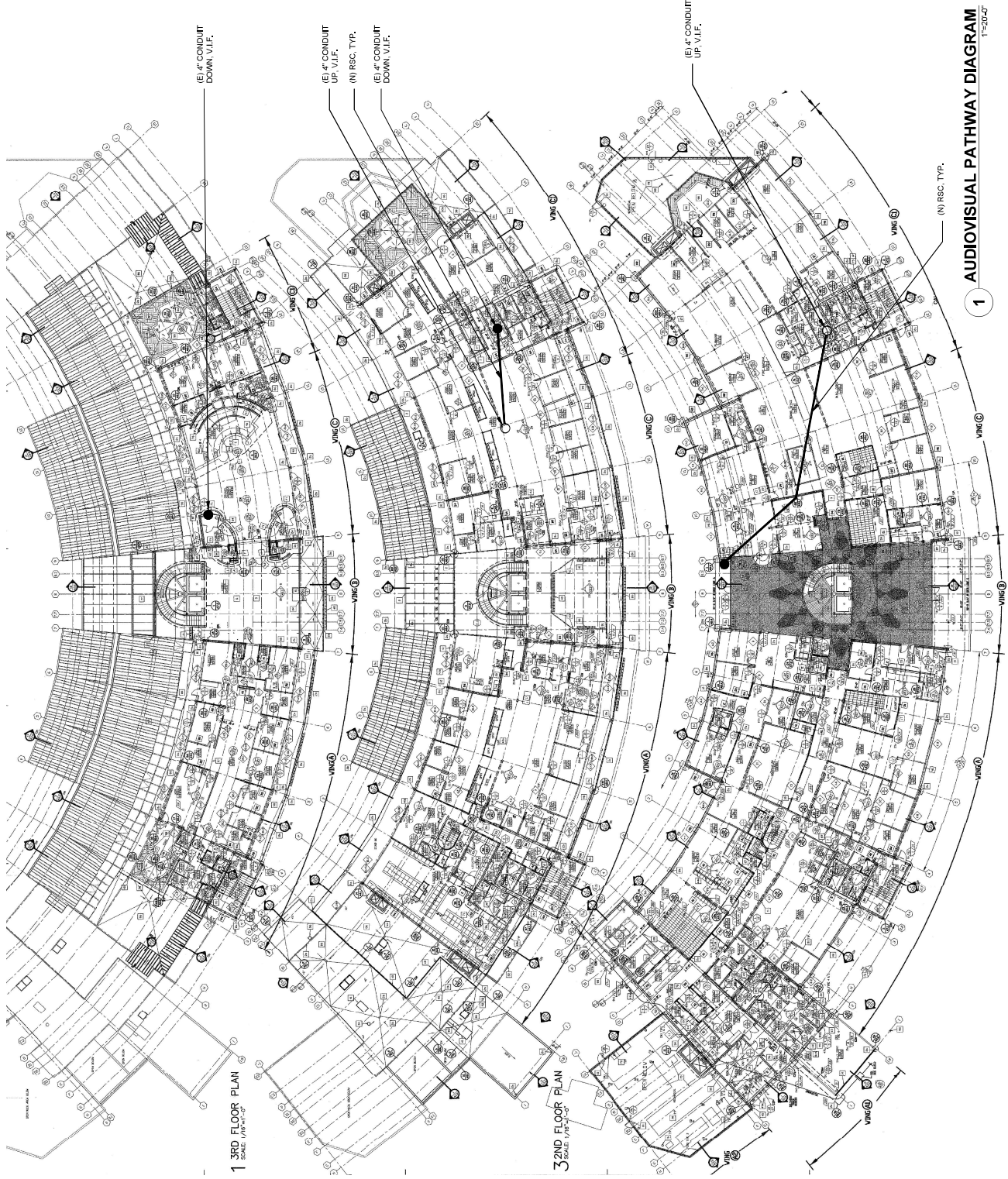
CHAMBERS INTERIOR  
ELEVATIONS

SHEET NUMBER

TA4.6







**1 AUDIOVISUAL PATHWAY DIAGRAM**  
 1-2022

© 2022 Smith, Snieszko & Associates Inc. All rights reserved. 9-20-22 1-2022 TA7.0B



**PITTSBURG CITY HALL COUNCIL CHAMBERS AUDIOVISUAL UPGRADES**  
PITTSBURG, CA

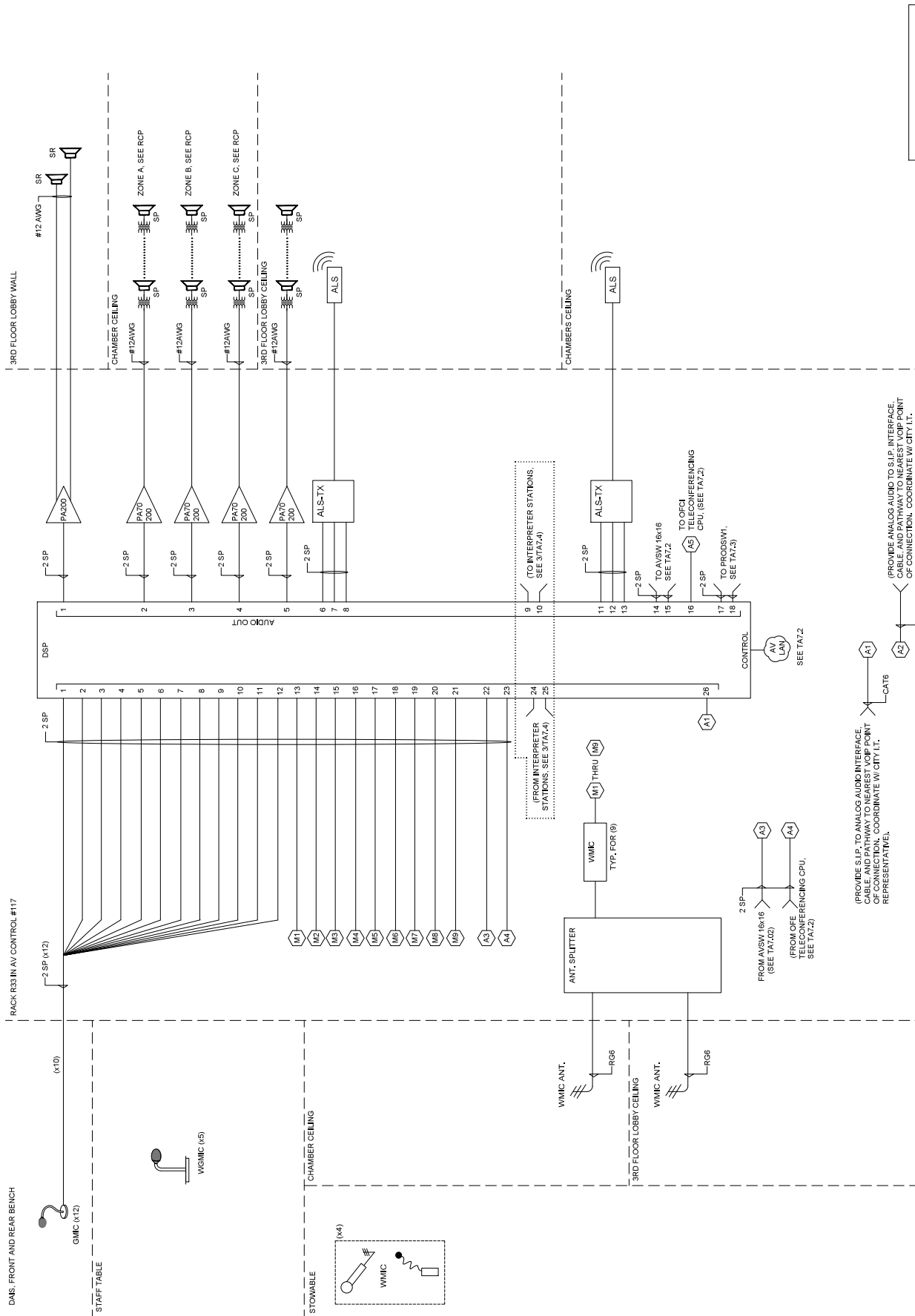


REVISIONS	DATE	BY	DESCRIPTION

PROJECT NO.:  
DRAWING NO.:  
DRAWING SCALE:  
BID DOCUMENTS  
SEPTEMBER 29, 2022  
SHEET TITLE

COUNCIL CHAMBER AUDIO  
FUNCTIONAL DIAGRAM

SHEET NUMBER  
TA7.1



REFER TO BOLD DASHED  
AREA ABOVE FOR  
ADDITIVE BID A.L.T. #1

**1 COUNCIL CHAMBERS AUDIO  
FUNCTIONAL DIAGRAM**

NTS



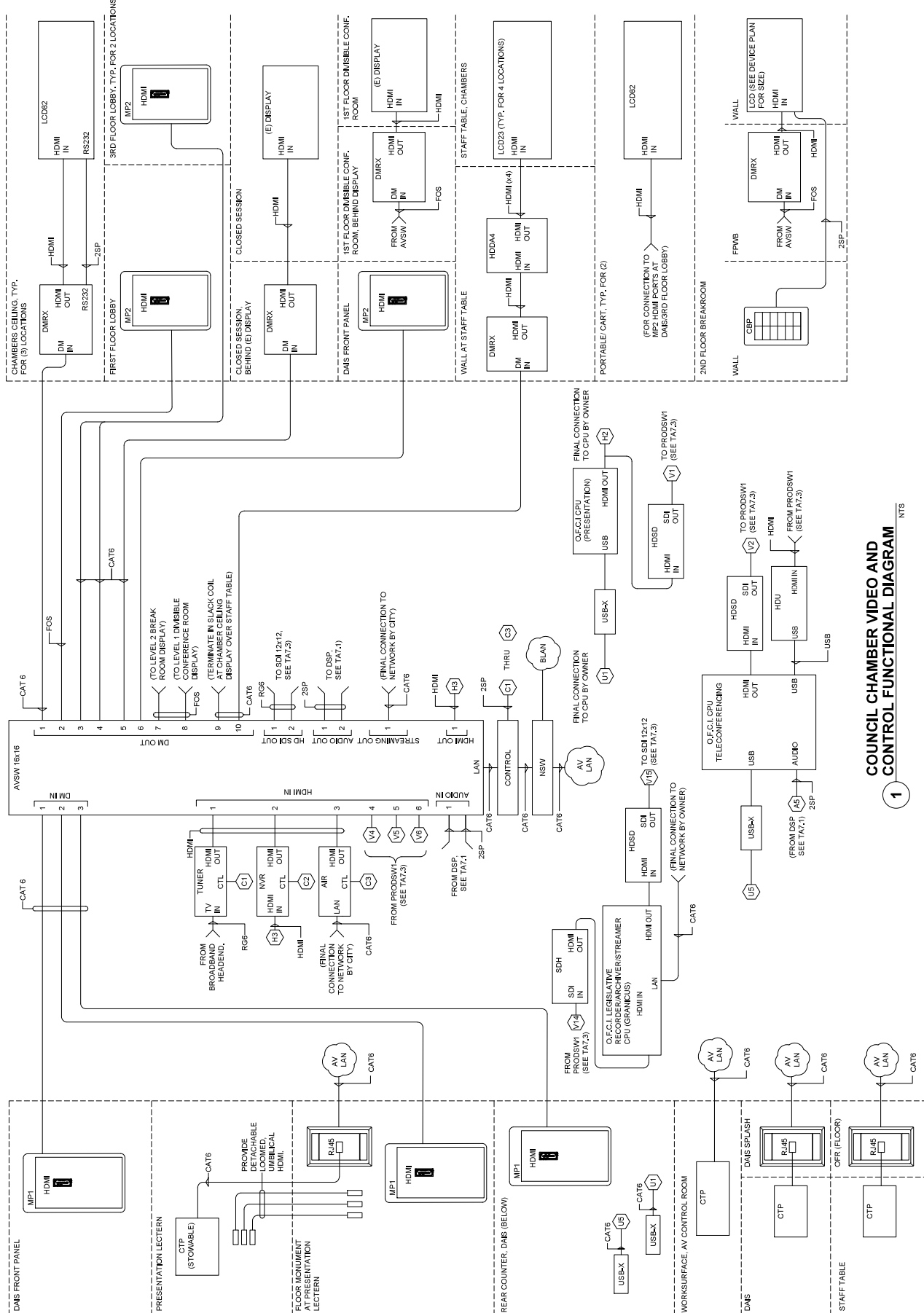
# PITTSBURG CITY HALL COUNCIL CHAMBERS AUDIOVISUAL UPGRADES

PITTSBURG, CA

REVISIONS

PROJECT NO.:  
DRAWING SCALE:  
BID DOCUMENTS  
SEPTEMBER 28, 2022  
SHEET TITLE:  
COUNCIL CHAMBER VIDEO AND CONTROL FUNCTIONAL DIAGRAM

SHEET NUMBER:  
TAT.2



## 1 COUNCIL CHAMBER VIDEO AND CONTROL FUNCTIONAL DIAGRAM

REVISIONS																			

BID DOCUMENTS  
 SEPTEMBER 29, 2022  
 SHEET TITLE

COUNCIL CHAMBER  
 PRODUCTION FUNCTIONAL  
 DIAGRAM

SHEET NUMBER  
 TA7.3

**KEYNOTES**

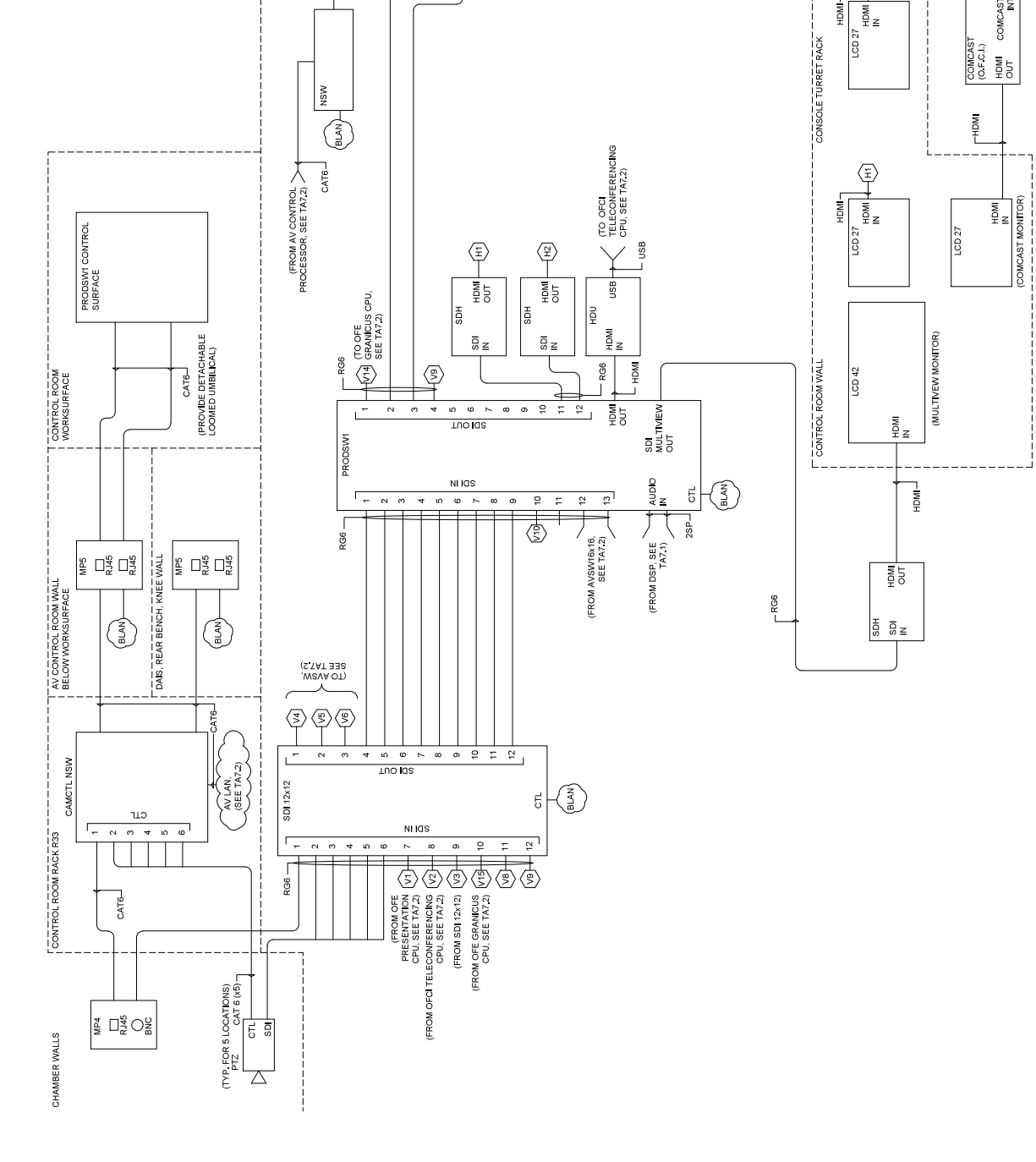
TKN COMMUNICATIONS SYSTEMS: CONFORM WITH DIVISION 27 AND 28.

TKX1 OUTPUTS RESERVED FOR CARRIER BACKHAUL EQUIPMENT, N.I.C.

TKX2 PRIVATE VLAN COORDINATE CONFIGURATION AND FINAL CONNECTION TO CITY NETWORK WITH CITY IT REPRESENTATIVE.

TKX3 CONNECTION TO CARRIER FURNISHED EQUIPMENT. COORDINATE CONFIGURATION AND FINAL CONNECTION TO CARRIER EQUIPMENT WITH CITY IT REPRESENTATIVE & CARRIER.

TKX4 CONNECTION TO COMCAST BROADBAND HEADEND AT COMCAST MPOE. COORDINATE CONFIGURATION AND FINAL CONNECTION TO CARRIER EQUIPMENT WITH CITY IT REPRESENTATIVE & CARRIER.



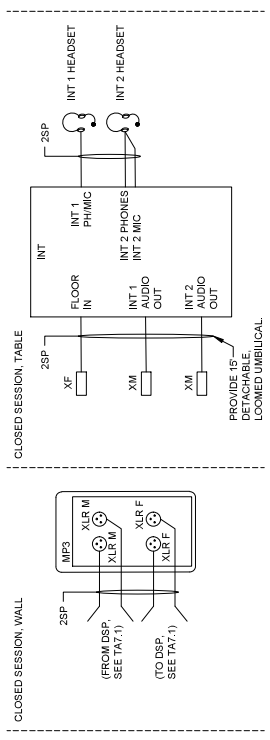
**1 COUNCIL CHAMBER PRODUCTION FUNCTIONAL DIAGRAM** NTS

1	(E) BLANK
2	(E) BLANK
3	(E) BLANK
4	(E) BLANK
5	(E) BLANK
6	(E) BLANK
7	(E) BLANK
8	(E) BLANK
9	(E) BLANK
10	(E) BLANK
11	(E) BLANK
12	(E) BLANK
13	(E) BLANK
14	(E) BLANK
15	(E) BLANK
16	(E) BLANK
17	(E) BLANK
18	(E) BLANK
19	(E) BLANK
20	(E) BLANK
21	(E) BLANK
22	(E) BLANK
23	(E) BLANK
24	(E) BLANK
25	(E) BLANK
26	(E) BLANK
27	(E) BLANK
28	(E) BLANK
29	(E) BLANK
30	(E) BLANK
31	(E) BLANK
32	(E) BLANK
33	(E) BLANK
34	(E) BLANK
35	(E) BLANK
36	(E) BLANK
37	(E) BLANK
38	(E) BLANK
39	(E) BLANK
40	(E) BLANK
41	(E) BLANK
42	(E) BLANK
43	(E) BLANK
44	(E) BLANK
45	(E) BLANK
46	(E) BLANK
47	(E) BLANK
48	(E) BLANK
49	(E) BLANK
50	(E) BLANK
51	(E) BLANK
52	(E) BLANK
53	(E) BLANK
54	(E) BLANK
55	(E) BLANK
56	(E) BLANK
57	(E) BLANK
58	(E) BLANK
59	(E) BLANK
60	(E) BLANK
61	(E) BLANK
62	(E) BLANK
63	(E) BLANK
64	(E) BLANK
65	(E) BLANK
66	(E) BLANK
67	(E) BLANK
68	(E) BLANK
69	(E) BLANK
70	(E) BLANK
71	(E) BLANK
72	(E) BLANK
73	(E) BLANK
74	(E) BLANK
75	(E) BLANK
76	(E) BLANK
77	(E) BLANK
78	(E) BLANK
79	(E) BLANK
80	(E) BLANK
81	(E) BLANK
82	(E) BLANK
83	(E) BLANK
84	(E) BLANK
85	(E) BLANK
86	(E) BLANK
87	(E) BLANK
88	(E) BLANK
89	(E) BLANK
90	(E) BLANK
91	(E) BLANK
92	(E) BLANK
93	(E) BLANK
94	(E) BLANK
95	(E) BLANK
96	(E) BLANK
97	(E) BLANK
98	(E) BLANK
99	(E) BLANK
100	(E) BLANK

1 (E) AV RACK - EXISTING EQUIPMENT TO BE REMOVED  
1/12/21-1/4/21



2 COUNCIL CHAMBER SPEAKER TIMING SYSTEM FUNCTIONAL DIAGRAM  
NTS



3 INTERPRETATION STATION FUNCTIONAL DIAGRAM  
NTS



